

**TPGS2 Antibody (Center)**  
**Affinity Purified Rabbit Polyclonal Antibody (Pab)**  
**Catalog # AP10530c**

**Specification**

---

**TPGS2 Antibody (Center) - Product Information**

Application	WB, IHC-P,E
Primary Accession	<a href="#">Q68CL5</a>
Other Accession	<a href="#">NP_056291.2</a>
Reactivity	Human
Host	Rabbit
Clonality	Polyclonal
Isotype	Rabbit IgG
Calculated MW	33318
Antigen Region	109-137

**TPGS2 Antibody (Center) - Additional Information**

**Gene ID** 25941

**Other Names**

Tubulin polyglutamylase complex subunit 2, PGs2, TPGS2, C18orf10

**Target/Specificity**

This TPGS2 antibody is generated from rabbits immunized with a KLH conjugated synthetic peptide between 109-137 amino acids from the Central region of human TPGS2.

**Dilution**

WB~~1:1000

IHC-P~~1:50~100

**Format**

Purified polyclonal antibody supplied in PBS with 0.09% (W/V) sodium azide. This antibody is purified through a protein A column, followed by peptide affinity purification.

**Storage**

Maintain refrigerated at 2-8°C for up to 2 weeks. For long term storage store at -20°C in small aliquots to prevent freeze-thaw cycles.

**Precautions**

TPGS2 Antibody (Center) is for research use only and not for use in diagnostic or therapeutic procedures.

**TPGS2 Antibody (Center) - Protein Information**

**Name** TPGS2

**Synonyms** C18orf10

**Function** Subunit of the tubulin polyglutamylase complex (TPGC). The complex mediates cilia and flagella polyglutamylation which is essential for their biogenesis and motility.

**Cellular Location**

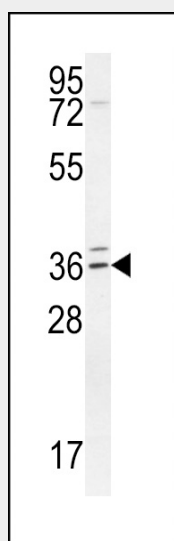
Cytoplasm, cytoskeleton. Cytoplasm, cytoskeleton, microtubule organizing center, centrosome, centriolar satellite. Note=Associated with microtubules

**TPGS2 Antibody (Center) - Protocols**

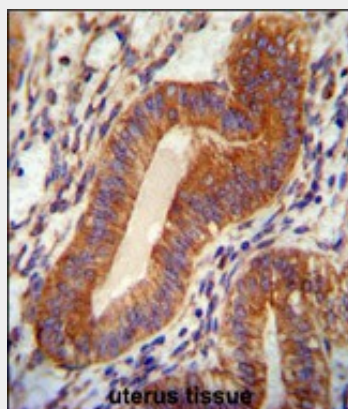
Provided below are standard protocols that you may find useful for product applications.

- [Western Blot](#)
- [Blocking Peptides](#)
- [Dot Blot](#)
- [Immunohistochemistry](#)
- [Immunofluorescence](#)
- [Immunoprecipitation](#)
- [Flow Cytometry](#)
- [Cell Culture](#)

**TPGS2 Antibody (Center) - Images**



TPGS2 Antibody (Center) (Cat. #AP10530c) western blot analysis in Jurkat cell line lysates (35ug/lane). This demonstrates the TPGS2 antibody detected the TPGS2 protein (arrow).



TPGS2 antibody (Center) (Cat. #AP10530c) immunohistochemistry analysis in formalin fixed and paraffin embedded human uterus tissue followed by peroxidase conjugation of the secondary antibody and DAB staining. This data demonstrates the use of the TPGS2 antibody (Center) for immunohistochemistry. Clinical relevance has not been evaluated.

**TPGS2 Antibody (Center) - Background**

The function of C18orf10 remains unknown.

**TPGS2 Antibody (Center) - References**

Petroziello, J., et al. Oncogene 23(46):7734-7745(2004)  
Yamada, S., et al. Oncogene 23(35):5901-5911(2004)