

**FSTL1 Antibody (C-term)**  
**Affinity Purified Rabbit Polyclonal Antibody (Pab)**  
**Catalog # AP10534b**

**Specification**

---

**FSTL1 Antibody (C-term) - Product Information**

Application	FC, WB, IHC-P,E
Primary Accession	<a href="#">O12841</a>
Other Accession	<a href="#">O9GKY0</a> , <a href="#">NP_009016.1</a>
Reactivity	Human, Mouse, Rat
Predicted	Monkey
Host	Rabbit
Clonality	Polyclonal
Isotype	Rabbit IgG
Calculated MW	34986
Antigen Region	280-308

**FSTL1 Antibody (C-term) - Additional Information**

**Gene ID** 11167

**Other Names**

Follistatin-related protein 1, Follistatin-like protein 1, FSTL1, FRP

**Target/Specificity**

This FSTL1 antibody is generated from rabbits immunized with a KLH conjugated synthetic peptide between 280-308 amino acids from the C-terminal region of human FSTL1.

**Dilution**

FC~~1:10~50

WB~~1:1000

IHC-P~~1:50~100

E~~Use at an assay dependent concentration.

**Format**

Purified polyclonal antibody supplied in PBS with 0.09% (W/V) sodium azide. This antibody is purified through a protein A column, followed by peptide affinity purification.

**Storage**

Maintain refrigerated at 2-8°C for up to 2 weeks. For long term storage store at -20°C in small aliquots to prevent freeze-thaw cycles.

**Precautions**

FSTL1 Antibody (C-term) is for research use only and not for use in diagnostic or therapeutic procedures.

**FSTL1 Antibody (C-term) - Protein Information**

## Name FSTL1

## Synonyms FRP

**Function** Secreted glycoprotein that is involved in various physiological processes, such as angiogenesis, regulation of the immune response, cell proliferation and differentiation (PubMed:[22265692](#), PubMed:[29212066](#)). Plays a role in the development of the central nervous system, skeletal system, lungs, and ureter (By similarity). Promotes endothelial cell survival, migration and differentiation into network structures in an AKT-dependent manner. Also promotes survival of cardiac myocytes (By similarity). Initiates various signaling cascades by activating different receptors on the cell surface such as DIP2A, TLR4 or BMP receptors (PubMed:[20054002](#), PubMed:[22265692](#)).

## Cellular Location

Secreted.

## Tissue Location

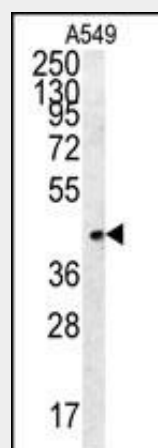
Overexpressed in synovial tissues from rheumatoid arthritis (PubMed:15638044).

## FSTL1 Antibody (C-term) - Protocols

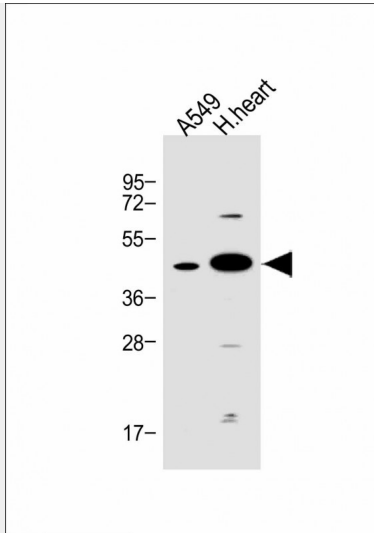
Provided below are standard protocols that you may find useful for product applications.

- [Western Blot](#)
- [Blocking Peptides](#)
- [Dot Blot](#)
- [Immunohistochemistry](#)
- [Immunofluorescence](#)
- [Immunoprecipitation](#)
- [Flow Cytometry](#)
- [Cell Culture](#)

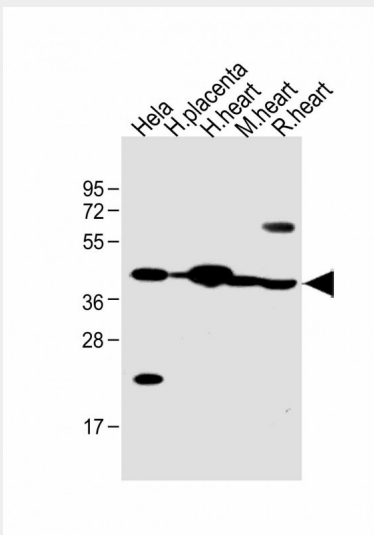
## FSTL1 Antibody (C-term) - Images



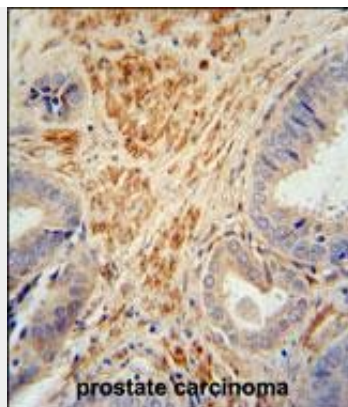
FSTL1 Antibody (C-term) (Cat. #AP10534b) western blot analysis in A549 cell line lysates (35ug/lane). This demonstrates the FSTL1 antibody detected the FSTL1 protein (arrow).



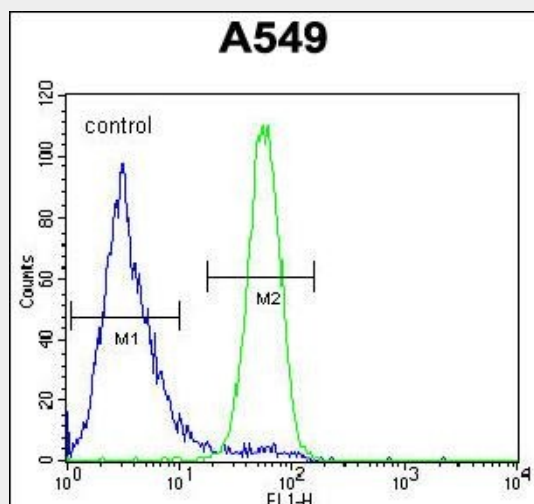
All lanes : Anti-FSTL1 Antibody (C-term) at 1:1000 dilution Lane 1: A549 whole cell lysate Lane 2: human heart lysate Lysates/proteins at 20 µg per lane. Secondary Goat Anti-Rabbit IgG, (H+L), Peroxidase conjugated at 1/10000 dilution. Predicted band size : 35 kDa Blocking/Dilution buffer: 5% NFDm/TBST.



All lanes : Anti-FSTL1 Antibody (C-term) at 1:1000 dilution Lane 1: HeLa whole cell lysate Lane 2: human placenta lysate Lane 3: human heart lysate Lane 4: mouse heart lysate Lane 5: rat heart lysate Lysates/proteins at 20 µg per lane. Secondary Goat Anti-Rabbit IgG, (H+L), Peroxidase conjugated at 1/10000 dilution. Predicted band size : 35 kDa Blocking/Dilution buffer: 5% NFDm/TBST.



FSTL1 antibody (C-term) (Cat. #AP10534b) immunohistochemistry analysis in formalin fixed and paraffin embedded human prostate carcinoma followed by peroxidase conjugation of the secondary antibody and DAB staining. This data demonstrates the use of the FSTL1 antibody (C-term) for immunohistochemistry. Clinical relevance has not been evaluated.



FSTL1 Antibody (C-term) (Cat. #AP10534b) flow cytometric analysis of A549 cells (right histogram) compared to a negative control cell (left histogram). FITC-conjugated goat-anti-rabbit secondary antibodies were used for the analysis.

#### **FSTL1 Antibody (C-term) - References**

Kai, N., et al. Brain Res. 1073-1074, 60-70 (2006) :  
Venter, J.C., et al. Science 291(5507):1304-1351(2001)

#### **FSTL1 Antibody (C-term) - Citations**

- [Determination of follistatin-like protein 1 expression in colorectal cancer and its association with clinical outcomes](#)
- [Follistatin-like protein 1 plays a tumor suppressor role in clear-cell renal cell carcinoma.](#)
- [A genetic polymorphism affects the risk and prognosis of renal cell carcinoma: association with follistatin-like protein 1 expression.](#)