

**LY6G6C Antibody (C-term)**  
**Affinity Purified Rabbit Polyclonal Antibody (Pab)**  
**Catalog # AP10539b****Specification**

---

**LY6G6C Antibody (C-term) - Product Information**

Application	IHC-P, WB,E
Primary Accession	<a href="#">O95867</a>
Other Accession	<a href="#">NP_079537.1</a>
Reactivity	Human
Host	Rabbit
Clonality	Polyclonal
Isotype	Rabbit IgG
Calculated MW	13821
Antigen Region	62-90

**LY6G6C Antibody (C-term) - Additional Information****Gene ID** 80740**Other Names**

Lymphocyte antigen 6 complex locus protein G6c, LY6G6C, C6orf24, G6C, NG24

**Target/Specificity**

This LY6G6C antibody is generated from rabbits immunized with a KLH conjugated synthetic peptide between 62-90 amino acids from the C-terminal region of human LY6G6C.

**Dilution**

IHC-P~~1:50~100

WB~~1:1000

E~~Use at an assay dependent concentration.

**Format**

Purified polyclonal antibody supplied in PBS with 0.09% (W/V) sodium azide. This antibody is purified through a protein A column, followed by peptide affinity purification.

**Storage**

Maintain refrigerated at 2-8°C for up to 2 weeks. For long term storage store at -20°C in small aliquots to prevent freeze-thaw cycles.

**Precautions**

LY6G6C Antibody (C-term) is for research use only and not for use in diagnostic or therapeutic procedures.

**LY6G6C Antibody (C-term) - Protein Information****Name** LY6G6C

**Synonyms** C6orf24, G6C, NG24

**Cellular Location**

Cell membrane; Lipid-anchor, GPI-anchor

**Tissue Location**

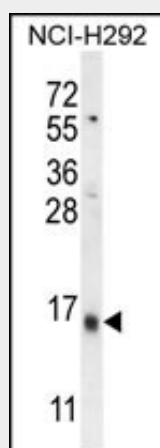
Highly expressed at the leading edges of cells, on filopodia.

**LY6G6C Antibody (C-term) - Protocols**

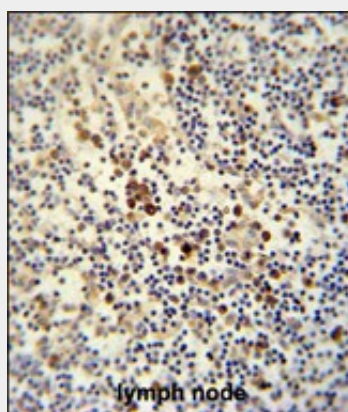
Provided below are standard protocols that you may find useful for product applications.

- [Western Blot](#)
- [Blocking Peptides](#)
- [Dot Blot](#)
- [Immunohistochemistry](#)
- [Immunofluorescence](#)
- [Immunoprecipitation](#)
- [Flow Cytometry](#)
- [Cell Culture](#)

**LY6G6C Antibody (C-term) - Images**



LY6G6C Antibody (C-term) (Cat. #AP10539b) western blot analysis in NCI-H292 cell line lysates (35ug/lane). This demonstrates the LY6G6C antibody detected the LY6G6C protein (arrow).



LY6G6C antibody (C-term) (Cat. #AP10539b) immunohistochemistry analysis in formalin fixed

and paraffin embedded human lymph node followed by peroxidase conjugation of the secondary antibody and DAB staining. This data demonstrates the use of the LY6G6C antibody (C-term) for immunohistochemistry. Clinical relevance has not been evaluated.

#### **LY6G6C Antibody (C-term) - Background**

LY6G6C belongs to a cluster of leukocyte antigen-6 (LY6) genes located in the major histocompatibility complex (MHC) class III region on chromosome 6. Members of the LY6 superfamily typically contain 70 to 80 amino acids, including 8 to 10 cysteines. Most LY6 proteins are attached to the cell surface by a glycosylphosphatidylinositol (GPI) anchor that is directly involved in signal transduction (Mallya et al., 2002 [PubMed 12079290]).

#### **LY6G6C Antibody (C-term) - References**

Bailey, S.D., et al. Diabetes Care (2010) In press :  
Talmud, P.J., et al. Am. J. Hum. Genet. 85(5):628-642(2009)  
Barcellos, L.F., et al. PLoS Genet. 5 (10), E1000696 (2009) :  
Xie, T., et al. Genome Res. 13(12):2621-2636(2003)  
Mallya, M., et al. Genomics 80(1):113-123(2002)