

SCARF2 Antibody (C-term)
Affinity Purified Rabbit Polyclonal Antibody (Pab)
Catalog # AP10542b**Specification**

SCARF2 Antibody (C-term) - Product Information

Application	FC, WB,E
Primary Accession	O96GP6
Other Accession	P59222 , NP_878315.1 , NP_699165.2
Reactivity	Human, Mouse
Host	Rabbit
Clonality	Polyclonal
Isotype	Rabbit IgG
Calculated MW	92384
Antigen Region	826-854

SCARF2 Antibody (C-term) - Additional Information**Gene ID** 91179**Other Names**

Scavenger receptor class F member 2, SRECRP-1, Scavenger receptor expressed by endothelial cells 2 protein, SREC-II, SCARF2, SREC2, SREPCR

Target/Specificity

This SCARF2 antibody is generated from rabbits immunized with a KLH conjugated synthetic peptide between 826-854 amino acids from the C-terminal region of human SCARF2.

Dilution

FC~~1:10~50

WB~~1:1000

E~~Use at an assay dependent concentration.

Format

Purified polyclonal antibody supplied in PBS with 0.09% (W/V) sodium azide. This antibody is purified through a protein A column, followed by peptide affinity purification.

Storage

Maintain refrigerated at 2-8°C for up to 2 weeks. For long term storage store at -20°C in small aliquots to prevent freeze-thaw cycles.

Precautions

SCARF2 Antibody (C-term) is for research use only and not for use in diagnostic or therapeutic procedures.

SCARF2 Antibody (C-term) - Protein Information**Name** SCARF2

Synonyms SREC2, SREPCR

Function Probable adhesion protein, which mediates homophilic and heterophilic interactions. In contrast to SCARF1, it poorly mediates the binding and degradation of acetylated low density lipoprotein (Ac- LDL) (By similarity).

Cellular Location

Membrane; Single-pass type I membrane protein

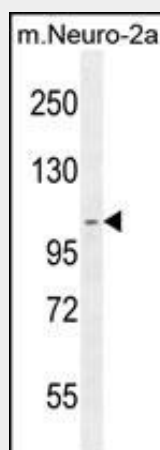
Tissue Location

Predominantly expressed in endothelial cells. Expressed in heart, placenta, lung, kidney, spleen, small intestine and ovary.

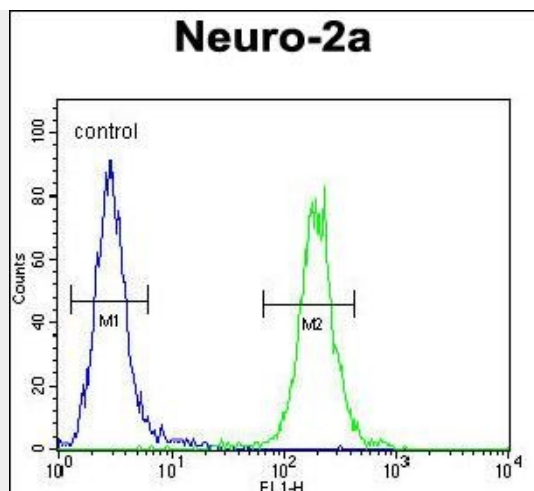
SCARF2 Antibody (C-term) - Protocols

Provided below are standard protocols that you may find useful for product applications.

- [Western Blot](#)
- [Blocking Peptides](#)
- [Dot Blot](#)
- [Immunohistochemistry](#)
- [Immunofluorescence](#)
- [Immunoprecipitation](#)
- [Flow Cytometry](#)
- [Cell Culture](#)

SCARF2 Antibody (C-term) - Images

SCARF2 Antibody (C-term) (Cat. #AP10542b) western blot analysis in mouse Neuro-2a cell line lysates (35ug/lane). This demonstrates the SCARF2 antibody detected the SCARF2 protein (arrow).



SCARF2 Antibody (C-term) (Cat. #AP10542b) flow cytometric analysis of Neuro-2a cells (right histogram) compared to a negative control cell (left histogram). FITC-conjugated goat-anti-rabbit secondary antibodies were used for the analysis.

SCARF2 Antibody (C-term) - Background

The protein encoded by this gene is similar to SCARF1/SREC-I, a scavenger receptor protein that mediates the binding and degradation of acetylated low density lipoprotein (Ac-LDL). This protein has only little activity of internalizing modified low density lipoproteins (LDL), but it can interact with SCARF1 through its extracellular domain. The association of this protein with SCARF1 is suppressed by the presence of scavenger ligands. Alternatively spliced transcript variants encoding distinct isoforms have been reported.

SCARF2 Antibody (C-term) - References

Anastasio, N., et al. Am. J. Hum. Genet. 87(4):553-559(2010)
Wu, C., et al. Proteomics 7(11):1775-1785(2007)
Ishii, J., et al. J. Biol. Chem. 277(42):39696-39702(2002)