

CCDC8 Antibody (C-term)
Affinity Purified Rabbit Polyclonal Antibody (Pab)
Catalog # AP10554b**Specification**

CCDC8 Antibody (C-term) - Product Information

Application	IHC-P, WB,E
Primary Accession	O9H0W5
Other Accession	NP_114429.2
Reactivity	Human
Host	Rabbit
Clonality	Polyclonal
Isotype	Rabbit IgG
Calculated MW	59374
Antigen Region	390-418

CCDC8 Antibody (C-term) - Additional Information**Gene ID** 83987**Other Names**

Coiled-coil domain-containing protein 8, CCDC8

Target/Specificity

This CCDC8 antibody is generated from rabbits immunized with a KLH conjugated synthetic peptide between 390-418 amino acids from the C-terminal region of human CCDC8.

Dilution

IHC-P~~1:50~100

WB~~1:1000

E~~Use at an assay dependent concentration.

Format

Purified polyclonal antibody supplied in PBS with 0.09% (W/V) sodium azide. This antibody is purified through a protein A column, followed by peptide affinity purification.

Storage

Maintain refrigerated at 2-8°C for up to 2 weeks. For long term storage store at -20°C in small aliquots to prevent freeze-thaw cycles.

Precautions

CCDC8 Antibody (C-term) is for research use only and not for use in diagnostic or therapeutic procedures.

CCDC8 Antibody (C-term) - Protein Information**Name** CCDC8

Function Core component of the 3M complex, a complex required to regulate microtubule dynamics and genome integrity. It is unclear how the 3M complex regulates microtubules, it could act by controlling the level of a microtubule stabilizer (PubMed:[24793695](#), PubMed:[24793696](#)). Required for localization of CUL7 to the centrosome (PubMed:[24793695](#)).

Cellular Location

Cytoplasm. Cytoplasm, cytoskeleton, microtubule organizing center, centrosome

Tissue Location

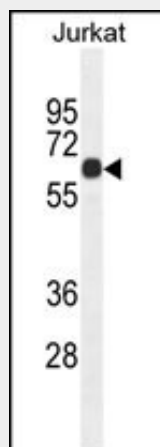
Widely expressed with low levels in spleen, skeletal muscle, small intestine, kidney and liver

CCDC8 Antibody (C-term) - Protocols

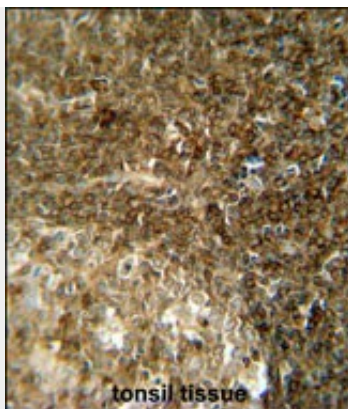
Provided below are standard protocols that you may find useful for product applications.

- [Western Blot](#)
- [Blocking Peptides](#)
- [Dot Blot](#)
- [Immunohistochemistry](#)
- [Immunofluorescence](#)
- [Immunoprecipitation](#)
- [Flow Cytometry](#)
- [Cell Culture](#)

CCDC8 Antibody (C-term) - Images



CCDC8 Antibody (C-term) (Cat. #AP10554b) western blot analysis in Jurkat cell line lysates (35ug/lane). This demonstrates the CCDC8 antibody detected the CCDC8 protein (arrow).



CCDC8 antibody (C-term) (Cat. #AP10554b) immunohistochemistry analysis in formalin fixed and paraffin embedded human tonsil tissue followed by peroxidase conjugation of the secondary antibody and DAB staining. This data demonstrates the use of the CCDC8 antibody (C-term) for immunohistochemistry. Clinical relevance has not been evaluated.

CCDC8 Antibody (C-term) - References

Simpson, J.C., et al. EMBO Rep. 1(3):287-292(2000)