

LRRC25 Antibody (C-term)
Affinity Purified Rabbit Polyclonal Antibody (Pab)
Catalog # AP10562b**Specification**

LRRC25 Antibody (C-term) - Product Information

Application	WB,E
Primary Accession	Q8N386
Other Accession	NP_660299.2
Reactivity	Human
Host	Rabbit
Clonality	Polyclonal
Isotype	Rabbit IgG
Calculated MW	33179
Antigen Region	242-270

LRRC25 Antibody (C-term) - Additional Information**Gene ID** 126364**Other Names**

Leucine-rich repeat-containing protein 25, Monocyte and plasmacytoid-activated protein, LRRC25, MAPA

Target/Specificity

This LRRC25 antibody is generated from rabbits immunized with a KLH conjugated synthetic peptide between 242-270 amino acids from the C-terminal region of human LRRC25.

Dilution

WB~~1:1000

Format

Purified polyclonal antibody supplied in PBS with 0.09% (W/V) sodium azide. This antibody is purified through a protein A column, followed by peptide affinity purification.

Storage

Maintain refrigerated at 2-8°C for up to 2 weeks. For long term storage store at -20°C in small aliquots to prevent freeze-thaw cycles.

Precautions

LRRC25 Antibody (C-term) is for research use only and not for use in diagnostic or therapeutic procedures.

LRRC25 Antibody (C-term) - Protein Information**Name** LRRC25**Synonyms** MAPA

Function Plays a role in the inhibition of RLR-mediated type I interferon signaling pathway by targeting RIGI for autophagic degradation. Interacts specifically with ISG15-associated RIGI to promote interaction between RIGI and the autophagic cargo receptor p62/SQSTM1 to mediate RIGI degradation via selective autophagy (PubMed:[29288164](#)). Also plays a role in the inhibition of NF-kappa-B signaling pathway and inflammatory response by promoting the degradation of p65/RELA.

Cellular Location

Membrane; Single-pass type I membrane protein. Cytoplasm

Tissue Location

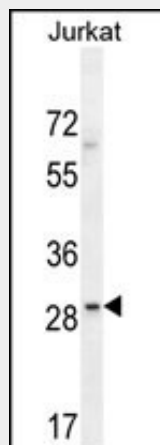
Expressed in plasmacytoid dendritic cells (PDC), monocyte-derived dendritic cells (MDDC), granulocytes, monocytes, B- lymphocytes, peripheral blood leukocytes, spleen, bone marrow, and, to a lesser extent, lymph nodes, fetal liver, and appendix but not in thymus.

LRRC25 Antibody (C-term) - Protocols

Provided below are standard protocols that you may find useful for product applications.

- [Western Blot](#)
- [Blocking Peptides](#)
- [Dot Blot](#)
- [Immunohistochemistry](#)
- [Immunofluorescence](#)
- [Immunoprecipitation](#)
- [Flow Cytometry](#)
- [Cell Culture](#)

LRRC25 Antibody (C-term) - Images



LRRC25 Antibody (C-term) (Cat. #AP10562b) western blot analysis in Jurkat cell line lysates (35ug/lane). This demonstrates the LRRC25 antibody detected the LRRC25 protein (arrow).

LRRC25 Antibody (C-term) - Background

May be involved in the activation of cells of innate and acquired immunity.

LRRC25 Antibody (C-term) - References

Lamesch, P., et al. Genomics 89(3):307-315(2007)

Clark, H.F., et al. Genome Res. 13(10):2265-2270(2003)
Rissoan, M.C., et al. Blood 100(9):3295-3303(2002)