

NXNL2 Antibody (Center)
Affinity Purified Rabbit Polyclonal Antibody (Pab)
Catalog # AP10565c**Specification**

NXNL2 Antibody (Center) - Product Information

| | |
|-------------------|--------------------------------------------------------------|
| Application | IHC-P, WB,E |
| Primary Accession | Q5VZ03 |
| Other Accession | NP_660326.2 , NP_001155097.1 |
| Reactivity | Human, Mouse |
| Host | Rabbit |
| Clonality | Polyclonal |
| Isotype | Rabbit IgG |
| Calculated MW | 17614 |
| Antigen Region | 80-108 |

NXNL2 Antibody (Center) - Additional Information**Gene ID** 158046**Other Names**

Nucleoredoxin-like protein 2, Rod-derived cone viability factor 2, RdCVF2, NXNL2, C9orf121

Target/Specificity

This NXNL2 antibody is generated from rabbits immunized with a KLH conjugated synthetic peptide between 80-108 amino acids from the Central region of human NXNL2.

Dilution

IHC-P~~1:50~100

WB~~1:1000

E~~Use at an assay dependent concentration.

Format

Purified polyclonal antibody supplied in PBS with 0.09% (W/V) sodium azide. This antibody is purified through a protein A column, followed by peptide affinity purification.

Storage

Maintain refrigerated at 2-8°C for up to 2 weeks. For long term storage store at -20°C in small aliquots to prevent freeze-thaw cycles.

Precautions

NXNL2 Antibody (Center) is for research use only and not for use in diagnostic or therapeutic procedures.

NXNL2 Antibody (Center) - Protein Information**Name** NXNL2

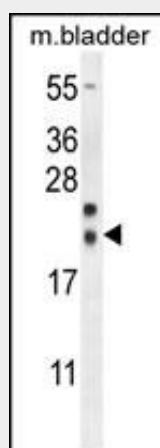
Synonyms C9orf121

Function May be involved in the maintenance of both the function and the viability of sensory neurons, including photoreceptors and olfactory neurons.

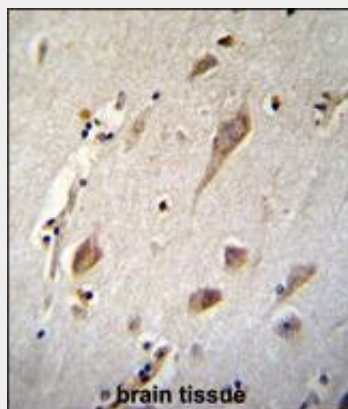
NXNL2 Antibody (Center) - Protocols

Provided below are standard protocols that you may find useful for product applications.

- [Western Blot](#)
- [Blocking Peptides](#)
- [Dot Blot](#)
- [Immunohistochemistry](#)
- [Immunofluorescence](#)
- [Immunoprecipitation](#)
- [Flow Cytometry](#)
- [Cell Culture](#)

NXNL2 Antibody (Center) - Images

NXNL2 Antibody (Center) (Cat. #AP10565c) western blot analysis in mouse bladder tissue lysates (35ug/lane). This demonstrates the NXNL2 antibody detected the NXNL2 protein (arrow).



NXNL2 Antibody (Center) (Cat. #AP10565c) immunohistochemistry analysis in formalin fixed and paraffin embedded human brain tissue followed by peroxidase conjugation of the secondary antibody and DAB staining. This data demonstrates the use of NXNL2 Antibody (Center) for

immunohistochemistry. Clinical relevance has not been evaluated.

NXNL2 Antibody (Center) - Background

The specific function of NXNL2 remains unknown.