

**GAGE13 Antibody (N-term)**  
**Affinity Purified Rabbit Polyclonal Antibody (Pab)**  
**Catalog # AP10568a****Specification**

---

**GAGE13 Antibody (N-term) - Product Information**

Application	FC, WB, IHC-P,E
Primary Accession	<a href="#">Q4V321</a>
Reactivity	Human
Host	Rabbit
Clonality	Polyclonal
Isotype	Rabbit IgG
Calculated MW	12957
Antigen Region	1-30

**GAGE13 Antibody (N-term) - Additional Information****Gene ID** 645051**Other Names**

G antigen 13, GAGE-13, G antigen 12A, GAGE-12A, GAGE13, GAGE12A

**Target/Specificity**

This GAGE13 antibody is generated from rabbits immunized with a KLH conjugated synthetic peptide between 1-30 amino acids from the N-terminal region of human GAGE13.

**Dilution**

FC~~1:10~50

WB~~1:1000

IHC-P~~1:50~100

E~~Use at an assay dependent concentration.

**Format**

Purified polyclonal antibody supplied in PBS with 0.09% (W/V) sodium azide. This antibody is purified through a protein A column, followed by peptide affinity purification.

**Storage**

Maintain refrigerated at 2-8°C for up to 2 weeks. For long term storage store at -20°C in small aliquots to prevent freeze-thaw cycles.

**Precautions**

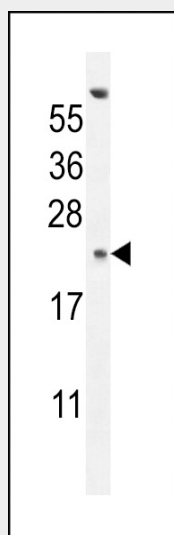
GAGE13 Antibody (N-term) is for research use only and not for use in diagnostic or therapeutic procedures.

**GAGE13 Antibody (N-term) - Protein Information****Name** GAGE13 ([HGNC:29081](#))

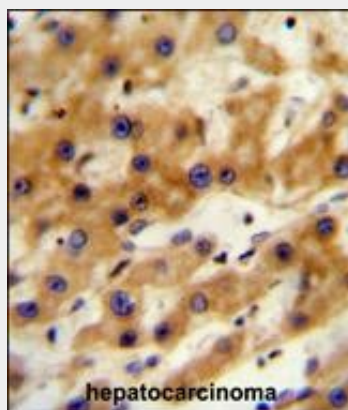
**Synonyms** GAGE12A**GAGE13 Antibody (N-term) - Protocols**

Provided below are standard protocols that you may find useful for product applications.

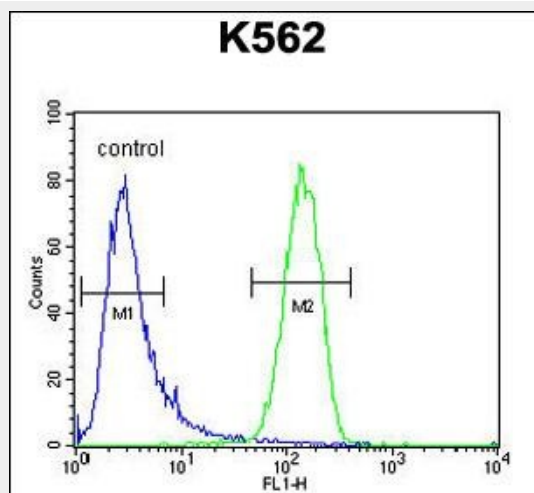
- [Western Blot](#)
- [Blocking Peptides](#)
- [Dot Blot](#)
- [Immunohistochemistry](#)
- [Immunofluorescence](#)
- [Immunoprecipitation](#)
- [Flow Cytometry](#)
- [Cell Culture](#)

**GAGE13 Antibody (N-term) - Images**

GAGE13 Antibody (N-term) (Cat. #AP10568a) western blot analysis in K562 cell line lysates (35ug/lane). This demonstrates the GAGE13 antibody detected the GAGE13 protein (arrow).



GAGE13 Antibody (N-term) (Cat. #AP10568a) immunohistochemistry analysis in formalin fixed and paraffin embedded human hepatocarcinoma followed by peroxidase conjugation of the secondary antibody and DAB staining. This data demonstrates the use of the GAGE13 Antibody (N-term) for immunohistochemistry. Clinical relevance has not been evaluated.



GAGE13 Antibody (N-term) (Cat. #AP10568a) flow cytometric analysis of K562 cells (right histogram) compared to a negative control cell (left histogram). FITC-conjugated goat-anti-rabbit secondary antibodies were used for the analysis.