

**ZFYVE28 Antibody (C-term)**  
**Affinity Purified Rabbit Polyclonal Antibody (Pab)**  
**Catalog # AP10577b****Specification**

---

**ZFYVE28 Antibody (C-term) - Product Information**

Application	WB, IHC-P,E
Primary Accession	<a href="#">O9HCC9</a>
Other Accession	<a href="#">NP_001166130.1</a> , <a href="#">NP_066023.2</a> , <a href="#">NP_001166131.1</a> , <a href="#">NP_001166127.1</a> , <a href="#">NP_001166129.1</a>
Reactivity	Human
Host	Rabbit
Clonality	Polyclonal
Isotype	Rabbit IgG
Antigen Region	604-633

**ZFYVE28 Antibody (C-term) - Additional Information****Gene ID** 57732**Other Names**

Lateral signaling target protein 2 homolog, hLst2, Zinc finger FYVE domain-containing protein 28, ZFYVE28, KIAA1643, LST2

**Target/Specificity**

This ZFYVE28 antibody is generated from rabbits immunized with a KLH conjugated synthetic peptide between 604-633 amino acids from the C-terminal region of human ZFYVE28.

**Dilution**

WB~~1:1000  
IHC-P~~1:50~100  
E~~Use at an assay dependent concentration.

**Format**

Purified polyclonal antibody supplied in PBS with 0.09% (W/V) sodium azide. This antibody is purified through a protein A column, followed by peptide affinity purification.

**Storage**

Maintain refrigerated at 2-8°C for up to 2 weeks. For long term storage store at -20°C in small aliquots to prevent freeze-thaw cycles.

**Precautions**

ZFYVE28 Antibody (C-term) is for research use only and not for use in diagnostic or therapeutic procedures.

**ZFYVE28 Antibody (C-term) - Protein Information**

**Name** ZFYVE28

**Synonyms** KIAA1643, LST2

**Function** Negative regulator of epidermal growth factor receptor (EGFR) signaling. Acts by promoting EGFR degradation in endosomes when not monoubiquitinated.

**Cellular Location**

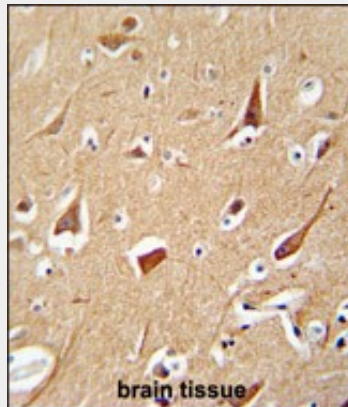
Cytoplasm, cytosol. Early endosome membrane. Note=Localizes to early endosome membrane in absence of Lys-87 monoubiquitination Localizes to cytosol when monoubiquitinated

**ZFYVE28 Antibody (C-term) - Protocols**

Provided below are standard protocols that you may find useful for product applications.

- [Western Blot](#)
- [Blocking Peptides](#)
- [Dot Blot](#)
- [Immunohistochemistry](#)
- [Immunofluorescence](#)
- [Immunoprecipitation](#)
- [Flow Cytometry](#)
- [Cell Culture](#)

**ZFYVE28 Antibody (C-term) - Images**



ZFYVE28 antibody (C-term) (Cat. #AP10577b) immunohistochemistry analysis in formalin fixed and paraffin embedded human brain tissue followed by peroxidase conjugation of the secondary antibody and DAB staining. This data demonstrates the use of the ZFYVE28 antibody (C-term) for immunohistochemistry. Clinical relevance has not been evaluated.

**ZFYVE28 Antibody (C-term) - Background**

Negative regulator of epidermal growth factor receptor (EGFR) signaling. Acts by promoting EGFR degradation in endosomes when not monoubiquitinated.