

ZIK1 Antibody (Center)
Affinity Purified Rabbit Polyclonal Antibody (Pab)
Catalog # AP10579c**Specification**

ZIK1 Antibody (Center) - Product Information

Application	FC, WB,E
Primary Accession	Q3SY52
Other Accession	NP_001010879.2
Reactivity	Human
Host	Rabbit
Clonality	Polyclonal
Isotype	Rabbit IgG
Calculated MW	54786
Antigen Region	186-215

ZIK1 Antibody (Center) - Additional Information**Gene ID** 284307**Other Names**

Zinc finger protein interacting with ribonucleoprotein K, Zinc finger protein 762, ZIK1, ZNF762

Target/Specificity

This ZIK1 antibody is generated from rabbits immunized with a KLH conjugated synthetic peptide between 186-215 amino acids from the Central region of human ZIK1.

Dilution

FC~~1:10~50

WB~~1:1000

E~~Use at an assay dependent concentration.

Format

Purified polyclonal antibody supplied in PBS with 0.09% (W/V) sodium azide. This antibody is purified through a protein A column, followed by peptide affinity purification.

Storage

Maintain refrigerated at 2-8°C for up to 2 weeks. For long term storage store at -20°C in small aliquots to prevent freeze-thaw cycles.

Precautions

ZIK1 Antibody (Center) is for research use only and not for use in diagnostic or therapeutic procedures.

ZIK1 Antibody (Center) - Protein Information**Name** ZIK1

Synonyms ZNF762

Function May be a transcriptional repressor.

Cellular Location

Nucleus.

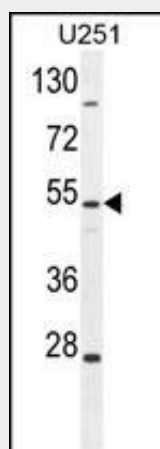
Tissue Location

Expressed at high levels in gastric glands, and at low levels in colon and small intestine. Silenced through promoter methylation in gastric glands with intestinal metaplasia

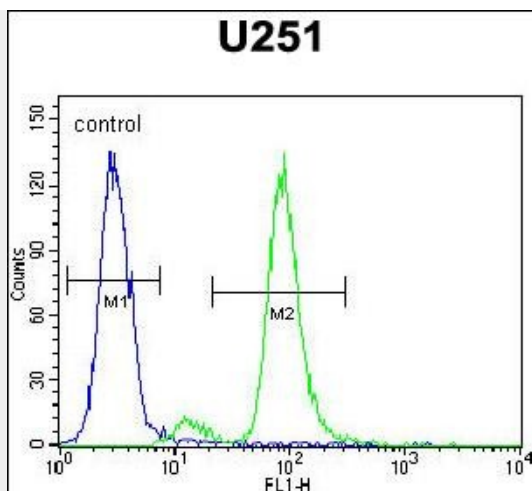
ZIK1 Antibody (Center) - Protocols

Provided below are standard protocols that you may find useful for product applications.

- [Western Blot](#)
- [Blocking Peptides](#)
- [Dot Blot](#)
- [Immunohistochemistry](#)
- [Immunofluorescence](#)
- [Immunoprecipitation](#)
- [Flow Cytometry](#)
- [Cell Culture](#)

ZIK1 Antibody (Center) - Images

ZIK1 Antibody (Center) (Cat. #AP10579c) western blot analysis in U251 cell line lysates (35ug/lane). This demonstrates the ZIK1 antibody detected the ZIK1 protein (arrow).



ZIK1 Antibody (Center) (Cat. #AP10579c) flow cytometric analysis of U251 cells (right histogram) compared to a negative control cell (left histogram). FITC-conjugated goat-anti-rabbit secondary antibodies were used for the analysis.

ZIK1 Antibody (Center) - Background

May be a transcriptional repressor (By similarity).

ZIK1 Antibody (Center) - References

Ota, T., et al. Nat. Genet. 36(1):40-45(2004)