

DEGS2 Antibody (C-term)
Affinity Purified Rabbit Polyclonal Antibody (Pab)
Catalog # AP10582B**Specification**

DEGS2 Antibody (C-term) - Product Information

Application	WB, IHC-P,E
Primary Accession	Q6QHC5
Other Accession	Q8R2F2 , Q0II71 , NP_996801.2
Reactivity	Human
Predicted	Bovine, Mouse
Host	Rabbit
Clonality	Polyclonal
Isotype	Rabbit IgG
Calculated MW	37197
Antigen Region	261-290

DEGS2 Antibody (C-term) - Additional Information**Gene ID** 123099**Other Names**

Sphingolipid delta(4)-desaturase/C4-hydroxylase DES2, 1---, 114--, Degenerative spermatocyte homolog 2, DEGS2 (HGNC:20113), C14orf66

Target/Specificity

This DEGS2 antibody is generated from rabbits immunized with a KLH conjugated synthetic peptide between 261-290 amino acids from the C-terminal region of human DEGS2.

Dilution

WB~~1:1000
IHC-P~~1:50~100

Format

Purified polyclonal antibody supplied in PBS with 0.09% (W/V) sodium azide. This antibody is purified through a protein A column, followed by peptide affinity purification.

Storage

Maintain refrigerated at 2-8°C for up to 2 weeks. For long term storage store at -20°C in small aliquots to prevent freeze-thaw cycles.

Precautions

DEGS2 Antibody (C-term) is for research use only and not for use in diagnostic or therapeutic procedures.

DEGS2 Antibody (C-term) - Protein Information

Name DEGS2 ([HGNC:20113](#))

Synonyms C14orf66

Function Bifunctional enzyme which acts both as a sphingolipid delta(4)-desaturase and a sphingolipid C4-monooxygenase.

Cellular Location

Endoplasmic reticulum membrane {ECO:0000250|UniProtKB:Q8R2F2}; Multi-pass membrane protein {ECO:0000250|UniProtKB:Q8R2F2}

Tissue Location

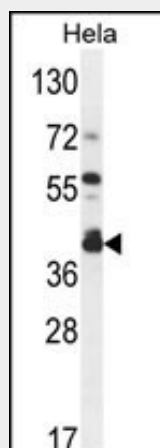
Highly expressed in skin, intestine and kidney.

DEGS2 Antibody (C-term) - Protocols

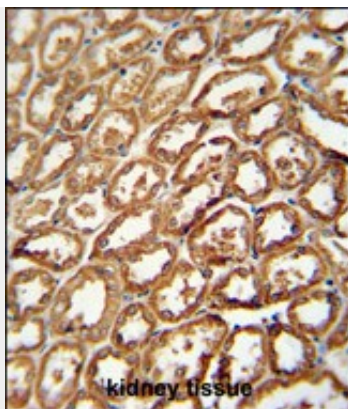
Provided below are standard protocols that you may find useful for product applications.

- [Western Blot](#)
- [Blocking Peptides](#)
- [Dot Blot](#)
- [Immunohistochemistry](#)
- [Immunofluorescence](#)
- [Immunoprecipitation](#)
- [Flow Cytometry](#)
- [Cell Culture](#)

DEGS2 Antibody (C-term) - Images



DEGS2 Antibody (C-term) (Cat. #AP10582b) western blot analysis in HeLa cell line lysates (35ug/lane). This demonstrates the DEGS2 antibody detected the DEGS2 protein (arrow).



DEGS2 antibody (C-term) (Cat. #AP10582b) immunohistochemistry analysis in formalin fixed and paraffin embedded human kidney tissue followed by peroxidase conjugation of the secondary antibody and DAB staining. This data demonstrates the use of the DEGS2 antibody (C-term) for immunohistochemistry. Clinical relevance has not been evaluated.

DEGS2 Antibody (C-term) - Background

DEGS2 encodes a bifunctional enzyme that is involved in the biosynthesis of phytosphingolipids in human skin and in other phytosphingolipid-containing tissues. This enzyme can act as a sphingolipid delta(4)-desaturase, and also as a sphingolipid C4-hydroxylase.

DEGS2 Antibody (C-term) - References

Shimada, M., et al. Hum. Genet. 128(4):433-441(2010)
Oh, J.H., et al. Mamm. Genome 16(12):942-954(2005)
Mizutani, Y., et al. FEBS Lett. 563 (1-3), 93-97 (2004) :