

**GTPBP8 Antibody (Center)**  
**Affinity Purified Rabbit Polyclonal Antibody (Pab)**  
**Catalog # AP10593c****Specification**

---

**GTPBP8 Antibody (Center) - Product Information**

Application	FC, WB, IHC-P,E
Primary Accession	<a href="#">Q8N3Z3</a>
Other Accession	<a href="#">Q0P5E7</a> , <a href="#">NP_054889.2</a>
Reactivity	Human
Predicted	Bovine
Host	Rabbit
Clonality	Polyclonal
Isotype	Rabbit IgG
Calculated MW	32147
Antigen Region	122-150

**GTPBP8 Antibody (Center) - Additional Information****Gene ID** 29083**Other Names**

GTP-binding protein 8, GTPBP8

**Target/Specificity**

This GTPBP8 antibody is generated from rabbits immunized with a KLH conjugated synthetic peptide between 122-150 amino acids from the Central region of human GTPBP8.

**Dilution**

FC~~1:10~50

WB~~1:1000

IHC-P~~1:50~100

E~~Use at an assay dependent concentration.

**Format**

Purified polyclonal antibody supplied in PBS with 0.09% (W/V) sodium azide. This antibody is purified through a protein A column, followed by peptide affinity purification.

**Storage**

Maintain refrigerated at 2-8°C for up to 2 weeks. For long term storage store at -20°C in small aliquots to prevent freeze-thaw cycles.

**Precautions**

GTPBP8 Antibody (Center) is for research use only and not for use in diagnostic or therapeutic procedures.

**GTPBP8 Antibody (Center) - Protein Information**

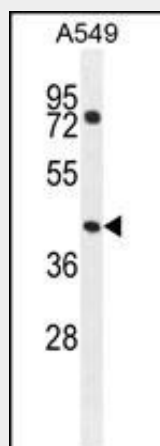
**Name** GTPBP8

### **GTPBP8 Antibody (Center) - Protocols**

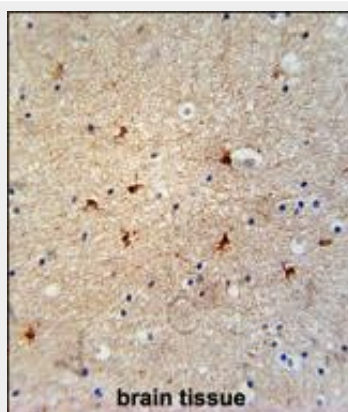
Provided below are standard protocols that you may find useful for product applications.

- [Western Blot](#)
- [Blocking Peptides](#)
- [Dot Blot](#)
- [Immunohistochemistry](#)
- [Immunofluorescence](#)
- [Immunoprecipitation](#)
- [Flow Cytometry](#)
- [Cell Culture](#)

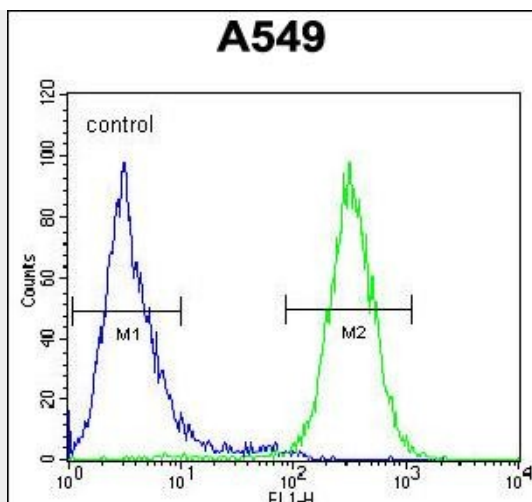
### **GTPBP8 Antibody (Center) - Images**



GTPBP8 Antibody (Center) (Cat. #AP10593c) western blot analysis in A549 cell line lysates (35ug/lane). This demonstrates the GTPBP8 antibody detected the GTPBP8 protein (arrow).



GTPBP8 Antibody (Center) (Cat. #AP10593c) immunohistochemistry analysis in formalin fixed and paraffin embedded human brain tissue followed by peroxidase conjugation of the secondary antibody and DAB staining. This data demonstrates the use of the GTPBP8 Antibody (Center) for immunohistochemistry. Clinical relevance has not been evaluated.



GTPBP8 Antibody (Center) (Cat. #AP10593c) flow cytometric analysis of A549 cells (right histogram) compared to a negative control cell (left histogram). FITC-conjugated goat-anti-rabbit secondary antibodies were used for the analysis.

#### **GTPBP8 Antibody (Center) - References**

Rose, J. Phd, et al. Mol. Med. (2010) In press :