

RASAL3 Antibody (C-term)
Affinity Purified Rabbit Polyclonal Antibody (Pab)
Catalog # AP10598b**Specification**

RASAL3 Antibody (C-term) - Product Information

Application	WB, IHC-P,E
Primary Accession	Q86YV0
Other Accession	NP_075055.1
Reactivity	Human
Host	Rabbit
Clonality	Polyclonal
Isotype	Rabbit IgG
Calculated MW	111898
Antigen Region	947-975

RASAL3 Antibody (C-term) - Additional Information**Gene ID** 64926**Other Names**

RAS protein activator like-3, RASAL3

Target/Specificity

This RASAL3 antibody is generated from rabbits immunized with a KLH conjugated synthetic peptide between 947-975 amino acids from the C-terminal region of human RASAL3.

Dilution

WB~~1:1000

IHC-P~~1:50~100

Format

Purified polyclonal antibody supplied in PBS with 0.09% (W/V) sodium azide. This antibody is purified through a protein A column, followed by peptide affinity purification.

Storage

Maintain refrigerated at 2-8°C for up to 2 weeks. For long term storage store at -20°C in small aliquots to prevent freeze-thaw cycles.

Precautions

RASAL3 Antibody (C-term) is for research use only and not for use in diagnostic or therapeutic procedures.

RASAL3 Antibody (C-term) - Protein Information**Name** RASAL3**Function** Functions as a Ras GTPase-activating protein. Plays an important role in the expansion

and functions of natural killer T (NKT) cells in the liver by negatively regulating RAS activity and the down- stream ERK signaling pathway.

Cellular Location

Cytoplasm. Cytoplasm, cell cortex

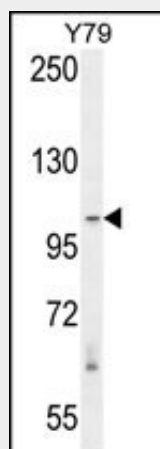
Tissue Location

Predominantly expressed in cells of hematopoietic lineages.

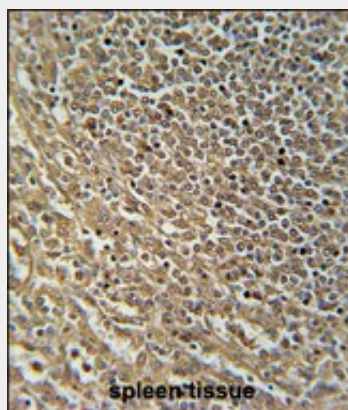
RASAL3 Antibody (C-term) - Protocols

Provided below are standard protocols that you may find useful for product applications.

- [Western Blot](#)
- [Blocking Peptides](#)
- [Dot Blot](#)
- [Immunohistochemistry](#)
- [Immunofluorescence](#)
- [Immunoprecipitation](#)
- [Flow Cytometry](#)
- [Cell Culture](#)

RASAL3 Antibody (C-term) - Images

RASAL3 Antibody (C-term) (Cat. #AP10598b) western blot analysis in Y79 cell line lysates (35ug/lane). This demonstrates the RASAL3 antibody detected the RASAL3 protein (arrow).



RASAL3 Antibody (C-term)(Cat. #AP10598b) immunohistochemistry analysis in formalin fixed and paraffin embedded human spleen tissue followed by peroxidase conjugation of the secondary antibody and DAB staining. This data demonstrates the use of the RASAL3 Antibody (C-term) for immunohistochemistry. Clinical relevance has not been evaluated.

RASAL3 Antibody (C-term) - Background

May functions as a Ras GTPase-activating protein (By similarity).

RASAL3 Antibody (C-term) - References

Kimura, K., et al. Genome Res. 16(1):55-65(2006)
Ota, T., et al. Nat. Genet. 36(1):40-45(2004)