

JOSD2 Antibody (N-term)
Affinity Purified Rabbit Polyclonal Antibody (Pab)
Catalog # AP10599a**Specification**

JOSD2 Antibody (N-term) - Product Information

Application	WB, FC, E
Primary Accession	O8TAC2
Other Accession	O9CR30 , NP_612207.1
Reactivity	Human, Mouse
Host	Rabbit
Clonality	Polyclonal
Isotype	Rabbit IgG
Antigen Region	33-61

JOSD2 Antibody (N-term) - Additional Information**Gene ID** 126119**Other Names**

Josephin-2, Josephin domain-containing protein 2, JOSD2

Target/Specificity

This JOSD2 antibody is generated from rabbits immunized with a KLH conjugated synthetic peptide between 33-61 amino acids from the N-terminal region of human JOSD2.

Dilution

WB~~1:1000

FC~~1:10~50

E~~Use at an assay dependent concentration.

Format

Purified polyclonal antibody supplied in PBS with 0.09% (W/V) sodium azide. This antibody is purified through a protein A column, followed by peptide affinity purification.

Storage

Maintain refrigerated at 2-8°C for up to 2 weeks. For long term storage store at -20°C in small aliquots to prevent freeze-thaw cycles.

Precautions

JOSD2 Antibody (N-term) is for research use only and not for use in diagnostic or therapeutic procedures.

JOSD2 Antibody (N-term) - Protein Information**Name** JOSD2**Function** Cleaves 'Lys-63'-linked poly-ubiquitin chains, and with lesser efficiency 'Lys-48'-linked

poly-ubiquitin chains (in vitro). May act as a deubiquitinating enzyme.

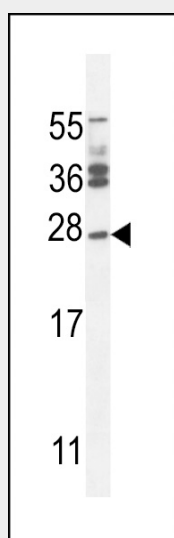
Cellular Location

Cytoplasm, cytosol.

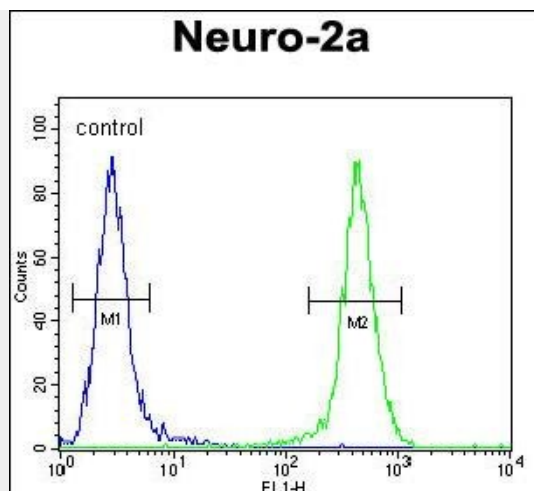
JOSD2 Antibody (N-term) - Protocols

Provided below are standard protocols that you may find useful for product applications.

- [Western Blot](#)
- [Blocking Peptides](#)
- [Dot Blot](#)
- [Immunohistochemistry](#)
- [Immunofluorescence](#)
- [Immunoprecipitation](#)
- [Flow Cytometry](#)
- [Cell Culture](#)

JOSD2 Antibody (N-term) - Images

Western blot analysis of lysates from HT-1080, A549 cell line (from left to right), using JOSD2 Antibody (N-term)(Cat. #AP10599a). AP10599a was diluted at 1:1000 at each lane. A goat anti-rabbit IgG H&L(HRP) at 1:5000 dilution was used as the secondary antibody. Lysates at 35ug per lane.



JSD2 Antibody (N-term) (Cat. #AP10599a) flow cytometric analysis of mouse Neuro-2a cells (right histogram) compared to a negative control cell (left histogram). FITC-conjugated goat-anti-rabbit secondary antibodies were used for the analysis.

JSD2 Antibody (N-term) - Background

The specific function of Josephin-2 is not yet known.

JSD2 Antibody (N-term) - References

Albrecht, M., et al. Proteins 50(2):355-370(2003)