

ZSWIM1 Antibody (C-term)
Affinity Purified Rabbit Polyclonal Antibody (Pab)
Catalog # AP10601B**Specification**

ZSWIM1 Antibody (C-term) - Product Information

Application	WB, IHC-P,E
Primary Accession	Q9BR11
Other Accession	NP_542170.3
Reactivity	Human
Host	Rabbit
Clonality	Polyclonal
Isotype	Rabbit IgG
Calculated MW	55071
Antigen Region	443-471

ZSWIM1 Antibody (C-term) - Additional Information**Gene ID** 90204**Other Names**

Zinc finger SWIM domain-containing protein 1, ZSWIM1, C20orf162

Target/Specificity

This ZSWIM1 antibody is generated from rabbits immunized with a KLH conjugated synthetic peptide between 443-471 amino acids from the C-terminal region of human ZSWIM1.

Dilution

WB~~1:1000

IHC-P~~1:50~100

Format

Purified polyclonal antibody supplied in PBS with 0.09% (W/V) sodium azide. This antibody is purified through a protein A column, followed by peptide affinity purification.

Storage

Maintain refrigerated at 2-8°C for up to 2 weeks. For long term storage store at -20°C in small aliquots to prevent freeze-thaw cycles.

Precautions

ZSWIM1 Antibody (C-term) is for research use only and not for use in diagnostic or therapeutic procedures.

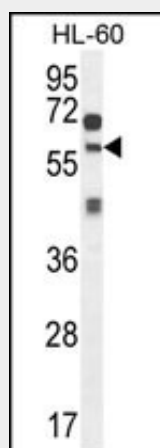
ZSWIM1 Antibody (C-term) - Protein Information**Name** ZSWIM1**Synonyms** C20orf162

ZSWIM1 Antibody (C-term) - Protocols

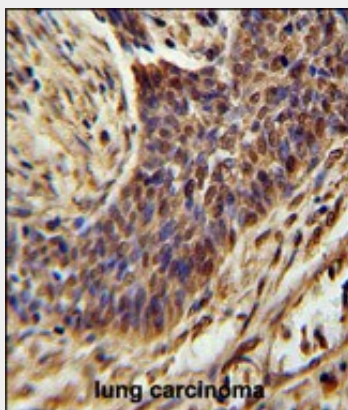
Provided below are standard protocols that you may find useful for product applications.

- [Western Blot](#)
- [Blocking Peptides](#)
- [Dot Blot](#)
- [Immunohistochemistry](#)
- [Immunofluorescence](#)
- [Immunoprecipitation](#)
- [Flow Cytometry](#)
- [Cell Culture](#)

ZSWIM1 Antibody (C-term) - Images



ZSWIM1 Antibody (C-term) (Cat. #AP10601b) western blot analysis in HL-60 cell line lysates (35ug/lane). This demonstrates the ZSWIM1 antibody detected the ZSWIM1 protein (arrow).



ZSWIM1 Antibody (C-term) (Cat. #AP10601b) immunohistochemistry analysis in formalin fixed and paraffin embedded human lung carcinoma followed by peroxidase conjugation of the secondary antibody and DAB staining. This data demonstrates the use of the ZSWIM1 Antibody (C-term) for immunohistochemistry. Clinical relevance has not been evaluated.

ZSWIM1 Antibody (C-term) - References

Deloukas, P., et al. Nature 414(6866):865-871(2001)