

LRRC34 Antibody (Center)
Affinity Purified Rabbit Polyclonal Antibody (Pab)
Catalog # AP10603c**Specification**

LRRC34 Antibody (Center) - Product Information

Application	WB,E
Primary Accession	O8IZ02
Other Accession	NP_001166250.1 , NP_699184.2
Reactivity	Human, Mouse, Rat
Host	Rabbit
Clonality	Polyclonal
Isotype	Rabbit IgG
Calculated MW	51277
Antigen Region	154-182

LRRC34 Antibody (Center) - Additional Information**Gene ID** 151827**Other Names**

Leucine-rich repeat-containing protein 34, LRRC34

Target/Specificity

This LRRC34 antibody is generated from rabbits immunized with a KLH conjugated synthetic peptide between 154-182 amino acids from the Central region of human LRRC34.

Dilution

WB~~1:2000

E~~Use at an assay dependent concentration.

Format

Purified polyclonal antibody supplied in PBS with 0.09% (W/V) sodium azide. This antibody is purified through a protein A column, followed by peptide affinity purification.

Storage

Maintain refrigerated at 2-8°C for up to 2 weeks. For long term storage store at -20°C in small aliquots to prevent freeze-thaw cycles.

Precautions

LRRC34 Antibody (Center) is for research use only and not for use in diagnostic or therapeutic procedures.

LRRC34 Antibody (Center) - Protein Information**Name** LRRC34**Function** Highly expressed in stem cells where it may be involved in regulation of pluripotency. In

embryonic stem cells (ESCs), important for normal expression of the pluripotency regulators POU5F1/OCT4 and KLF4. Also important for expression of the ectodermal marker gene NES and the endodermal marker gene GATA4. Promotes stem cell proliferation in vitro.

Cellular Location

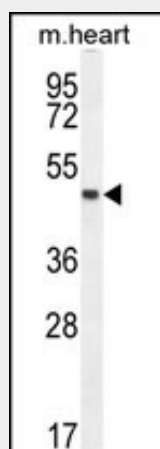
Nucleus {ECO:0000250|UniProtKB:Q9DAM1}. Nucleus, nucleolus {ECO:0000250|UniProtKB:Q9DAM1}. Cytoplasm {ECO:0000250|UniProtKB:Q9DAM1}. Note=As stem cells differentiate, translocates from the nucleolus to the nucleus and then to the cytoplasm. Colocalizes with NPM1 and NCL in the nucleolus {ECO:0000250|UniProtKB:Q9DAM1}

LRRC34 Antibody (Center) - Protocols

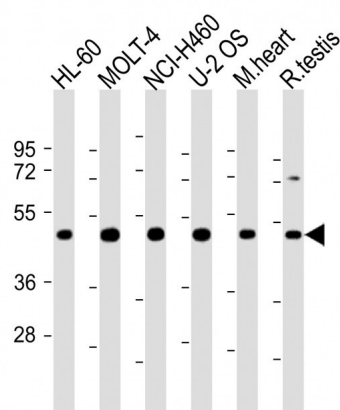
Provided below are standard protocols that you may find useful for product applications.

- [Western Blot](#)
- [Blocking Peptides](#)
- [Dot Blot](#)
- [Immunohistochemistry](#)
- [Immunofluorescence](#)
- [Immunoprecipitation](#)
- [Flow Cytometry](#)
- [Cell Culture](#)

LRRC34 Antibody (Center) - Images



LRRC34 Antibody (Center) (Cat. #AP10603c) western blot analysis in mouse heart tissue lysates (35ug/lane). This demonstrates the LRRC34 antibody detected the LRRC34 protein (arrow).



All lanes : Anti-LRRC34 Antibody (Center) at 1:2000 dilution Lane 1: HL-60 whole cell lysate Lane 2: MOLT-4 whole cell lysate Lane 3: NCI-H460 whole cell lysate Lane 4: U-2 OS whole cell lysate Lane 5: mouse heart lysate Lane 6: rat testis lysate Lysates/proteins at 20 µg per lane. Secondary Goat Anti-Rabbit IgG, (H+L), Peroxidase conjugated at 1/10000 dilution. Predicted band size : 46 kDa Blocking/Dilution buffer: 5% NFDM/TBST.