

HFM1 Antibody (C-term)
Affinity Purified Rabbit Polyclonal Antibody (Pab)
Catalog # AP10614b**Specification**

HFM1 Antibody (C-term) - Product Information

Application	FC, WB, IHC-P,E
Primary Accession	A2PYH4
Other Accession	NP_001017975.3
Reactivity	Human
Host	Rabbit
Clonality	Polyclonal
Isotype	Rabbit IgG
Calculated MW	162610
Antigen Region	1293-1321

HFM1 Antibody (C-term) - Additional Information**Gene ID** 164045**Other Names**

Probable ATP-dependent DNA helicase HFM1, SEC63 domain-containing protein 1, HFM1, SEC3D1

Target/Specificity

This HFM1 antibody is generated from rabbits immunized with a KLH conjugated synthetic peptide between 1293-1321 amino acids from the C-terminal region of human HFM1.

Dilution

FC~~1:10~50

WB~~1:1000

IHC-P~~1:50~100

E~~Use at an assay dependent concentration.

Format

Purified polyclonal antibody supplied in PBS with 0.09% (W/V) sodium azide. This antibody is purified through a protein A column, followed by peptide affinity purification.

Storage

Maintain refrigerated at 2-8°C for up to 2 weeks. For long term storage store at -20°C in small aliquots to prevent freeze-thaw cycles.

Precautions

HFM1 Antibody (C-term) is for research use only and not for use in diagnostic or therapeutic procedures.

HFM1 Antibody (C-term) - Protein Information**Name** HFM1

Synonyms SEC3D1

Function Required for crossover formation and complete synapsis of homologous chromosomes during meiosis.

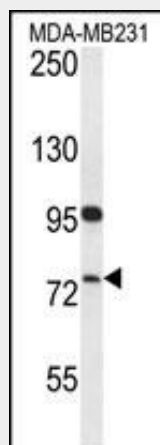
Tissue Location

Preferentially expressed in testis and ovary.

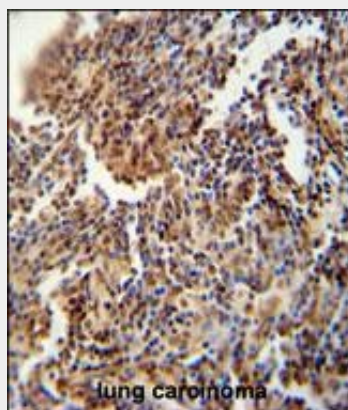
HFM1 Antibody (C-term) - Protocols

Provided below are standard protocols that you may find useful for product applications.

- [Western Blot](#)
- [Blocking Peptides](#)
- [Dot Blot](#)
- [Immunohistochemistry](#)
- [Immunofluorescence](#)
- [Immunoprecipitation](#)
- [Flow Cytometry](#)
- [Cell Culture](#)

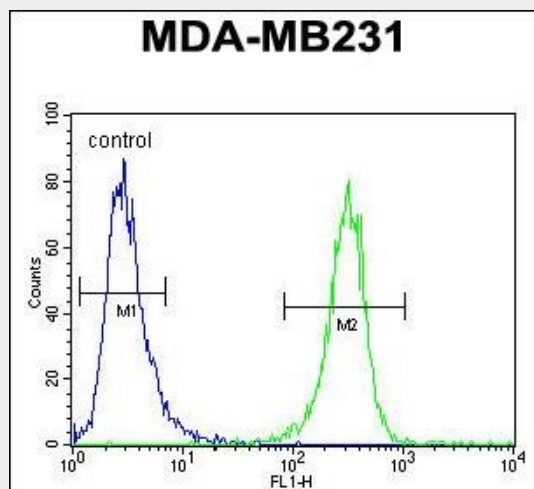
HFM1 Antibody (C-term) - Images

HFM1 Antibody (C-term) (Cat. #AP10614b) western blot analysis in MDA-MB231 cell line lysates (35ug/lane). This demonstrates the HFM1 antibody detected the HFM1 protein (arrow).



HFM1 antibody (C-term) (Cat. #AP10614b) immunohistochemistry analysis in formalin fixed and

paraffin embedded human lung carcinoma followed by peroxidase conjugation of the secondary antibody and DAB staining. This data demonstrates the use of the HFM1 antibody (C-term) for immunohistochemistry. Clinical relevance has not been evaluated.



HFM1 Antibody (C-term) (Cat. #AP10614b) flow cytometric analysis of MDA-MB231 cells (right histogram) compared to a negative control cell (left histogram). FITC-conjugated goat-anti-rabbit secondary antibodies were used for the analysis.

HFM1 Antibody (C-term) - References

Rose, J.E., et al. Mol. Med. 16 (7-8), 247-253 (2010) :
Tanaka, K., et al. DNA Seq. 17(3):242-246(2006)