

**PURG Antibody (C-term)**  
**Affinity Purified Rabbit Polyclonal Antibody (Pab)**  
**Catalog # AP10617b**

**Specification**

---

**PURG Antibody (C-term) - Product Information**

Application	FC, WB,E
Primary Accession	<a href="#">O9UJV8</a>
Other Accession	<a href="#">NP_001015508.1</a> , <a href="#">NP_037489.1</a>
Reactivity	Human
Host	Rabbit
Clonality	Polyclonal
Isotype	Rabbit IgG
Calculated MW	39556
Antigen Region	225-253

**PURG Antibody (C-term) - Additional Information**

**Gene ID** 29942

**Other Names**

Purine-rich element-binding protein gamma, PURG

**Target/Specificity**

This PURG antibody is generated from rabbits immunized with a KLH conjugated synthetic peptide between 225-253 amino acids from the C-terminal region of human PURG.

**Dilution**

FC~~1:10~50

WB~~1:1000

E~~Use at an assay dependent concentration.

**Format**

Purified polyclonal antibody supplied in PBS with 0.09% (W/V) sodium azide. This antibody is purified through a protein A column, followed by peptide affinity purification.

**Storage**

Maintain refrigerated at 2-8°C for up to 2 weeks. For long term storage store at -20°C in small aliquots to prevent freeze-thaw cycles.

**Precautions**

PURG Antibody (C-term) is for research use only and not for use in diagnostic or therapeutic procedures.

**PURG Antibody (C-term) - Protein Information**

**Name** PURG

**Cellular Location**

Nucleus.

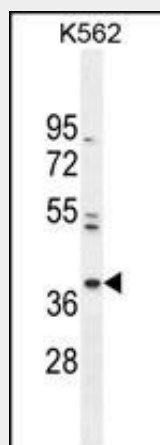
**Tissue Location**

Isoform 1 is expressed in testis and glioblastoma. Isoform 2 is expressed in fetal lung.

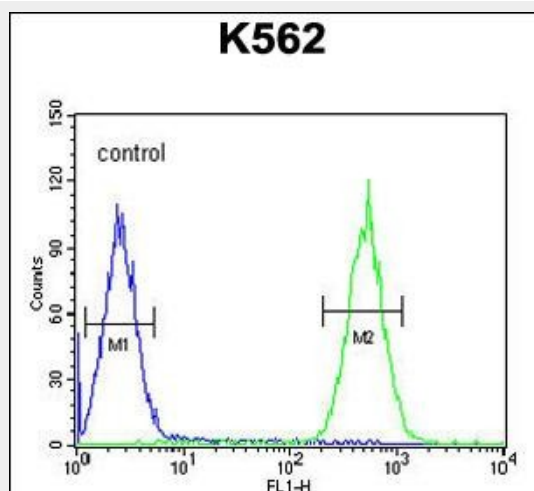
**PURG Antibody (C-term) - Protocols**

Provided below are standard protocols that you may find useful for product applications.

- [Western Blot](#)
- [Blocking Peptides](#)
- [Dot Blot](#)
- [Immunohistochemistry](#)
- [Immunofluorescence](#)
- [Immunoprecipitation](#)
- [Flow Cytometry](#)
- [Cell Culture](#)

**PURG Antibody (C-term) - Images**

PURG Antibody (C-term) (Cat. #AP10617b) western blot analysis in K562 cell line lysates (35ug/lane). This demonstrates the PURG antibody detected the PURG protein (arrow).



PURG Antibody (C-term) (Cat. #AP10617b) flow cytometric analysis of K562 cells (right histogram) compared to a negative control cell (left histogram). FITC-conjugated goat-anti-rabbit secondary antibodies were used for the analysis.

#### **PURG Antibody (C-term) - Background**

The exact function of this gene is not known, however, its encoded product is highly similar to purine-rich element binding protein A. The latter is a DNA-binding protein which binds preferentially to the single strand of the purine-rich element termed PUR, and has been implicated in the control of both DNA replication and transcription. PURG lies in close proximity to the Werner syndrome gene, but on the opposite strand, on chromosome 8p11. Two transcript variants encoding different isoforms have been found for this gene.

#### **PURG Antibody (C-term) - References**

Liu, H., et al. Nucleic Acids Res. 30(11):2417-2426(2002)