

CRIP3 Antibody (Center)
Affinity Purified Rabbit Polyclonal Antibody (Pab)
Catalog # AP10618c**Specification**

CRIP3 Antibody (Center) - Product Information

Application	WB, IHC-P,E
Primary Accession	Q6O6R5
Other Accession	NP_996805.2
Reactivity	Human
Host	Rabbit
Clonality	Polyclonal
Isotype	Rabbit IgG
Calculated MW	24088
Antigen Region	92-120

CRIP3 Antibody (Center) - Additional Information**Gene ID** 401262**Other Names**

Cysteine-rich protein 3, CRP-3, Chromosome 6 LIM domain only protein, h6LIMo, CRIP3, CRP3

Target/Specificity

This CRIP3 antibody is generated from rabbits immunized with a KLH conjugated synthetic peptide between 92-120 amino acids from the Central region of human CRIP3.

Dilution

WB~~1:1000

IHC-P~~1:50~100

Format

Purified polyclonal antibody supplied in PBS with 0.09% (W/V) sodium azide. This antibody is purified through a protein A column, followed by peptide affinity purification.

Storage

Maintain refrigerated at 2-8°C for up to 2 weeks. For long term storage store at -20°C in small aliquots to prevent freeze-thaw cycles.

Precautions

CRIP3 Antibody (Center) is for research use only and not for use in diagnostic or therapeutic procedures.

CRIP3 Antibody (Center) - Protein Information**Name** CRIP3**Synonyms** CRP3

Cellular Location

Cytoplasm.

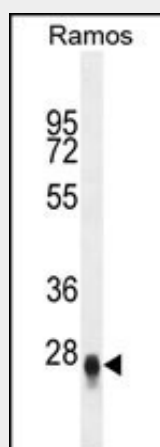
Tissue Location

Expressed in most tissues, but not in skeletal muscle.

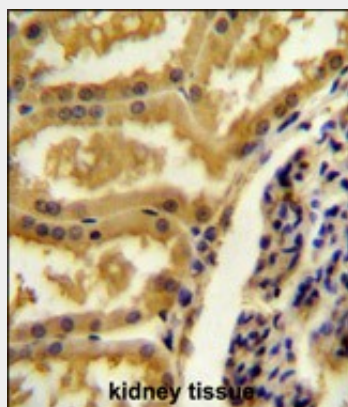
CRIP3 Antibody (Center) - Protocols

Provided below are standard protocols that you may find useful for product applications.

- [Western Blot](#)
- [Blocking Peptides](#)
- [Dot Blot](#)
- [Immunohistochemistry](#)
- [Immunofluorescence](#)
- [Immunoprecipitation](#)
- [Flow Cytometry](#)
- [Cell Culture](#)

CRIP3 Antibody (Center) - Images

CRIP3 Antibody (Center) (Cat. #AP10618c) western blot analysis in Ramos cell line lysates (35ug/lane). This demonstrates the CRIP3 antibody detected the CRIP3 protein (arrow).



CRIP3 Antibody (Center) (Cat. #AP10618c) immunohistochemistry analysis in formalin fixed and paraffin embedded human kidney tissue followed by peroxidase conjugation of the secondary

antibody and DAB staining. This data demonstrates the use of the CRIP3 Antibody (Center) for immunohistochemistry. Clinical relevance has not been evaluated.

CRIP3 Antibody (Center) - References

Casrouge, A., et al. Microbes Infect. 6(12):1063-1072(2004)

Mungall, A.J., et al. Nature 425(6960):805-811(2003)