

WDR21C Antibody (N-term)
Affinity Purified Rabbit Polyclonal Antibody (Pab)
Catalog # AP10619a**Specification**

WDR21C Antibody (N-term) - Product Information

Application	WB, IHC-P, FC,E
Primary Accession	Q8NA75
Other Accession	NP_689631.1
Reactivity	Human
Host	Rabbit
Clonality	Polyclonal
Isotype	Rabbit IgG
Calculated MW	43747
Antigen Region	1-30

WDR21C Antibody (N-term) - Additional Information**Gene ID** 138009**Other Names**

DDB1- and CUL4-associated factor 4-like protein 2, WD repeat-containing protein 21C, DCAF4L2, WDR21C

Target/Specificity

This WDR21C antibody is generated from rabbits immunized with a KLH conjugated synthetic peptide between 1-30 amino acids from the N-terminal region of human WDR21C.

DilutionWB~~1:1000
IHC-P~~1:50~100
FC~~1:10~50**Format**

Purified polyclonal antibody supplied in PBS with 0.09% (W/V) sodium azide. This antibody is purified through a protein A column, followed by peptide affinity purification.

Storage

Maintain refrigerated at 2-8°C for up to 2 weeks. For long term storage store at -20°C in small aliquots to prevent freeze-thaw cycles.

Precautions

WDR21C Antibody (N-term) is for research use only and not for use in diagnostic or therapeutic procedures.

WDR21C Antibody (N-term) - Protein Information**Name** DCAF4L2

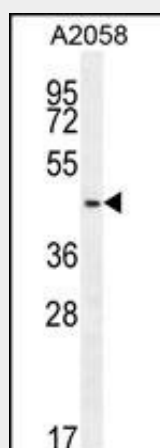
Synonyms WDR21C

WDR21C Antibody (N-term) - Protocols

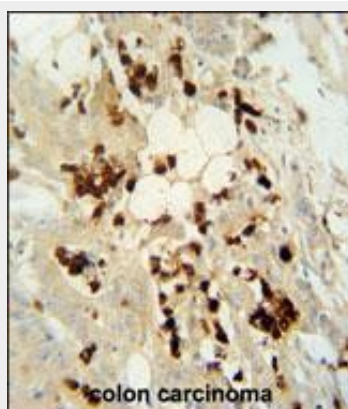
Provided below are standard protocols that you may find useful for product applications.

- [Western Blot](#)
- [Blocking Peptides](#)
- [Dot Blot](#)
- [Immunohistochemistry](#)
- [Immunofluorescence](#)
- [Immunoprecipitation](#)
- [Flow Cytometry](#)
- [Cell Culture](#)

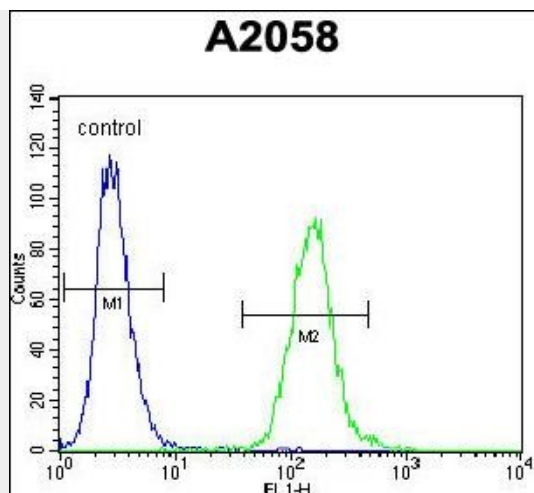
WDR21C Antibody (N-term) - Images



WDR21C Antibody (N-term) (Cat. #AP10619a) western blot analysis in A2058 cell line lysates (35ug/lane). This demonstrates the WDR21C antibody detected the WDR21C protein (arrow).



WDR21C antibody (N-term) (Cat. #AP10619a) immunohistochemistry analysis in formalin fixed and paraffin embedded human colon carcinoma followed by peroxidase conjugation of the secondary antibody and DAB staining. This data demonstrates the use of the WDR21C antibody (N-term) for immunohistochemistry. Clinical relevance has not been evaluated.



WDR21C Antibody (N-term) (Cat. #AP10619a) flow cytometric analysis of A2058 cells (right histogram) compared to a negative control cell (left histogram). FITC-conjugated goat-anti-rabbit secondary antibodies were used for the analysis.

WDR21C Antibody (N-term) - References

Gerhard, D.S., et al. Genome Res. 14 (10B), 2121-2127 (2004) :