

IGSF5 Antibody (N-term)
Affinity Purified Rabbit Polyclonal Antibody (Pab)
Catalog # AP10623a**Specification**

IGSF5 Antibody (N-term) - Product Information

Application	WB,E
Primary Accession	O9NSI5
Other Accession	NP_001073913.1
Reactivity	Human
Host	Rabbit
Clonality	Polyclonal
Isotype	Rabbit IgG
Calculated MW	44593
Antigen Region	1-30

IGSF5 Antibody (N-term) - Additional Information**Gene ID** 150084**Other Names**

Immunoglobulin superfamily member 5, IgSF5, Junctional adhesion molecule 4, JAM-4, IGSF5, JAM4

Target/Specificity

This IGSF5 antibody is generated from rabbits immunized with a KLH conjugated synthetic peptide between 1-30 amino acids from the N-terminal region of human IGSF5.

Dilution

WB~~1:1000

E~~Use at an assay dependent concentration.

Format

Purified polyclonal antibody supplied in PBS with 0.09% (W/V) sodium azide. This antibody is purified through a protein A column, followed by peptide affinity purification.

Storage

Maintain refrigerated at 2-8°C for up to 2 weeks. For long term storage store at -20°C in small aliquots to prevent freeze-thaw cycles.

Precautions

IGSF5 Antibody (N-term) is for research use only and not for use in diagnostic or therapeutic procedures.

IGSF5 Antibody (N-term) - Protein Information**Name** IGSF5**Synonyms** JAM4

Function Provides, together with MAGI1, an adhesion machinery at tight junctions, which may regulate the permeability of kidney glomerulus and small intestinal epithelial cells. Mediates calcium-independent homophilic cell adhesion. In testis, it may function as a cell adhesion molecule rather than a tight-junction protein. It may participate in the adhesion between spermatogonia-spermatogonia, spermatogonia-Sertoli cells, and Sertoli cells-Sertoli cells (By similarity).

Cellular Location

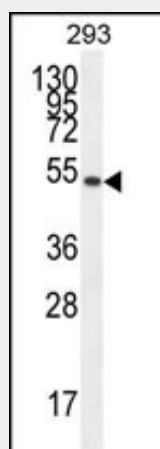
Apical cell membrane {ECO:0000250|UniProtKB:Q5VJ70}; Single-pass type I membrane protein. Cell junction, tight junction {ECO:0000250|UniProtKB:Q5VJ70}

IGSF5 Antibody (N-term) - Protocols

Provided below are standard protocols that you may find useful for product applications.

- [Western Blot](#)
- [Blocking Peptides](#)
- [Dot Blot](#)
- [Immunohistochemistry](#)
- [Immunofluorescence](#)
- [Immunoprecipitation](#)
- [Flow Cytometry](#)
- [Cell Culture](#)

IGSF5 Antibody (N-term) - Images



IGSF5 Antibody (N-term) (Cat. #AP10623a) western blot analysis in 293 cell line lysates (35ug/lane). This demonstrates the IGSF5 antibody detected the IGSF5 protein (arrow).

IGSF5 Antibody (N-term) - Background

Provides, together with MAGI1, an adhesion machinery at tight junctions, which may regulate the permeability of kidney glomerulus and small intestinal epithelial cells. Mediates calcium-independent homophilic cell adhesion. In testis, it may function as a cell adhesion molecule rather than a tight-junction protein. It may participate in the adhesion between spermatogonia-spermatogonia, spermatogonia-Sertoli cells, and Sertoli cells-Sertoli cells (By similarity).

IGSF5 Antibody (N-term) - References

Rose, J. Phd, et al. Mol. Med. (2010) In press :