

ZSWIM6 Antibody (C-term)
Affinity Purified Rabbit Polyclonal Antibody (Pab)
Catalog # AP10633b**Specification**

ZSWIM6 Antibody (C-term) - Product Information

Application	WB, IHC-P, FC,E
Primary Accession	O9HCJ5
Other Accession	Q80TB7 , NP_065979.1
Reactivity	Human
Predicted	Mouse
Host	Rabbit
Clonality	Polyclonal
Isotype	Rabbit IgG
Calculated MW	133470
Antigen Region	1148-1177

ZSWIM6 Antibody (C-term) - Additional Information**Gene ID** 57688**Other Names**

Zinc finger SWIM domain-containing protein 6, ZSWIM6, KIAA1577

Target/Specificity

This ZSWIM6 antibody is generated from rabbits immunized with a KLH conjugated synthetic peptide between 1148-1177 amino acids from the C-terminal region of human ZSWIM6.

Dilution

WB~~1:1000
IHC-P~~1:50~100
FC~~1:10~50

Format

Purified polyclonal antibody supplied in PBS with 0.09% (W/V) sodium azide. This antibody is purified through a protein A column, followed by peptide affinity purification.

Storage

Maintain refrigerated at 2-8°C for up to 2 weeks. For long term storage store at -20°C in small aliquots to prevent freeze-thaw cycles.

Precautions

ZSWIM6 Antibody (C-term) is for research use only and not for use in diagnostic or therapeutic procedures.

ZSWIM6 Antibody (C-term) - Protein Information**Name** ZSWIM6 {ECO:0000303|PubMed:29198722, ECO:0000312|HGNC:HGNC:29316}

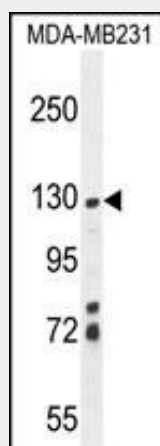
Function involved in nervous system development, important for striatal morphology and motor regulation.

ZSWIM6 Antibody (C-term) - Protocols

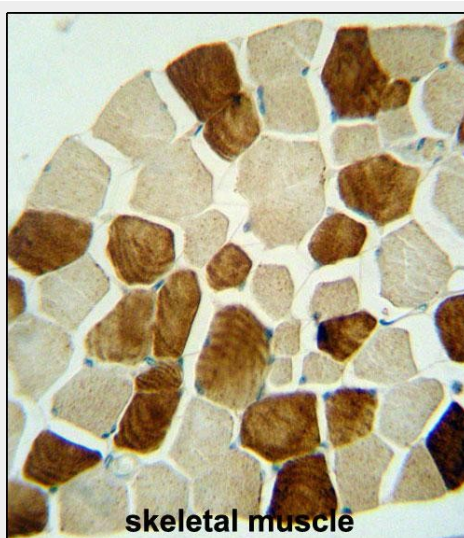
Provided below are standard protocols that you may find useful for product applications.

- [Western Blot](#)
- [Blocking Peptides](#)
- [Dot Blot](#)
- [Immunohistochemistry](#)
- [Immunofluorescence](#)
- [Immunoprecipitation](#)
- [Flow Cytometry](#)
- [Cell Culture](#)

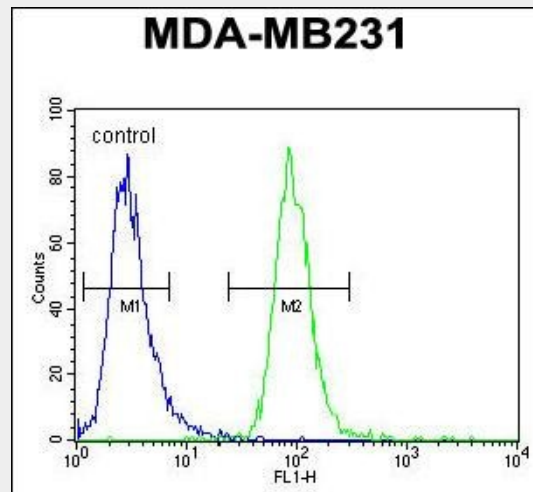
ZSWIM6 Antibody (C-term) - Images



ZSWIM6 Antibody (C-term) (Cat. #AP10633b) western blot analysis in MDA-MB231 cell line lysates (35ug/lane). This demonstrates the ZSWIM6 antibody detected the ZSWIM6 protein (arrow).



ZSWIM6 antibody (C-term) (Cat. #AP10633b) immunohistochemistry analysis in formalin fixed and paraffin embedded human skeletal muscle followed by peroxidase conjugation of the secondary antibody and DAB staining. This data demonstrates the use of the ZSWIM6 antibody (C-term) for immunohistochemistry. Clinical relevance has not been evaluated.



ZSWIM6 Antibody (C-term) (Cat. #AP10633b) flow cytometric analysis of MDA-MB231 cells (right histogram) compared to a negative control cell (left histogram). FITC-conjugated goat-anti-rabbit secondary antibodies were used for the analysis.