

PCOTH Antibody (Center)
Affinity Purified Rabbit Polyclonal Antibody (Pab)
Catalog # AP10641c

Specification

PCOTH Antibody (Center) - Product Information

| | |
|-------------------|--------------------------------|
| Application | FC, IHC-P, WB,E |
| Primary Accession | Q58A44 |
| Other Accession | NP_001014442.2 |
| Reactivity | Human |
| Host | Rabbit |
| Clonality | Polyclonal |
| Isotype | Rabbit IgG |
| Calculated MW | 10968 |
| Antigen Region | 14-42 |

PCOTH Antibody (Center) - Additional Information

Other Names

Prostate collagen triple helix protein, C1QTNF9B antisense RNA 1, C1QTNF9B antisense gene protein 1, C1QTNF9B-AS1, PCOTH

Target/Specificity

This PCOTH antibody is generated from rabbits immunized with a KLH conjugated synthetic peptide between 14-42 amino acids from the Central region of human PCOTH.

Dilution

FC~~1:10~50
IHC-P~~1:50~100
WB~~1:1000
E~~Use at an assay dependent concentration.

Format

Purified polyclonal antibody supplied in PBS with 0.09% (W/V) sodium azide. This antibody is purified through a protein A column, followed by peptide affinity purification.

Storage

Maintain refrigerated at 2-8°C for up to 2 weeks. For long term storage store at -20°C in small aliquots to prevent freeze-thaw cycles.

Precautions

PCOTH Antibody (Center) is for research use only and not for use in diagnostic or therapeutic procedures.

PCOTH Antibody (Center) - Protein Information

Name PCOTH

Synonyms C1QTNF9B-AS1

Function May be involved in growth and survival of prostate cancer cells through the TAF-Ibeta pathway.

Cellular Location

Cytoplasm.

Tissue Location

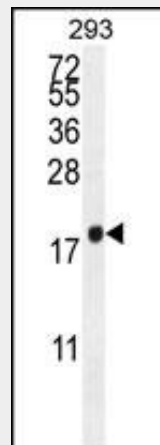
Expressed in prostate and testis. Weakly or not expressed in other tissues. Overexpressed in prostate cancers

PCOTH Antibody (Center) - Protocols

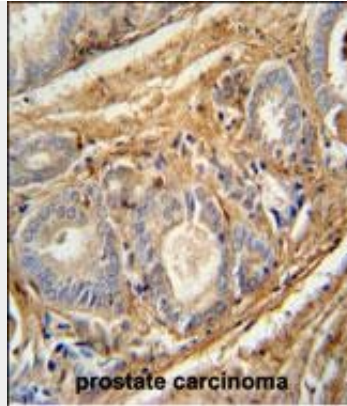
Provided below are standard protocols that you may find useful for product applications.

- [Western Blot](#)
- [Blocking Peptides](#)
- [Dot Blot](#)
- [Immunohistochemistry](#)
- [Immunofluorescence](#)
- [Immunoprecipitation](#)
- [Flow Cytometry](#)
- [Cell Culture](#)

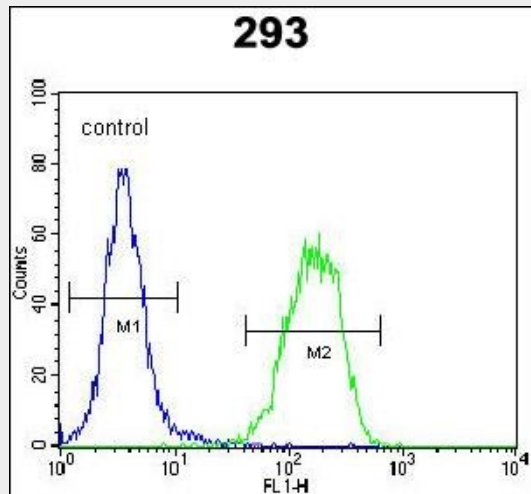
PCOTH Antibody (Center) - Images



PCOTH Antibody (Center) (Cat. #AP10641c) western blot analysis in 293 cell line lysates (35ug/lane). This demonstrates the PCOTH antibody detected the PCOTH protein (arrow).



PCOTH antibody (Center) (Cat. #AP10641c) immunohistochemistry analysis in formalin fixed and paraffin embedded human prostate carcinoma followed by peroxidase conjugation of the secondary antibody and DAB staining. This data demonstrates the use of the PCOTH antibody (Center) for immunohistochemistry. Clinical relevance has not been evaluated.



PCOTH Antibody (Center) (Cat. #AP10641c) flow cytometric analysis of 293 cells (right histogram) compared to a negative control cell (left histogram). FITC-conjugated goat-anti-rabbit secondary antibodies were used for the analysis.

PCOTH Antibody (Center) - Background

May be involved in growth and survival of prostate cancer cells through the TAF-Ibeta pathway.

PCOTH Antibody (Center) - References

Anazawa, Y., et al. Cancer Res. 65(11):4578-4586(2005)