

**CEP70 Antibody (Center)**  
**Affinity Purified Rabbit Polyclonal Antibody (Pab)**  
**Catalog # AP10646c****Specification**

---

**CEP70 Antibody (Center) - Product Information**

Application	WB, IHC-P, FC,E
Primary Accession	<a href="#">O8NHQ1</a>
Other Accession	<a href="#">Q4R7V1</a> , <a href="#">NP_077817.2</a>
Reactivity	Human, Hamster
Predicted	Monkey
Host	Rabbit
Clonality	Polyclonal
Isotype	Rabbit IgG
Calculated MW	69752
Antigen Region	309-338

**CEP70 Antibody (Center) - Additional Information****Gene ID** 80321**Other Names**

Centrosomal protein of 70 kDa, Cep70, p10-binding protein, CEP70, BITE

**Target/Specificity**

This CEP70 antibody is generated from rabbits immunized with a KLH conjugated synthetic peptide between 309-338 amino acids from the Central region of human CEP70.

**Dilution**

WB~~1:1000  
IHC-P~~1:50~100  
FC~~1:10~50

**Format**

Purified polyclonal antibody supplied in PBS with 0.09% (W/V) sodium azide. This antibody is purified through a protein A column, followed by peptide affinity purification.

**Storage**

Maintain refrigerated at 2-8°C for up to 2 weeks. For long term storage store at -20°C in small aliquots to prevent freeze-thaw cycles.

**Precautions**

CEP70 Antibody (Center) is for research use only and not for use in diagnostic or therapeutic procedures.

**CEP70 Antibody (Center) - Protein Information****Name** CEP70

## Synonyms BITE

**Function** Plays a role in the organization of both preexisting and nascent microtubules in interphase cells. During mitosis, required for the organization and orientation of the mitotic spindle.

## Cellular Location

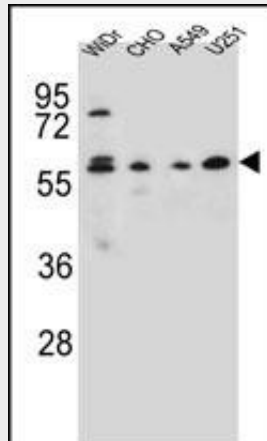
Cytoplasm, cytoskeleton, microtubule organizing center, centrosome. Note=Localized at the center of the radial microtubule array in interphase and at the spindle poles during various stages of mitosis

## CEP70 Antibody (Center) - Protocols

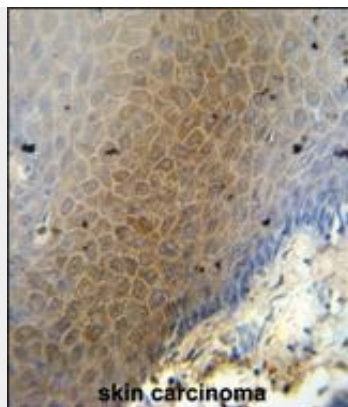
Provided below are standard protocols that you may find useful for product applications.

- [Western Blot](#)
- [Blocking Peptides](#)
- [Dot Blot](#)
- [Immunohistochemistry](#)
- [Immunofluorescence](#)
- [Immunoprecipitation](#)
- [Flow Cytometry](#)
- [Cell Culture](#)

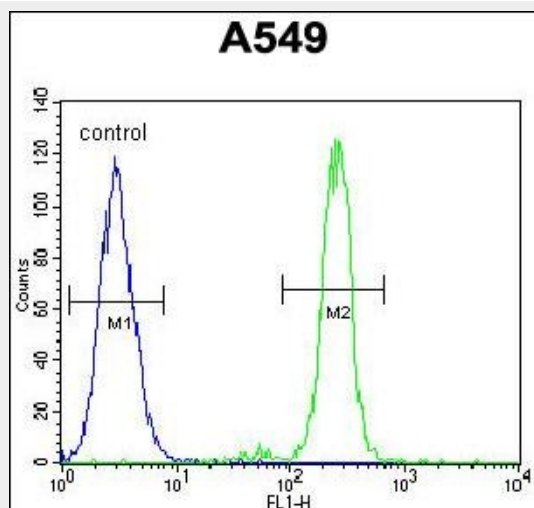
## CEP70 Antibody (Center) - Images



CEP70 Antibody (Center) (Cat. #AP10646c) western blot analysis in WiDr, CHO, A549, U251 cell line lysates (35ug/lane). This demonstrates the CEP70 antibody detected the CEP70 protein (arrow).



CEP70 antibody (Center) (Cat. #AP10646c) immunohistochemistry analysis in formalin fixed and paraffin embedded human skin carcinoma followed by peroxidase conjugation of the secondary antibody and DAB staining. This data demonstrates the use of the CEP70 antibody (Center) for immunohistochemistry. Clinical relevance has not been evaluated.



CEP70 Antibody (Center) (Cat. #AP10646c) flow cytometric analysis of A549 cells (right histogram) compared to a negative control cell (left histogram). FITC-conjugated goat-anti-rabbit secondary antibodies were used for the analysis.

#### CEP70 Antibody (Center) - References

- Venkatesan, K., et al. Nat. Methods 6(1):83-90(2009)
- Lim, J., et al. Cell 125(4):801-814(2006)
- Petretti, C., et al. EMBO Rep. 7(4):418-424(2006)
- Andersen, J.S., et al. Nature 426(6966):570-574(2003)
- Casenghi, M., et al. Dev. Cell 5(1):113-125(2003)