

**ARV1 Antibody (N-term)**  
**Affinity Purified Rabbit Polyclonal Antibody (Pab)**  
**Catalog # AP10655a****Specification**

---

**ARV1 Antibody (N-term) - Product Information**

Application	WB, IHC-P, FC,E
Primary Accession	<a href="#">O9H2C2</a>
Other Accession	<a href="#">O3SZW3</a> , <a href="#">NP_073623.1</a>
Reactivity	Human, Mouse
Predicted	Bovine
Host	Rabbit
Clonality	Polyclonal
Isotype	Rabbit IgG
Antigen Region	23-51

**ARV1 Antibody (N-term) - Additional Information****Gene ID** 64801**Other Names**

Protein ARV1, hARV1, ARV1

**Target/Specificity**

This ARV1 antibody is generated from rabbits immunized with a KLH conjugated synthetic peptide between 23-51 amino acids from the N-terminal region of human ARV1.

**Dilution**

WB~~1:2000  
IHC-P~~1:50~100  
FC~~1:25

**Format**

Purified polyclonal antibody supplied in PBS with 0.09% (W/V) sodium azide. This antibody is purified through a protein A column, followed by peptide affinity purification.

**Storage**

Maintain refrigerated at 2-8°C for up to 2 weeks. For long term storage store at -20°C in small aliquots to prevent freeze-thaw cycles.

**Precautions**

ARV1 Antibody (N-term) is for research use only and not for use in diagnostic or therapeutic procedures.

**ARV1 Antibody (N-term) - Protein Information****Name** ARV1

**Function** Plays a role as a mediator in the endoplasmic reticulum (ER) cholesterol and bile acid homeostasis (PubMed:[11063737](#), PubMed:[12145310](#), PubMed:[20663892](#)). Participates in sterol transport out of the ER and distribution into plasma membranes (PubMed:[20663892](#)).

**Cellular Location**

Endoplasmic reticulum membrane; Multi-pass membrane protein

**Tissue Location**

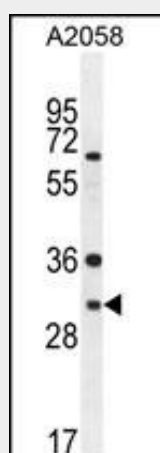
Ubiquitous. Highly expressed in liver and adipose.

**ARV1 Antibody (N-term) - Protocols**

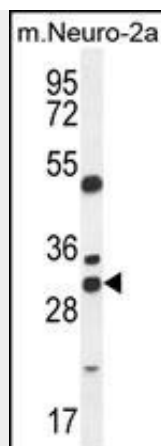
Provided below are standard protocols that you may find useful for product applications.

- [Western Blot](#)
- [Blocking Peptides](#)
- [Dot Blot](#)
- [Immunohistochemistry](#)
- [Immunofluorescence](#)
- [Immunoprecipitation](#)
- [Flow Cytometry](#)
- [Cell Culture](#)

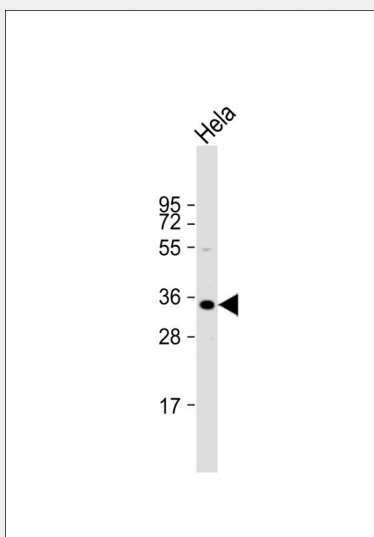
**ARV1 Antibody (N-term) - Images**



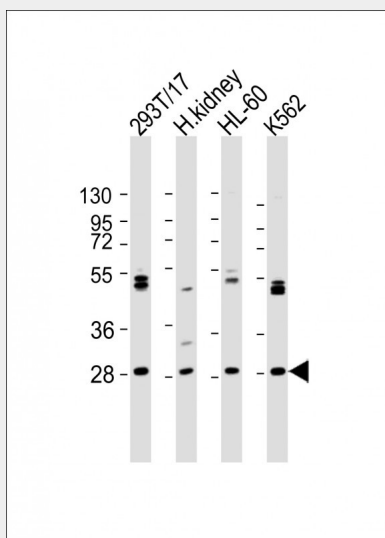
ARV1 Antibody (N-term) (Cat. #AP10655a) western blot analysis in A2058 cell line lysates (35ug/lane). This demonstrates the ARV1 antibody detected the ARV1 protein (arrow).



ARV1 Antibody (N-term) (Cat. #AP10655a) western blot analysis in mouse Neuro-2a cell line lysates (35ug/lane). This demonstrates the ARV1 antibody detected the ARV1 protein (arrow).

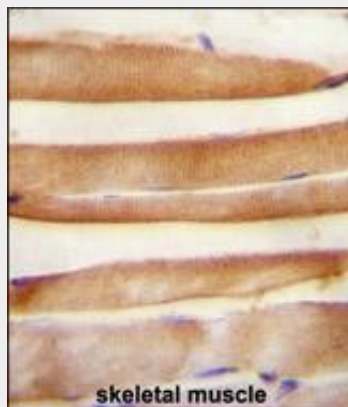


Anti-ARV1 Antibody (N-term) at 1:2000 dilution + HeLa whole cell lysate Lysates/proteins at 20 µg per lane. Secondary Goat Anti-Rabbit IgG, (H+L), Peroxidase conjugated at 1/10000 dilution. Predicted band size : 31 kDa Blocking/Dilution buffer: 5% NFDM/TBST.

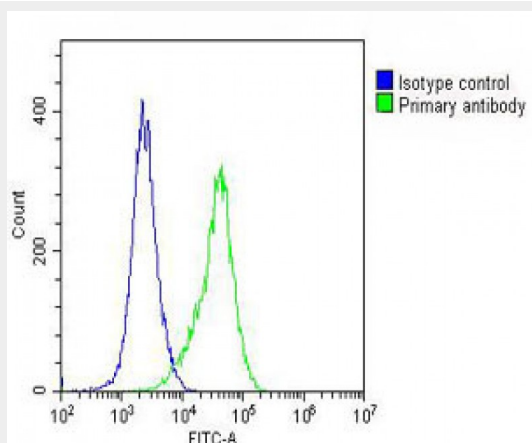


All lanes : Anti-ARV1 Antibody (N-term) at 1:2000 dilution Lane 1: 293T/17 whole cell lysate Lane

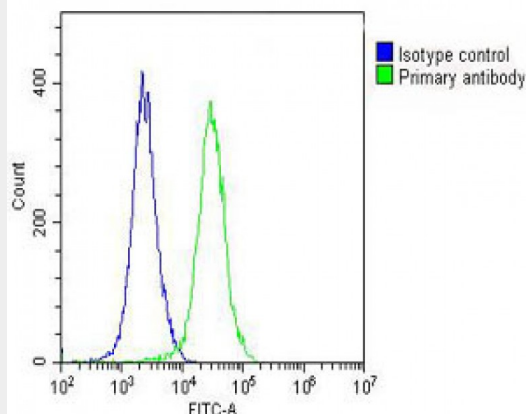
2: human kidney lysate Lane 3: HL-60 whole cell lysate Lane 4: K562 whole cell lysate Lysates/proteins at 20 µg per lane. Secondary Goat Anti-Rabbit IgG, (H+L), Peroxidase conjugated at 1/10000 dilution. Predicted band size : 31 kDa Blocking/Dilution buffer: 5% NFDM/TBST.



ARV1 antibody (N-term) (Cat. #AP10655a) immunohistochemistry analysis in formalin fixed and paraffin embedded human skeletal muscle followed by peroxidase conjugation of the secondary antibody and DAB staining. This data demonstrates the use of the ARV1 antibody (N-term) for immunohistochemistry. Clinical relevance has not been evaluated.



Overlay histogram showing A2058 cells stained with AP10655A (green line). The cells were fixed with 2% paraformaldehyde (10 min) and then permeabilized with 90% methanol for 10 min. The cells were then incubated in 2% bovine serum albumin to block non-specific protein-protein interactions followed by the antibody (AP10655A, 1:25 dilution) for 60 min at 37°C. The secondary antibody used was Goat-Anti-Rabbit IgG, DyLight® 488 Conjugated Highly Cross-Adsorbed (OH191631) at 1/200 dilution for 40 min at 37°C. Isotype control antibody (blue line) was rabbit IgG (1 µg/1x10<sup>6</sup> cells) used under the same conditions. Acquisition of >10,000 events was performed.



Overlay histogram showing A2058 cells stained with AP10655A(green line). The cells were fixed with 2% paraformaldehyde (10 min) and then permeabilized with 90% methanol for 10 min. The cells were then incubated in 2% bovine serum albumin to block non-specific protein-protein interactions followed by the antibody (AP10655A, 1:25 dilution) for 60 min at 37°C. The secondary antibody used was Goat-Anti-Rabbit IgG, DyLight® 488 Conjugated Highly Cross-Adsorbed(OH191631) at 1/200 dilution for 40 min at 37°C. Isotype control antibody (blue line) was rabbit IgG (1µg/1x10<sup>6</sup> cells) used under the same conditions. Acquisition of >10, 000 events was performed.

#### **ARV1 Antibody (N-term) - Background**

May act as a mediator of sterol homeostasis (Potential).

#### **ARV1 Antibody (N-term) - References**

Tong, F., et al. J. Biol. Chem. 285(44):33632-33641(2010)  
Lamesch, P., et al. Genomics 89(3):307-315(2007)  
Swain, E., et al. J. Biol. Chem. 277(39):36152-36160(2002)  
Tinkelenberg, A.H., et al. J. Biol. Chem. 275(52):40667-40670(2000)

#### **ARV1 Antibody (N-term) - Citations**

- [Mice lacking ARV1 have reduced signs of metabolic syndrome and non-alcoholic fatty liver disease.](#)