

CD34 Antibody (Center)
Affinity Purified Rabbit Polyclonal Antibody (Pab)
Catalog # AP10666c**Specification**

CD34 Antibody (Center) - Product Information

Application	FC, WB,E
Primary Accession	P28906
Other Accession	NP_001020280
Reactivity	Human
Host	Rabbit
Clonality	Polyclonal
Isotype	Rabbit IgG
Calculated MW	40716
Antigen Region	185-212

CD34 Antibody (Center) - Additional Information**Gene ID** 947**Other Names**

Hematopoietic progenitor cell antigen CD34, CD34, CD34

Target/Specificity

This CD34 antibody is generated from rabbits immunized with a KLH conjugated synthetic peptide between 185-212 amino acids from the Central region of human CD34.

Dilution

FC~~1:10~50

WB~~1:1000

E~~Use at an assay dependent concentration.

Format

Purified polyclonal antibody supplied in PBS with 0.09% (W/V) sodium azide. This antibody is purified through a protein A column, followed by peptide affinity purification.

Storage

Maintain refrigerated at 2-8°C for up to 2 weeks. For long term storage store at -20°C in small aliquots to prevent freeze-thaw cycles.

Precautions

CD34 Antibody (Center) is for research use only and not for use in diagnostic or therapeutic procedures.

CD34 Antibody (Center) - Protein Information**Name** CD34

Function Possible adhesion molecule with a role in early hematopoiesis by mediating the attachment of stem cells to the bone marrow extracellular matrix or directly to stromal cells. Could act as a scaffold for the attachment of lineage specific glycans, allowing stem cells to bind to lectins expressed by stromal cells or other marrow components. Presents carbohydrate ligands to selectins.

Cellular Location

Membrane; Single-pass type I membrane protein.

Tissue Location

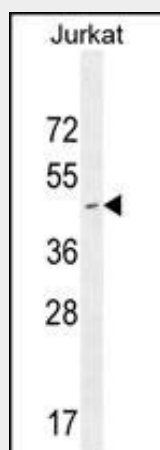
Selectively expressed on hematopoietic progenitor cells and the small vessel endothelium of a variety of tissues

CD34 Antibody (Center) - Protocols

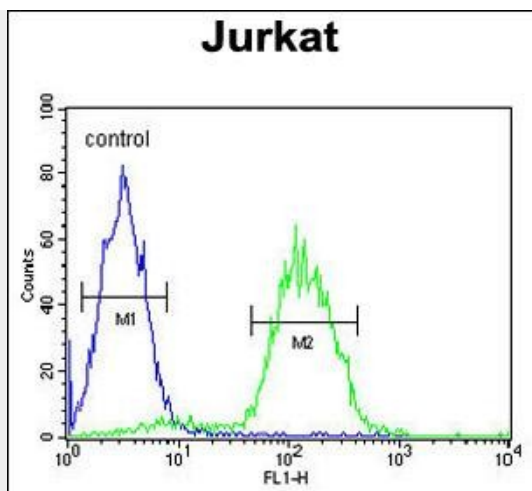
Provided below are standard protocols that you may find useful for product applications.

- [Western Blot](#)
- [Blocking Peptides](#)
- [Dot Blot](#)
- [Immunohistochemistry](#)
- [Immunofluorescence](#)
- [Immunoprecipitation](#)
- [Flow Cytometry](#)
- [Cell Culture](#)

CD34 Antibody (Center) - Images



CD34 Antibody (Center) (Cat. #AP10666c) western blot analysis in Jurkat cell line lysates (35ug/lane). This demonstrates the CD34 antibody detected the CD34 protein (arrow).



CD34 Antibody (Center) (Cat. #AP10666c) flow cytometric analysis of Jurkat cells (right histogram) compared to a negative control cell (left histogram). FITC-conjugated goat-anti-rabbit secondary antibodies were used for the analysis.

CD34 Antibody (Center) - Background

CD34 is a monomeric cell surface antigen with a molecular mass of approximately 110 kD that is selectively expressed on human hematopoietic progenitor cells.

CD34 Antibody (Center) - References

Eijgelsheim, M., et al. Hum. Mol. Genet. 19(19):3885-3894(2010)
 McCalmont, T.H., et al. J. Cutan. Pathol. 37 (9), 923 (2010) :
 Rose, J.E., et al. Mol. Med. 16 (7-8), 247-253 (2010) :
 Cho, S.Y., et al. Cancer Res. 70(8):3402-3410(2010)
 Gluhovschi, C., et al. Folia Histochem. Cytobiol. 48(2):230-236(2010)