

PDE7B Antibody (C-term)
Affinity Purified Rabbit Polyclonal Antibody (Pab)
Catalog # AP10675b

Specification

PDE7B Antibody (C-term) - Product Information

Application	WB,E
Primary Accession	O9NP56
Other Accession	NP_061818.1
Reactivity	Human
Host	Rabbit
Clonality	Polyclonal
Isotype	Rabbit IgG
Calculated MW	51835
Antigen Region	421-450

PDE7B Antibody (C-term) - Additional Information

Gene ID 27115

Other Names

cAMP-specific 3', 5'-cyclic phosphodiesterase 7B, PDE7B

Target/Specificity

This PDE7B antibody is generated from rabbits immunized with a KLH conjugated synthetic peptide between 421-450 amino acids from the C-terminal region of human PDE7B.

Dilution

WB~~1:1000

E~~Use at an assay dependent concentration.

Format

Purified polyclonal antibody supplied in PBS with 0.09% (W/V) sodium azide. This antibody is purified through a protein A column, followed by peptide affinity purification.

Storage

Maintain refrigerated at 2-8°C for up to 2 weeks. For long term storage store at -20°C in small aliquots to prevent freeze-thaw cycles.

Precautions

PDE7B Antibody (C-term) is for research use only and not for use in diagnostic or therapeutic procedures.

PDE7B Antibody (C-term) - Protein Information

Name PDE7B {ECO:0000303|PubMed:10814504}

Function Hydrolyzes the second messenger cAMP, which is a key regulator of many important

physiological processes (PubMed:[10814504](#), PubMed:[10872825](#)). May be involved in the control of cAMP-mediated neural activity and cAMP metabolism in the brain (PubMed:[10814504](#)).

Tissue Location

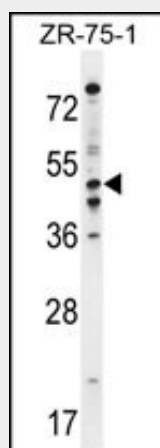
Highly expressed in brain (PubMed:10814504). Also expressed in heart, liver, skeletal muscle and pancreas (PubMed:10814504).

PDE7B Antibody (C-term) - Protocols

Provided below are standard protocols that you may find useful for product applications.

- [Western Blot](#)
- [Blocking Peptides](#)
- [Dot Blot](#)
- [Immunohistochemistry](#)
- [Immunofluorescence](#)
- [Immunoprecipitation](#)
- [Flow Cytometry](#)
- [Cell Culture](#)

PDE7B Antibody (C-term) - Images



PDE7B Antibody (C-term) (Cat. #AP10675b) western blot analysis in ZR-75-1 cell line lysates (35ug/lane). This demonstrates the PDE7B antibody detected the PDE7B protein (arrow).

PDE7B Antibody (C-term) - Background

The 3',5'-cyclic nucleotides cAMP and cGMP function as second messengers in a wide variety of signal transduction pathways. 3',5'-cyclic nucleotide phosphodiesterases (PDEs) catalyze the hydrolysis of cAMP and cGMP to the corresponding 5'-monophosphates and provide a mechanism to downregulate cAMP and cGMP signaling. This gene encodes a cAMP-specific phosphodiesterase, a member of the cyclic nucleotide phosphodiesterase family.

PDE7B Antibody (C-term) - References

Bailey, S.D., et al. Diabetes Care 33(10):2250-2253(2010)
Kestenbaum, B., et al. J. Am. Soc. Nephrol. 21(7):1223-1232(2010)

Joslyn, G., et al. Alcohol. Clin. Exp. Res. 34(5):800-812(2010)
Ikeda, M., et al. Biol. Psychiatry 67(3):263-269(2010)
Talmud, P.J., et al. Am. J. Hum. Genet. 85(5):628-642(2009)