

GPC5 Antibody (N-term)
Affinity Purified Rabbit Polyclonal Antibody (Pab)
Catalog # AP10678a

Specification

GPC5 Antibody (N-term) - Product Information

Application	IHC-P, WB,E
Primary Accession	P78333
Other Accession	Q8CAL5 , NP_004457.1
Reactivity	Human, Mouse
Host	Rabbit
Clonality	Polyclonal
Isotype	Rabbit IgG
Calculated MW	63707
Antigen Region	56-84

GPC5 Antibody (N-term) - Additional Information

Gene ID 2262

Other Names

Glypican-5, Secreted glypican-5, GPC5

Target/Specificity

This GPC5 antibody is generated from rabbits immunized with a KLH conjugated synthetic peptide between 56-84 amino acids from the N-terminal region of human GPC5.

Dilution

IHC-P~~1:50~100

WB~~1:1000

E~~Use at an assay dependent concentration.

Format

Purified polyclonal antibody supplied in PBS with 0.09% (W/V) sodium azide. This antibody is purified through a protein A column, followed by peptide affinity purification.

Storage

Maintain refrigerated at 2-8°C for up to 2 weeks. For long term storage store at -20°C in small aliquots to prevent freeze-thaw cycles.

Precautions

GPC5 Antibody (N-term) is for research use only and not for use in diagnostic or therapeutic procedures.

GPC5 Antibody (N-term) - Protein Information

Name GPC5

Function Cell surface proteoglycan that bears heparan sulfate.

Cellular Location

Cell membrane; Lipid-anchor, GPI- anchor; Extracellular side

Tissue Location

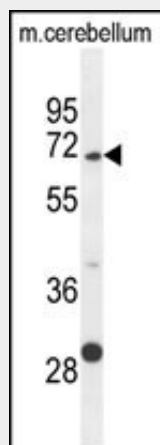
In adult, primarily expressed in the brain. Also detected in fetal brain, lung and liver.

GPC5 Antibody (N-term) - Protocols

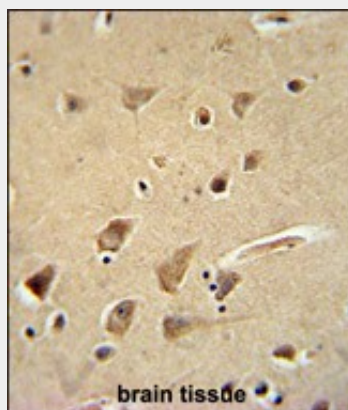
Provided below are standard protocols that you may find useful for product applications.

- [Western Blot](#)
- [Blocking Peptides](#)
- [Dot Blot](#)
- [Immunohistochemistry](#)
- [Immunofluorescence](#)
- [Immunoprecipitation](#)
- [Flow Cytometry](#)
- [Cell Culture](#)

GPC5 Antibody (N-term) - Images



GPC5 Antibody (N-term) (Cat. #AP10678a) western blot analysis in mouse cerebellum tissue lysates (35ug/lane). This demonstrates the GPC5 antibody detected the GPC5 protein (arrow).



GPC5 Antibody (N-term) (Cat. #AP10678a) immunohistochemistry analysis in formalin fixed and

paraffin embedded human brain tissue followed by peroxidase conjugation of the secondary antibody and DAB staining. This data demonstrates the use of the GPC5 Antibody (N-term) for immunohistochemistry. Clinical relevance has not been evaluated.

GPC5 Antibody (N-term) - Background

Cell surface heparan sulfate proteoglycans are composed of a membrane-associated protein core substituted with a variable number of heparan sulfate chains. Members of the glypican-related integral membrane proteoglycan family (GRIPS) contain a core protein anchored to the cytoplasmic membrane via a glycosyl phosphatidylinositol linkage. These proteins may play a role in the control of cell division and growth regulation. [provided by RefSeq].

GPC5 Antibody (N-term) - References

Lorentzen, A.R., et al. J. Neuroimmunol. 226 (1-2), 194-197 (2010) :
Landi, M.T., et al. Lancet Oncol. 11(8):714-716(2010)
Rose, J.E., et al. Mol. Med. 16 (7-8), 247-253 (2010) :
Li, Y., et al. Lancet Oncol. 11(4):321-330(2010)
Arking, D.E., et al. PLoS ONE 5 (3), E9879 (2010) :