

SEL1L Antibody (Center)
Affinity Purified Rabbit Polyclonal Antibody (Pab)
Catalog # AP10685c**Specification**

SEL1L Antibody (Center) - Product Information

Application	WB, FC, IHC-P,E
Primary Accession	O9UBV2
Other Accession	NP_005056.3
Reactivity	Human
Host	Rabbit
Clonality	Polyclonal
Isotype	Rabbit IgG
Calculated MW	88755
Antigen Region	156-182

SEL1L Antibody (Center) - Additional Information**Gene ID** 6400**Other Names**

Protein sel-1 homolog 1, Suppressor of lin-12-like protein 1, Sel-1L, SEL1L, TSA305

Target/Specificity

This SEL1L antibody is generated from rabbits immunized with a KLH conjugated synthetic peptide between 156-182 amino acids from the Central region of human SEL1L.

Dilution

WB~~1:1000

FC~~1:10~50

IHC-P~~1:50~100

E~~Use at an assay dependent concentration.

Format

Purified polyclonal antibody supplied in PBS with 0.09% (W/V) sodium azide. This antibody is purified through a protein A column, followed by peptide affinity purification.

Storage

Maintain refrigerated at 2-8°C for up to 2 weeks. For long term storage store at -20°C in small aliquots to prevent freeze-thaw cycles.

Precautions

SEL1L Antibody (Center) is for research use only and not for use in diagnostic or therapeutic procedures.

SEL1L Antibody (Center) - Protein Information**Name** SEL1L {ECO:0000303|PubMed:10746565}

Function Plays a role in the endoplasmic reticulum quality control (ERQC) system also called ER-associated degradation (ERAD) involved in ubiquitin-dependent degradation of misfolded endoplasmic reticulum proteins (PubMed:[16186509](#), PubMed:[29997207](#), PubMed:[37943610](#), PubMed:[37943617](#)). Enhances SYVN1 stability. Plays a role in LPL maturation and secretion. Required for normal differentiation of the pancreas epithelium, and for normal exocrine function and survival of pancreatic cells. May play a role in Notch signaling.

Cellular Location

Endoplasmic reticulum membrane; Single-pass type I membrane protein

Tissue Location

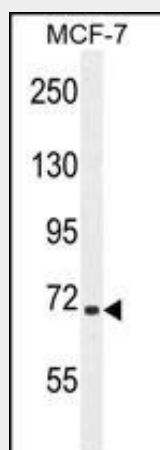
Highly expressed in pancreas.

SEL1L Antibody (Center) - Protocols

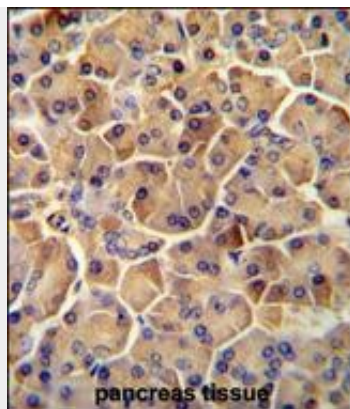
Provided below are standard protocols that you may find useful for product applications.

- [Western Blot](#)
- [Blocking Peptides](#)
- [Dot Blot](#)
- [Immunohistochemistry](#)
- [Immunofluorescence](#)
- [Immunoprecipitation](#)
- [Flow Cytometry](#)
- [Cell Culture](#)

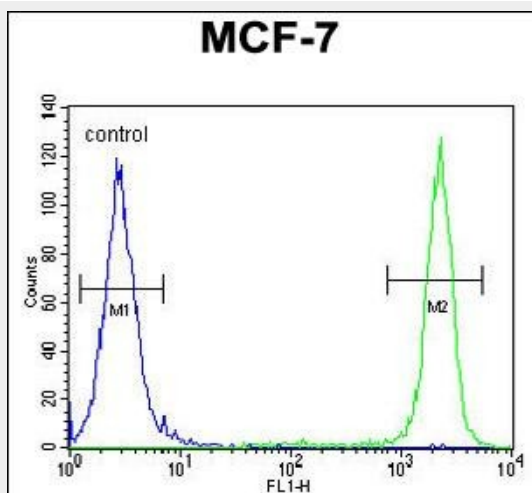
SEL1L Antibody (Center) - Images



SEL1L Antibody (Center) (Cat. #AP10685c) western blot analysis in MCF-7 cell line lysates (35ug/lane). This demonstrates the SEL1L antibody detected the SEL1L protein (arrow).



SEL1L antibody (Center) (Cat. #AP10685c) immunohistochemistry analysis in formalin fixed and paraffin embedded human pancreas tissue followed by peroxidase conjugation of the secondary antibody and DAB staining. This data demonstrates the use of the SEL1L antibody (Center) for immunohistochemistry. Clinical relevance has not been evaluated.



SEL1L Antibody (Center) (Cat. #AP10685c) flow cytometric analysis of MCF-7 cells (right histogram) compared to a negative control cell (left histogram). FITC-conjugated goat-anti-rabbit secondary antibodies were used for the analysis.

SEL1L Antibody (Center) - Background

May play a role in Notch signaling (By similarity). May be involved in the endoplasmic reticulum quality control (ERQC) system also called ER-associated degradation (ERAD) involved in ubiquitin-dependent degradation of misfolded endoplasmic reticulum proteins.

SEL1L Antibody (Center) - References

- Ban, H.J., et al. BMC Genet. 11, 26 (2010) :
- Riemer, J., et al. Proc. Natl. Acad. Sci. U.S.A. 106(35):14831-14836(2009)
- Cormier, J.H., et al. Mol. Cell 34(5):627-633(2009)
- Oresic, K., et al. Biosci. Rep. 29(3):173-181(2009)
- Cattaneo, M., et al. J. Biol. Chem. 284(17):11405-11415(2009)