

**SORBS1 Antibody (Center)**  
**Affinity Purified Rabbit Polyclonal Antibody (Pab)**  
**Catalog # AP10689C****Specification**

---

**SORBS1 Antibody (Center) - Product Information**

Application	IF, WB,E
Primary Accession	<a href="#">Q9BX66</a>
Other Accession	<a href="#">Q62417</a> , <a href="#">NP_006425.2</a>
Reactivity	Human, Hamster
Predicted	Mouse
Host	Rabbit
Clonality	Polyclonal
Isotype	Rabbit IgG
Calculated MW	142513
Antigen Region	866-892

**SORBS1 Antibody (Center) - Additional Information****Gene ID** 10580**Other Names**

Sorbin and SH3 domain-containing protein 1, Ponsin, SH3 domain protein 5, SH3P12, c-Cbl-associated protein, CAP, SORBS1 ([http://www.genenames.org/cgi-bin/gene\\_symbol\\_report?hgnc\\_id=14565](http://www.genenames.org/cgi-bin/gene_symbol_report?hgnc_id=14565))  
HGNC:14565

**Target/Specificity**

This SORBS1 antibody is generated from rabbits immunized with a KLH conjugated synthetic peptide between 866-892 amino acids from the Central region of human SORBS1.

**Dilution**

IF~~1:10~50

WB~~1:1000

**Format**

Purified polyclonal antibody supplied in PBS with 0.09% (W/V) sodium azide. This antibody is purified through a protein A column, followed by peptide affinity purification.

**Storage**

Maintain refrigerated at 2-8°C for up to 2 weeks. For long term storage store at -20°C in small aliquots to prevent freeze-thaw cycles.

**Precautions**

SORBS1 Antibody (Center) is for research use only and not for use in diagnostic or therapeutic procedures.

**SORBS1 Antibody (Center) - Protein Information**

**Name** SORBS1 ([HGNC:14565](#))

**Function** Plays a role in tyrosine phosphorylation of CBL by linking CBL to the insulin receptor. Required for insulin-stimulated glucose transport. Involved in formation of actin stress fibers and focal adhesions (By similarity).

**Cellular Location**

Cell junction, adherens junction. Cell membrane. Cytoplasm, cytoskeleton. Cell junction, focal adhesion. Nucleus. Nucleus matrix. Note=Colocalizes with the Ten-1 ICD form of TENM1 in the nucleus (By similarity). Colocalizes with actin stress fibers. Also detected at the plasma membrane and in neuronal intranuclear inclusions. Colocalized with PXN at focal adhesions during myogenic differentiation.

**Tissue Location**

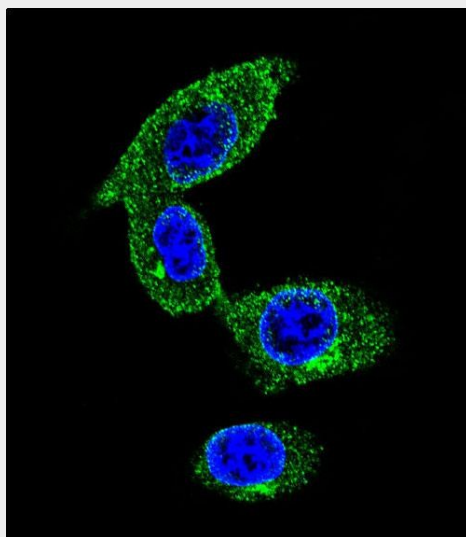
Detected in skeletal muscle (at protein level). Widely expressed with highest levels in heart and skeletal muscle

**SORBS1 Antibody (Center) - Protocols**

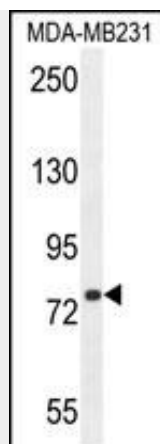
Provided below are standard protocols that you may find useful for product applications.

- [Western Blot](#)
- [Blocking Peptides](#)
- [Dot Blot](#)
- [Immunohistochemistry](#)
- [Immunofluorescence](#)
- [Immunoprecipitation](#)
- [Flow Cytometry](#)
- [Cell Culture](#)

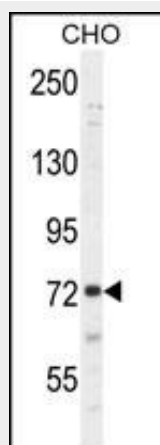
**SORBS1 Antibody (Center) - Images**



Confocal immunofluorescent analysis of SORBS1 Antibody (Center) (Cat#AP10689c) with MDA-MB231 cell followed by Alexa Fluor 488-conjugated goat anti-rabbit IgG (green). DAPI was used to stain the cell nuclear (blue).



SORBS1 Antibody (Center) (Cat. #AP10689c) western blot analysis in MDA-MB231 cell line lysates (35ug/lane). This demonstrates the SORBS1 antibody detected the SORBS1 protein (arrow).



SORBS1 Antibody (Center) (Cat. #AP10689c) western blot analysis in CHO cell line lysates (35ug/lane). This demonstrates the SORBS1 antibody detected the SORBS1 protein (arrow).

#### **SORBS1 Antibody (Center) - Background**

Plays a role in tyrosine phosphorylation of CBL by linking CBL to the insulin receptor. Required for insulin-stimulated glucose transport. Involved in formation of actin stress fibers and focal adhesions (By similarity).

#### **SORBS1 Antibody (Center) - References**

Rose, J.E., et al. Mol. Med. 16 (7-8), 247-253 (2010) ; Joslyn, G., et al. Alcohol. Clin. Exp. Res. 34(5):800-812(2010) Gehmlich, K., et al. Eur. J. Cell Biol. 89(5):351-364(2010) Yamada, Y., et al. Hypertens. Res. 32(5):325-331(2009) Fernow, I., et al. BMC Cell Biol. 10, 80 (2009) :

#### **SORBS1 Antibody (Center) - Citations**

- [Glycoprotein screening in colorectal cancer based on differentially expressed Tn antigen.](#)