

AMY2B Antibody (N-term)
Affinity Purified Rabbit Polyclonal Antibody (Pab)
Catalog # AP10694a**Specification**

AMY2B Antibody (N-term) - Product Information

Application	WB, IF, FC, IHC-P,E
Primary Accession	P19961
Other Accession	P04746 , P04745 , NP_066188.1
Reactivity	Human
Host	Rabbit
Clonality	Polyclonal
Isotype	Rabbit IgG
Calculated MW	57710
Antigen Region	74-100

AMY2B Antibody (N-term) - Additional Information**Gene ID** 280**Other Names**

Alpha-amylase 2B, 4-alpha-D-glucan glucanohydrolase 2B, Carcinoid alpha-amylase, AMY2B

Target/Specificity

This AMY2B antibody is generated from rabbits immunized with a KLH conjugated synthetic peptide between 74-100 amino acids from the N-terminal region of human AMY2B.

Dilution

WB~~1:1000
IF~~1:10~50
FC~~1:10~50
IHC-P~~1:50~100
E~~Use at an assay dependent concentration.

Format

Purified polyclonal antibody supplied in PBS with 0.09% (W/V) sodium azide. This antibody is purified through a protein A column, followed by peptide affinity purification.

Storage

Maintain refrigerated at 2-8°C for up to 2 weeks. For long term storage store at -20°C in small aliquots to prevent freeze-thaw cycles.

Precautions

AMY2B Antibody (N-term) is for research use only and not for use in diagnostic or therapeutic procedures.

AMY2B Antibody (N-term) - Protein Information

Name AMY2B

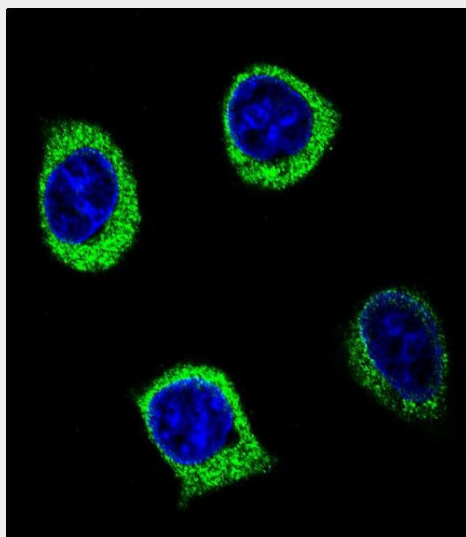
Cellular Location
Secreted.

AMY2B Antibody (N-term) - Protocols

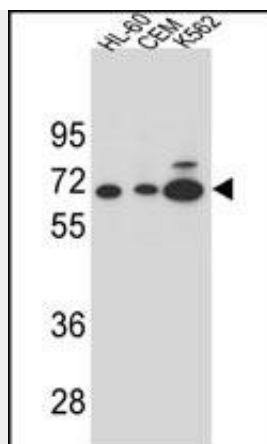
Provided below are standard protocols that you may find useful for product applications.

- [Western Blot](#)
- [Blocking Peptides](#)
- [Dot Blot](#)
- [Immunohistochemistry](#)
- [Immunofluorescence](#)
- [Immunoprecipitation](#)
- [Flow Cytometry](#)
- [Cell Culture](#)

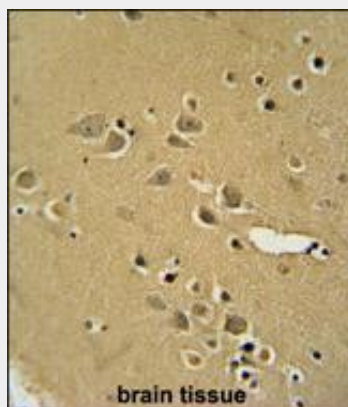
AMY2B Antibody (N-term) - Images



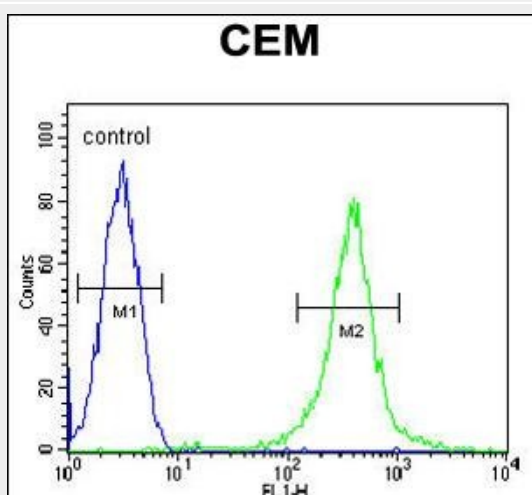
Confocal immunofluorescent analysis of AMY2B Antibody (N-term) (Cat#AP10694a) with 293 cell followed by Alexa Fluor 488-conjugated goat anti-rabbit IgG (green). DAPI was used to stain the cell nuclear (blue).



AMY2B Antibody (N-term) (Cat. #AP10694a) western blot analysis in HL-60,CEM and K562 cell line lysates (35ug/lane).This demonstrates the AMY2B antibody detected the AMY2B protein (arrow).



AMY2B antibody (N-term) (Cat. #AP10694a) immunohistochemistry analysis in formalin fixed and paraffin embedded human brain tissue followed by peroxidase conjugation of the secondary antibody and DAB staining. This data demonstrates the use of the AMY2B antibody (N-term) for immunohistochemistry. Clinical relevance has not been evaluated.



AMY2B Antibody (N-term) (Cat. #AP10694a) flow cytometric analysis of CEM cells (right histogram) compared to a negative control cell (left histogram).FITC-conjugated goat-anti-rabbit secondary antibodies were used for the analysis.

AMY2B Antibody (N-term) - Background

Amylases are secreted proteins that hydrolyze 1,4-alpha-glucoside bonds in oligosaccharides and polysaccharides, and thus catalyze the first step in digestion of dietary starch and glycogen. The human genome has a cluster of several amylase genes that are expressed at high levels in either salivary gland or pancreas. This gene encodes an amylase isoenzyme produced by the pancreas.

AMY2B Antibody (N-term) - References

Baltova, S.D. Folia Med (Plovdiv) 47(1):37-41(2005)
Fortna, A., et al. PLoS Biol. 2 (7), E207 (2004) :
Koyama, I., et al. Clin. Chim. Acta 309(1):73-83(2001)
Aughsteen, A.A. Saudi Med J 22(5):410-415(2001)
Omichi, K., et al. Biochim. Biophys. Acta 1203(2):224-229(1993)