

COL18A1 Antibody (Center)
Affinity Purified Rabbit Polyclonal Antibody (Pab)
Catalog # AP10706c**Specification**

COL18A1 Antibody (Center) - Product Information

Application	IHC-P, WB,E
Primary Accession	P39060
Other Accession	NP_085059.2
Reactivity	Human, Mouse
Host	Rabbit
Clonality	Polyclonal
Isotype	Rabbit IgG
Calculated MW	178188
Antigen Region	1311-1339

COL18A1 Antibody (Center) - Additional Information**Gene ID** 80781**Other Names**

Collagen alpha-1(XVIII) chain, Endostatin, COL18A1

Target/Specificity

This COL18A1 antibody is generated from rabbits immunized with a KLH conjugated synthetic peptide between 1311-1339 amino acids from the Central region of human COL18A1.

Dilution

IHC-P~~1:50~100

WB~~1:1000

E~~Use at an assay dependent concentration.

Format

Purified polyclonal antibody supplied in PBS with 0.09% (W/V) sodium azide. This antibody is purified through a protein A column, followed by peptide affinity purification.

Storage

Maintain refrigerated at 2-8°C for up to 2 weeks. For long term storage store at -20°C in small aliquots to prevent freeze-thaw cycles.

Precautions

COL18A1 Antibody (Center) is for research use only and not for use in diagnostic or therapeutic procedures.

COL18A1 Antibody (Center) - Protein Information**Name** COL18A1 ([HGNC:2195](#))

Function Probably plays a major role in determining the retinal structure as well as in the closure of the neural tube.

Cellular Location

Secreted, extracellular space, extracellular matrix. Secreted, extracellular space, extracellular matrix, basement membrane {ECO:0000250|UniProtKB:P39061} [Endostatin]: Secreted. Secreted, extracellular space, extracellular matrix, basement membrane

Tissue Location

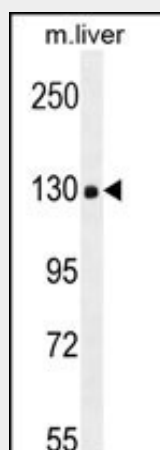
Detected in placenta (at protein level) (PubMed:32337544). Present in multiple organs with highest levels in liver, lung and kidney.

COL18A1 Antibody (Center) - Protocols

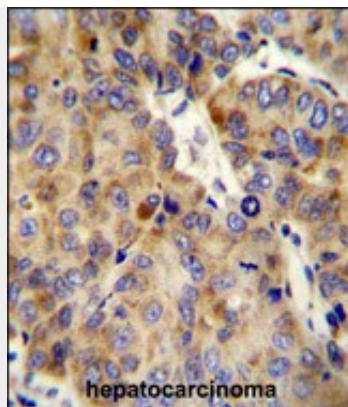
Provided below are standard protocols that you may find useful for product applications.

- [Western Blot](#)
- [Blocking Peptides](#)
- [Dot Blot](#)
- [Immunohistochemistry](#)
- [Immunofluorescence](#)
- [Immunoprecipitation](#)
- [Flow Cytometry](#)
- [Cell Culture](#)

COL18A1 Antibody (Center) - Images



COL18A1 Antibody (Center) (Cat. #AP10706c) western blot analysis in mouse liver tissue lysates (35ug/lane). This demonstrates the COL18A1 antibody detected the COL18A1 protein (arrow).



COL18A1 Antibody (Center) (Cat. #AP10706c) immunohistochemistry analysis in formalin fixed and paraffin embedded human hepatocarcinoma followed by peroxidase conjugation of the secondary antibody and DAB staining. This data demonstrates the use of the COL18A1 Antibody (Center) for immunohistochemistry. Clinical relevance has not been evaluated.

COL18A1 Antibody (Center) - Background

COL18A1 is the alpha chain of type XVIII collagen. This collagen is one of the multiplexins, extracellular matrix proteins that contain multiple triple-helix domains (collagenous domains) interrupted by non-collagenous domains. The proteolytically produced C-terminal fragment of type XVIII collagen is endostatin, a potent antiangiogenic protein. Mutations in this gene are associated with Knobloch syndrome. The main features of this syndrome involve retinal abnormalities, so type XVIII collagen may play an important role in retinal structure and in neural tube closure.

COL18A1 Antibody (Center) - References

Hamano, Y., et al. J. Am. Soc. Nephrol. 21(9):1445-1455(2010)
Roberts, K.E., et al. Gastroenterology 139(1):130-139(2010)
Lee, K.S., et al. Tumour Biol. 31(3):165-170(2010)
Faye, C., et al. Biochem. J. 427(3):467-475(2010)
Polikarpova, S.B., et al. Bull. Exp. Biol. Med. 148(4):634-637(2009)