

**MPP1 Antibody (Center)**  
**Affinity Purified Rabbit Polyclonal Antibody (Pab)**  
**Catalog # AP10708c**

**Specification**

---

**MPP1 Antibody (Center) - Product Information**

Application	FC, IHC-P, WB,E
Primary Accession	<a href="#">Q00013</a>
Other Accession	<a href="#">NP_002427.1</a>
Reactivity	Human
Host	Rabbit
Clonality	Polyclonal
Isotype	Rabbit IgG
Calculated MW	52296
Antigen Region	301-327

**MPP1 Antibody (Center) - Additional Information**

**Gene ID** 4354

**Other Names**

55 kDa erythrocyte membrane protein, p55, Membrane protein, palmitoylated 1, MPP1, DXS552E, EMP55

**Target/Specificity**

This MPP1 antibody is generated from rabbits immunized with a KLH conjugated synthetic peptide between 301-327 amino acids from the Central region of human MPP1.

**Dilution**

FC~~1:10~50

IHC-P~~1:50~100

WB~~1:1000

E~~Use at an assay dependent concentration.

**Format**

Purified polyclonal antibody supplied in PBS with 0.09% (W/V) sodium azide. This antibody is purified through a protein A column, followed by peptide affinity purification.

**Storage**

Maintain refrigerated at 2-8°C for up to 2 weeks. For long term storage store at -20°C in small aliquots to prevent freeze-thaw cycles.

**Precautions**

MPP1 Antibody (Center) is for research use only and not for use in diagnostic or therapeutic procedures.

**MPP1 Antibody (Center) - Protein Information**

**Name** MPP1

**Synonyms** DXS552E, EMP55

**Function** Essential regulator of neutrophil polarity. Regulates neutrophil polarization by regulating AKT1 phosphorylation through a mechanism that is independent of PIK3CG activity (By similarity).

**Cellular Location**

Cell membrane; Lipid-anchor. Cell projection, stereocilium {ECO:0000250|UniProtKB:P70290}. Note=Colocalizes with WHRN at stereocilium tip during hair cell development (By similarity) Colocalizes with PALS1 in the retina, at the outer limiting membrane (OLM) (By similarity). Colocalizes with WHRN in the retina, at the outer limiting membrane (OLM), outer plexiform layer (OPL), basal bodies and at the connecting cilium (CC) (By similarity). Colocalizes with NF2 in non-myelin-forming Schwann cells (PubMed:19144871) {ECO:0000250|UniProtKB:P70290, ECO:0000269|PubMed:19144871}

**Tissue Location**

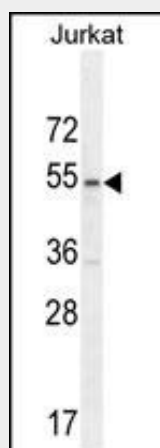
Ubiquitous..

**MPP1 Antibody (Center) - Protocols**

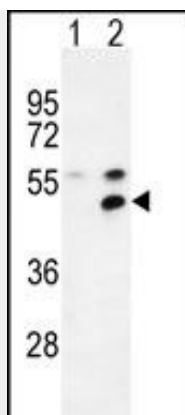
Provided below are standard protocols that you may find useful for product applications.

- [Western Blot](#)
- [Blocking Peptides](#)
- [Dot Blot](#)
- [Immunohistochemistry](#)
- [Immunofluorescence](#)
- [Immunoprecipitation](#)
- [Flow Cytometry](#)
- [Cell Culture](#)

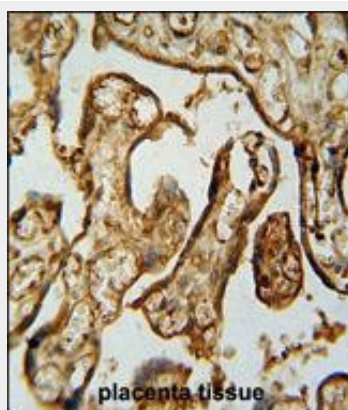
**MPP1 Antibody (Center) - Images**



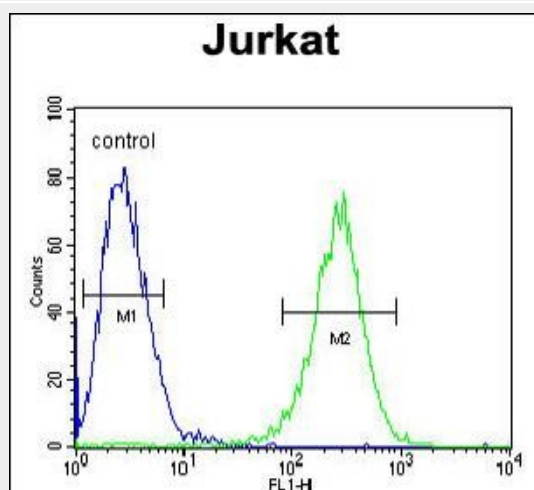
MPP1 Antibody (Center) (Cat. #AP10708c) western blot analysis in Jurkat cell line lysates (35ug/lane). This demonstrates the MPP1 antibody detected the MPP1 protein (arrow).



Western blot analysis of MPP1 (arrow) using rabbit polyclonal MPP1 Antibody (Center) (Cat. #AP10708c). 293 cell lysates (2 ug/lane) either nontransfected (Lane 1) or transiently transfected (Lane 2) with the MPP1 gene.



MPP1 Antibody (C-term) (Cat. #AP10708c) immunohistochemistry analysis in formalin fixed and paraffin embedded human placenta tissue followed by peroxidase conjugation of the secondary antibody and DAB staining. This data demonstrates the use of the MPP1 Antibody (C-term) for immunohistochemistry. Clinical relevance has not been evaluated.



MPP1 Antibody (Center) (Cat. #AP10708c) flow cytometric analysis of Jurkat cells (right histogram) compared to a negative control cell (left histogram). FITC-conjugated goat-anti-rabbit secondary antibodies were used for the analysis.

#### **MPP1 Antibody (Center) - Background**

This gene encodes the prototype of the membrane-associated guanylate kinase (MAGUK) family proteins. MAGUKs interact with the cytoskeleton and regulate cell proliferation, signaling pathways, and intercellular junctions. The encoded protein is an extensively palmitoylated membrane phosphoprotein containing a PDZ domain, a Src homology 3 (SH3) motif, and a guanylate kinase domain. This gene product interacts with various cytoskeletal proteins and cell junctional proteins in different tissue and cell types, and may be involved in the regulation of cell shape, hair cell development, neural patterning of the retina, and apico-basal polarity and tumor suppression pathways in non-erythroid cells. Multiple transcript variants encoding different isoforms have been found for this gene.

#### **MPP1 Antibody (Center) - References**

Seo, P.S., et al. Exp. Biol. Med. (Maywood) 234(3):255-262(2009)  
Seo, P.S., et al. Biochim. Biophys. Acta 1793(2):281-289(2009)  
Gosens, I., et al. Hum. Mol. Genet. 16(16):1993-2003(2007)  
Kusunoki, H., et al. Proteins 64(3):804-807(2006)  
Funke, L., et al. Annu. Rev. Biochem. 74, 219-245 (2005) :