

**SERPINA6 Antibody (Center)**  
**Affinity Purified Rabbit Polyclonal Antibody (Pab)**  
**Catalog # AP10736c**

**Specification**

---

**SERPINA6 Antibody (Center) - Product Information**

Application	IHC-P, IF, WB,E
Primary Accession	<a href="#">P08185</a>
Other Accession	<a href="#">NP_001747.2</a>
Reactivity	Human
Host	Rabbit
Clonality	Polyclonal
Isotype	Rabbit IgG
Antigen Region	197-225

**SERPINA6 Antibody (Center) - Additional Information**

**Gene ID** 866

**Other Names**

Corticosteroid-binding globulin, CBG, Serpin A6, Transcortin, SERPINA6, CBG

**Target/Specificity**

This SERPINA6 antibody is generated from rabbits immunized with a KLH conjugated synthetic peptide between 197-225 amino acids from the Central region of human SERPINA6.

**Dilution**

IHC-P~~1:100

IF~~1:10~50

WB~~1:1000

E~~Use at an assay dependent concentration.

**Format**

Purified polyclonal antibody supplied in PBS with 0.09% (W/V) sodium azide. This antibody is purified through a protein A column, followed by peptide affinity purification.

**Storage**

Maintain refrigerated at 2-8°C for up to 2 weeks. For long term storage store at -20°C in small aliquots to prevent freeze-thaw cycles.

**Precautions**

SERPINA6 Antibody (Center) is for research use only and not for use in diagnostic or therapeutic procedures.

**SERPINA6 Antibody (Center) - Protein Information**

**Name** SERPINA6

### Synonyms CBG

**Function** Major transport protein for glucocorticoids and progestins in the blood of almost all vertebrate species.

### Cellular Location

Secreted.

### Tissue Location

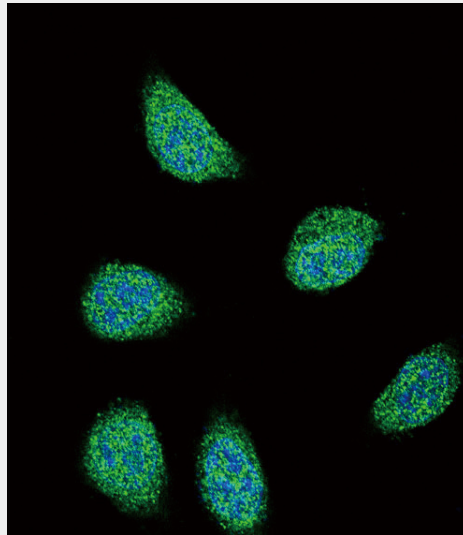
Plasma; synthesized in liver. Has also been identified in a number of glyocorticoid responsive cells

### SERPINA6 Antibody (Center) - Protocols

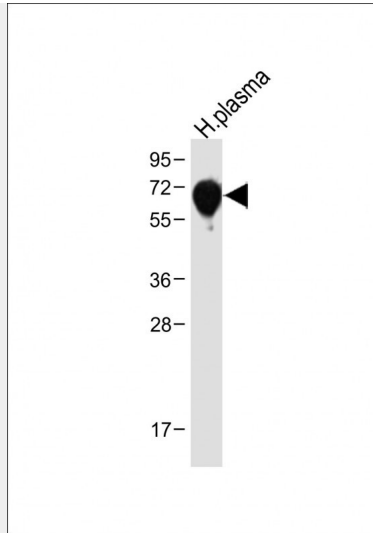
Provided below are standard protocols that you may find useful for product applications.

- [Western Blot](#)
- [Blocking Peptides](#)
- [Dot Blot](#)
- [Immunohistochemistry](#)
- [Immunofluorescence](#)
- [Immunoprecipitation](#)
- [Flow Cytometry](#)
- [Cell Culture](#)

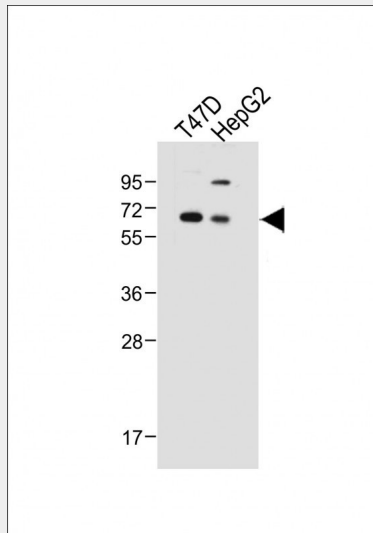
### SERPINA6 Antibody (Center) - Images



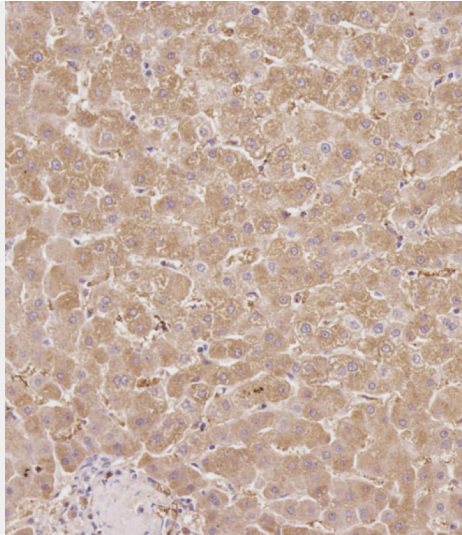
Confocal immunofluorescent analysis of SERPINA6 Antibody (Center) (Cat#AP10736c) with 293 cell followed by Alexa Fluor 488-conjugated goat anti-rabbit IgG (green). DAPI was used to stain the cell nuclear (blue).



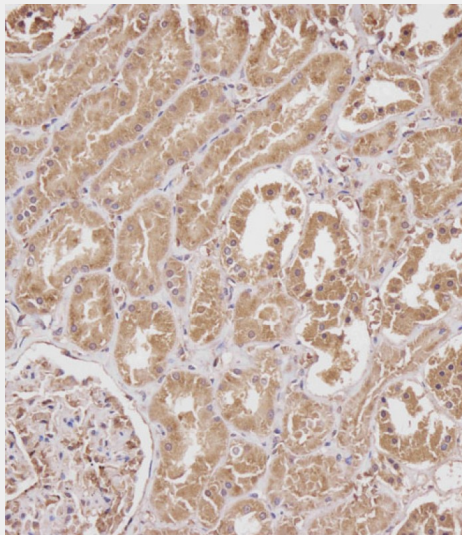
Anti-SERPINA6 Antibody (Center) at 1:1000 dilution + Human plasma tissue lysate Lysates/proteins at 20 µg per lane. Secondary Goat Anti-Rabbit IgG, (H+L), Peroxidase conjugated at 1/10000 dilution. Predicted band size : 45 kDa Blocking/Dilution buffer: 5% NFDM/TBST.



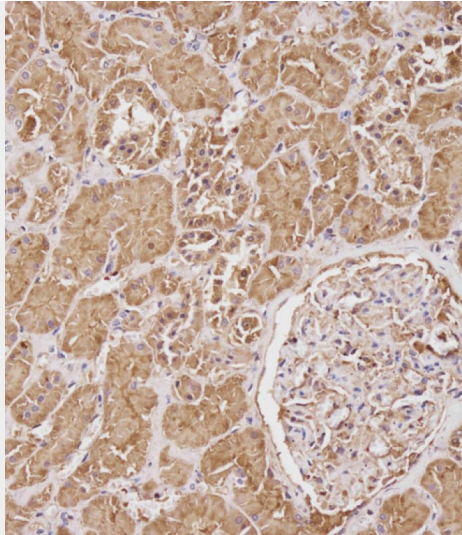
All lanes : Anti-SERPINA6 Antibody (Center) at 1:1000 dilution Lane 1: T47D whole cell lysate Lane 2: HepG2 whole cell lysate Lysates/proteins at 20 µg per lane. Secondary Goat Anti-Rabbit IgG, (H+L), Peroxidase conjugated at 1/10000 dilution. Predicted band size : 45 kDa Blocking/Dilution buffer: 5% NFDM/TBST.



Immunohistochemical analysis of AP10736C on paraffin-embedded Human liver tissue. Tissue was fixed with formaldehyde at room temperature. Heat induced epitope retrieval was performed by EDTA buffer (pH9. 0). Samples were incubated with primary antibody(1:100) for 1 hour at room temperature. Undiluted CRF Anti-Polyvalent HRP Polymer antibody was used as the secondary antibody.



Immunohistochemical analysis of AP10736C on paraffin-embedded Human kidney tissue. Tissue was fixed with formaldehyde at room temperature. Heat induced epitope retrieval was performed by EDTA buffer (pH9. 0). Samples were incubated with primary antibody(1:100) for 1 hour at room temperature. Undiluted CRF Anti-Polyvalent HRP Polymer antibody was used as the secondary antibody.



Immunohistochemical analysis of AP10736C on paraffin-embedded Human kidney tissue. Tissue was fixed with formaldehyde at room temperature. Heat induced epitope retrieval was performed by EDTA buffer (pH9. 0). Samples were incubated with primary antibody(1:100) for 1 hour at room temperature. Undiluted CRF Anti-Polyvalent HRP Polymer antibody was used as the secondary antibody.

#### **SERPINA6 Antibody (Center) - Background**

This gene encodes an alpha-globulin protein with corticosteroid-binding properties. This is the major transport protein for glucorticoids and progestins in the blood of most vertebrates. The gene localizes to a chromosomal region containing several closely related serine protease inhibitors which may have evolved by duplication events.

#### **SERPINA6 Antibody (Center) - References**

Bailey, S.D., et al. Diabetes Care (2010) In press :  
Rose, J.E., et al. Mol. Med. 16 (7-8), 247-253 (2010) :  
Holliday, K.L., et al. J Psychosom Res 68(5):469-474(2010)  
Braun, B.C., et al. J. Steroid Biochem. Mol. Biol. 120(1):30-37(2010)  
Lewis, J.G., et al. Horm. Metab. Res. 42(4):274-279(2010)