

ORMDL3 Antibody (Center)
Affinity Purified Rabbit Polyclonal Antibody (Pab)
Catalog # AP10739c

Specification

ORMDL3 Antibody (Center) - Product Information

Application	WB,E
Primary Accession	Q8N138 , Q9P0S3 , Q53FV1
Other Accession	Q6QI25 , Q9CPZ6 , Q5XJR6 , Q0VD15 , Q9CQZ0 , Q5E972 , Q5XH57 , Q8JFB7 , Q29RO9 , NP_644809.1 , Q8JFB7 , Q9P0S3 , Q53FV1 , Q8N138
Reactivity	Human, Mouse
Predicted	Bovine, Zebrafish, Xenopus, Rat
Host	Rabbit
Clonality	Polyclonal
Isotype	Rabbit IgG
Antigen Region	53-81

ORMDL3 Antibody (Center) - Additional Information

Other Names

ORM1-like protein 3, ORMDL3

Target/Specificity

This ORMDL3 antibody is generated from rabbits immunized with a KLH conjugated synthetic peptide between 53-81 amino acids from the Central region of human ORMDL3.

Dilution

WB~~1:1000

E~~Use at an assay dependent concentration.

Format

Purified polyclonal antibody supplied in PBS with 0.09% (W/V) sodium azide. This antibody is purified through a protein A column, followed by peptide affinity purification.

Storage

Maintain refrigerated at 2-8°C for up to 2 weeks. For long term storage store at -20°C in small aliquots to prevent freeze-thaw cycles.

Precautions

ORMDL3 Antibody (Center) is for research use only and not for use in diagnostic or therapeutic procedures.

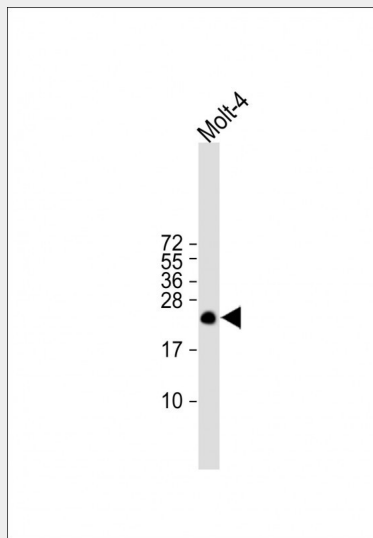
ORMDL3 Antibody (Center) - Protein Information

ORMDL3 Antibody (Center) - Protocols

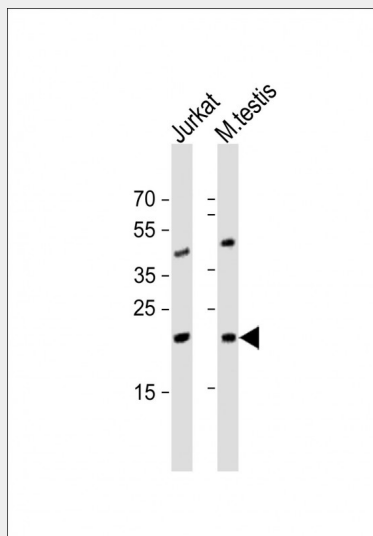
Provided below are standard protocols that you may find useful for product applications.

- [Western Blot](#)
- [Blocking Peptides](#)
- [Dot Blot](#)
- [Immunohistochemistry](#)
- [Immunofluorescence](#)
- [Immunoprecipitation](#)
- [Flow Cytometry](#)
- [Cell Culture](#)

ORMDL3 Antibody (Center) - Images



All lanes : Anti-ORMDL3 Antibody (Center) at 1:1000 dilution Lane 1: Molt-4 whole cell lysate Lysates/proteins at 20 μ g per lane. Secondary Goat Anti-Rabbit IgG, (H+L), Peroxidase conjugated at 1/10000 dilution. Observed band size : 23 kDa Blocking/Dilution buffer: 5% NFDM/TBST.



All lanes : Anti-ORMDL3 Antibody (Center) at 1:1000 dilution Lane 1: Jurkat whole cell lysate Lane 2: mouse testis lysate Lysates/proteins at 20 μ g per lane. Secondary Goat Anti-Rabbit IgG, (H+L),

Peroxidase conjugated at 1/10000 dilution. Predicted band size : 17 kDa Blocking/Dilution buffer: 5% NFDM/TBST.

ORMDL3 Antibody (Center) - Background

Negative regulator of sphingolipid synthesis. May indirectly regulate endoplasmic reticulum-mediated Ca(+2) signaling.

ORMDL3 Antibody (Center) - References

Fransen, K., et al. Hum. Mol. Genet. 19(17):3482-3488(2010) Liu, X., et al. Nat. Genet. 42(8):658-660(2010) Halapi, E., et al. Eur. J. Hum. Genet. 18(8):902-908(2010) Dobbins, S.E., et al. Int. J. Cancer (2010) In press : McGovern, D.P., et al. Nat. Genet. 42(4):332-337(2010)

ORMDL3 Antibody (Center) - Citations

- [ORMDL3 regulates poly I:C induced inflammatory responses in airway epithelial cells](#)
- [The ORMDL3 Asthma Gene Regulates ICAM1 and has Multiple Effects on Cellular Inflammation.](#)
- [Staurosporines decrease ORMDL proteins and enhance sphingomyelin synthesis resulting in depletion of plasmalemmal phosphatidylserine.](#)
- [ORMDL proteins regulate ceramide levels during sterile inflammation.](#)
- [ORMDL3 modulates store-operated calcium entry and lymphocyte activation.](#)
- [ORMDL3 is an inducible lung epithelial gene regulating metalloproteases, chemokines, OAS, and ATF6.](#)