

RPH3AL Antibody (C-term)
Affinity Purified Rabbit Polyclonal Antibody (Pab)
Catalog # AP10741b**Specification**

RPH3AL Antibody (C-term) - Product Information

Application	IHC-P, WB,E
Primary Accession	O9UNE2
Other Accession	NP_008918.1
Reactivity	Human
Host	Rabbit
Clonality	Polyclonal
Isotype	Rabbit IgG
Calculated MW	34464
Antigen Region	208-237

RPH3AL Antibody (C-term) - Additional Information**Gene ID** 9501**Other Names**

Rab effector Noc2, No C2 domains protein, Rabphilin-3A-like protein, RPH3AL, NOC2

Target/Specificity

This RPH3AL antibody is generated from rabbits immunized with a KLH conjugated synthetic peptide between 208-237 amino acids from the C-terminal region of human RPH3AL.

Dilution

IHC-P~~1:50~100

WB~~1:1000

E~~Use at an assay dependent concentration.

Format

Purified polyclonal antibody supplied in PBS with 0.09% (W/V) sodium azide. This antibody is purified through a protein A column, followed by peptide affinity purification.

Storage

Maintain refrigerated at 2-8°C for up to 2 weeks. For long term storage store at -20°C in small aliquots to prevent freeze-thaw cycles.

Precautions

RPH3AL Antibody (C-term) is for research use only and not for use in diagnostic or therapeutic procedures.

RPH3AL Antibody (C-term) - Protein Information**Name** RPH3AL

Synonyms NOC2

Function Rab GTPase effector involved in the late steps of regulated exocytosis, both in endocrine and exocrine cells (By similarity). Acts as a potential RAB3B effector protein in epithelial cells.

Cellular Location

Cytoplasm. Cytoplasmic vesicle, secretory vesicle membrane. Note=Recruited to the vesicle membrane in a GTP- and RAB3B-dependent manner in epithelial cells

Tissue Location

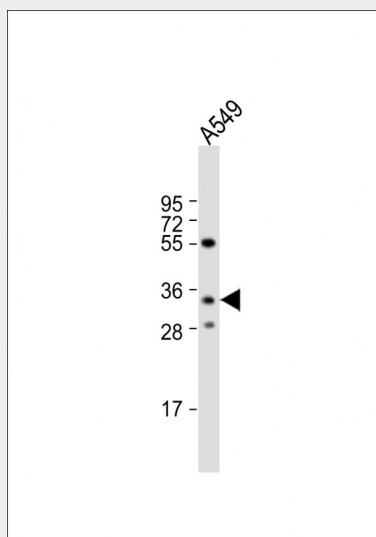
Moderate to high levels of expression in thyroid, ovary, stomach, heart, pancreas, skeletal muscle, kidney and liver Also detected in epithelial cells.

RPH3AL Antibody (C-term) - Protocols

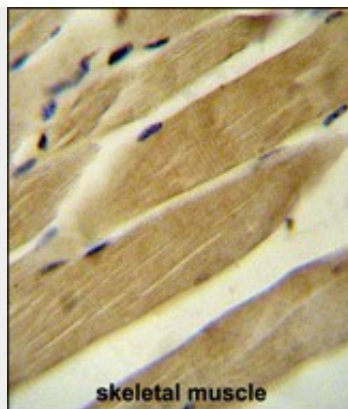
Provided below are standard protocols that you may find useful for product applications.

- [Western Blot](#)
- [Blocking Peptides](#)
- [Dot Blot](#)
- [Immunohistochemistry](#)
- [Immunofluorescence](#)
- [Immunoprecipitation](#)
- [Flow Cytometry](#)
- [Cell Culture](#)

RPH3AL Antibody (C-term) - Images



Anti-RPH3AL Antibody (C-term) at 1:1000 dilution + A549 whole cell lysate Lysates/proteins at 20 µg per lane. Secondary Goat Anti-Rabbit IgG, (H+L), Peroxidase conjugated at 1/10000 dilution. Predicted band size : 34 kDa Blocking/Dilution buffer: 5% NFDm/TBST.



RPH3AL Antibody (C-term) (Cat. #AP10741b) immunohistochemistry analysis in formalin fixed and paraffin embedded human skeletal muscle followed by peroxidase conjugation of the secondary antibody and DAB staining. This data demonstrates the use of the RPH3AL Antibody (C-term) for immunohistochemistry. Clinical relevance has not been evaluated.

RPH3AL Antibody (C-term) - Background

The protein encoded by this gene plays a direct regulatory role in calcium-ion-dependent exocytosis in both endocrine and exocrine cells and plays a key role in insulin secretion by pancreatic cells. This gene is likely a tumor suppressor. Alternative splicing results in multiple transcript variants encoding distinct isoforms.

RPH3AL Antibody (C-term) - References

Rose, J. Phd, et al. Mol. Med. (2010) In press : Shanmugam, C., et al. Biotech Histochem 84(2):39-45(2009) Katkoori, V.R., et al. Front. Biosci. 13, 1050-1061 (2008) : Matsumoto, M., et al. Proc. Natl. Acad. Sci. U.S.A. 101(22):8313-8318(2004) Manabe, S., et al. Biochem. Biophys. Res. Commun. 316(1):218-225(2004)