

TMEM66 Antibody (N-term)
Affinity Purified Rabbit Polyclonal Antibody (Pab)
Catalog # AP10746a

Specification

TMEM66 Antibody (N-term) - Product Information

Application	WB, FC,E
Primary Accession	Q96BY9
Other Accession	NP_057211.4
Reactivity	Human, Mouse
Host	Rabbit
Clonality	Polyclonal
Isotype	Rabbit IgG
Calculated MW	36975
Antigen Region	33-62

TMEM66 Antibody (N-term) - Additional Information

Gene ID 51669

Other Names

Store-operated calcium entry-associated regulatory factor, SARAF, SOCE-associated regulatory factor, HBV X-transactivated gene 3 protein, HBV XAg-transactivated protein 3, Protein FOAP-7, Transmembrane protein 66, SARAF, TMEM66, XTP3

Target/Specificity

This TMEM66 antibody is generated from rabbits immunized with a KLH conjugated synthetic peptide between 33-62 amino acids from the N-terminal region of human TMEM66.

Dilution

WB~~1:1000

FC~~1:10~50

E~~Use at an assay dependent concentration.

Format

Purified polyclonal antibody supplied in PBS with 0.09% (W/V) sodium azide. This antibody is purified through a protein A column, followed by peptide affinity purification.

Storage

Maintain refrigerated at 2-8°C for up to 2 weeks. For long term storage store at -20°C in small aliquots to prevent freeze-thaw cycles.

Precautions

TMEM66 Antibody (N-term) is for research use only and not for use in diagnostic or therapeutic procedures.

TMEM66 Antibody (N-term) - Protein Information

Name SARAF

Synonyms TMEM66, XTP3

Function Negative regulator of store-operated Ca^{2+} entry (SOCE) involved in protecting cells from Ca^{2+} overfilling. In response to cytosolic Ca^{2+} elevation after endoplasmic reticulum Ca^{2+} refilling, promotes a slow inactivation of STIM (STIM1 or STIM2)- dependent SOCE activity: possibly act by facilitating the deoligomerization of STIM to efficiently turn off ORAI when the endoplasmic reticulum lumen is filled with the appropriate Ca^{2+} levels, and thus preventing the overload of the cell with excessive Ca^{2+} ions.

Cellular Location

Endoplasmic reticulum membrane; Single-pass type I membrane protein. Note=Translocates to the endoplasmic reticulum-plasma membrane (ER-PM) region in a STIM1-dependent manner following cytosolic Ca^{2+} elevation

Tissue Location

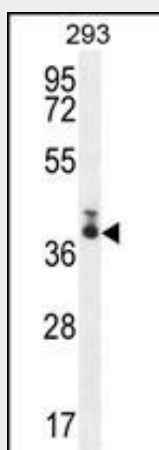
Highly expressed in macrophages. {ECO:0000269|Ref.2}

TMEM66 Antibody (N-term) - Protocols

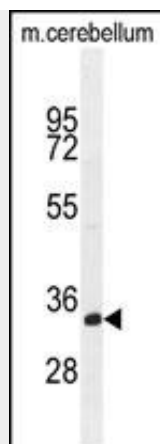
Provided below are standard protocols that you may find useful for product applications.

- [Western Blot](#)
- [Blocking Peptides](#)
- [Dot Blot](#)
- [Immunohistochemistry](#)
- [Immunofluorescence](#)
- [Immunoprecipitation](#)
- [Flow Cytometry](#)
- [Cell Culture](#)

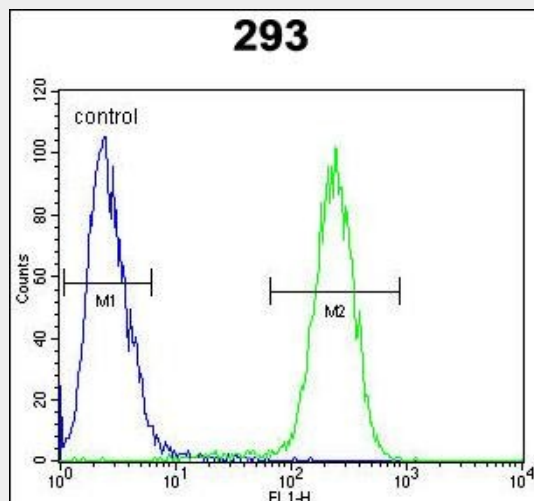
TMEM66 Antibody (N-term) - Images



TMEM66 Antibody (N-term) (Cat. #AP10746a) western blot analysis in 293 cell line lysates (35ug/lane). This demonstrates the TMEM66 antibody detected the TMEM66 protein (arrow).



TMEM66 Antibody (N-term) (Cat. #AP10746a) western blot analysis in mouse cerebellum tissue lysates (35ug/lane). This demonstrates the TMEM66 antibody detected the TMEM66 protein (arrow).



TMEM66 Antibody (N-term) (Cat. #AP10746a) flow cytometric analysis of 293 cells (right histogram) compared to a negative control cell (left histogram). FITC-conjugated goat-anti-rabbit secondary antibodies were used for the analysis.

TMEM66 Antibody (N-term) - Background

TMEM66 is a multi-pass membrane protein which belongs to the TMEM66 family. The exact function of TMEM66 remains unknown.

TMEM66 Antibody (N-term) - References

Rose, J. Phd, et al. Mol. Med. (2010) In press :
Zhang, Z., et al. Protein Sci. 13(10):2819-2824(2004)
Clark, H.F., et al. Genome Res. 13(10):2265-2270(2003)