

**TLL1 Antibody (C-term)**  
**Affinity Purified Rabbit Polyclonal Antibody (Pab)**  
**Catalog # AP10755b****Specification**

---

**TLL1 Antibody (C-term) - Product Information**

Application	WB, IHC-P,E
Primary Accession	<a href="#">O43897</a>
Other Accession	<a href="#">Q62381</a> , <a href="#">NP_036596.3</a>
Reactivity	Human
Predicted	Mouse
Host	Rabbit
Clonality	Polyclonal
Isotype	Rabbit IgG
Calculated MW	114709
Antigen Region	874-901

**TLL1 Antibody (C-term) - Additional Information****Gene ID** 7092**Other Names**

Tolloid-like protein 1, 3424-, TLL1, TLL

**Target/Specificity**

This TLL1 antibody is generated from rabbits immunized with a KLH conjugated synthetic peptide between 874-901 amino acids from the C-terminal region of human TLL1.

**Dilution**

WB~~1:1000

IHC-P~~1:50~100

E~~Use at an assay dependent concentration.

**Format**

Purified polyclonal antibody supplied in PBS with 0.09% (W/V) sodium azide. This antibody is purified through a protein A column, followed by peptide affinity purification.

**Storage**

Maintain refrigerated at 2-8°C for up to 2 weeks. For long term storage store at -20°C in small aliquots to prevent freeze-thaw cycles.

**Precautions**

TLL1 Antibody (C-term) is for research use only and not for use in diagnostic or therapeutic procedures.

**TLL1 Antibody (C-term) - Protein Information****Name** TLL1

## Synonyms TLL

**Function** Protease which processes procollagen C-propeptides, such as chordin, pro-biglycan and pro-lysyl oxidase. Required for the embryonic development. Predominant protease, which in the development, influences dorsal-ventral patterning and skeletogenesis.

## Cellular Location

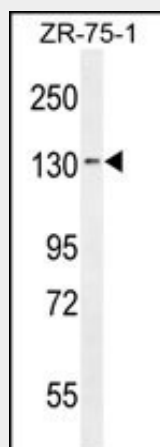
Secreted.

## TLL1 Antibody (C-term) - Protocols

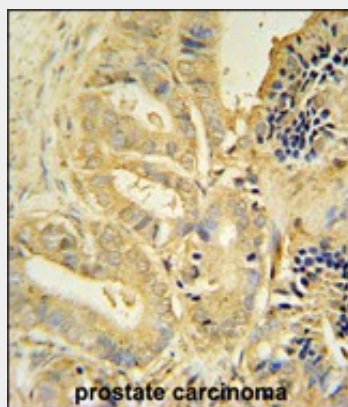
Provided below are standard protocols that you may find useful for product applications.

- [Western Blot](#)
- [Blocking Peptides](#)
- [Dot Blot](#)
- [Immunohistochemistry](#)
- [Immunofluorescence](#)
- [Immunoprecipitation](#)
- [Flow Cytometry](#)
- [Cell Culture](#)

## TLL1 Antibody (C-term) - Images



TLL1 Antibody (C-term) (Cat. #AP10755b) western blot analysis in ZR-75-1 cell line lysates (35ug/lane). This demonstrates the TLL1 antibody detected the TLL1 protein (arrow).



TLL1 antibody (C-term) (Cat. #AP10755b) immunohistochemistry analysis in formalin fixed and paraffin embedded human prostate carcinoma followed by peroxidase conjugation of the secondary antibody and DAB staining. This data demonstrates the use of the TLL1 antibody (C-term) for immunohistochemistry. Clinical relevance has not been evaluated.

#### **TLL1 Antibody (C-term) - Background**

This gene encodes an astacin-like zinc-dependent metalloprotease and is a subfamily member of the metzincin family. A similar protein in mice is required during heart development and specifically processes procollagen C-propeptides and chordin at similar cleavage sites.

#### **TLL1 Antibody (C-term) - References**

Rose, J.E., et al. Mol. Med. 16 (7-8), 247-253 (2010) :  
Berry, R., et al. FEBS Lett. 584(4):657-661(2010)  
Sabirzhanova, I.B., et al. Biochem. Biophys. Res. Commun. 389(2):338-342(2009)  
Stanczak, P., et al. Eur. J. Hum. Genet. 17(3):344-351(2009)  
Mac Sweeney, A., et al. J. Mol. Biol. 384(1):228-239(2008)