

**SPRR2A Antibody (C-term)**  
**Affinity Purified Rabbit Polyclonal Antibody (Pab)**  
**Catalog # AP10758b****Specification**

---

**SPRR2A Antibody (C-term) - Product Information**

Application	WB,E
Primary Accession	<a href="#">P35326</a>
Other Accession	<a href="#">NP_005979.1</a>
Reactivity	Human
Host	Rabbit
Clonality	Polyclonal
Isotype	Rabbit IgG
Antigen Region	48-72

**SPRR2A Antibody (C-term) - Additional Information****Gene ID** 6700**Other Names**

Small proline-rich protein 2A, SPR-2A, 2-1, SPRR2A

**Target/Specificity**

This SPRR2A antibody is generated from rabbits immunized with a KLH conjugated synthetic peptide between 48-72 amino acids from the C-terminal region of human SPRR2A.

**Dilution**

WB~~1:1000

**Format**

Purified polyclonal antibody supplied in PBS with 0.09% (W/V) sodium azide. This antibody is purified through a protein A column, followed by peptide affinity purification.

**Storage**

Maintain refrigerated at 2-8°C for up to 2 weeks. For long term storage store at -20°C in small aliquots to prevent freeze-thaw cycles.

**Precautions**

SPRR2A Antibody (C-term) is for research use only and not for use in diagnostic or therapeutic procedures.

**SPRR2A Antibody (C-term) - Protein Information****Name** SPRR2A {ECO:0000303|PubMed:34735226, ECO:0000312|HGNC:HGNC:11261}

**Function** Gut bactericidal protein that selectively kills Gram-positive bacteria by binding to negatively charged lipids on bacterial membranes, leading to bacterial membrane permeabilization and disruption (PubMed:[34735226](#)). Specifically binds lipids bearing negatively

charged headgroups, such as phosphatidic acid, phosphatidylserine (PS), cardiolipin (CL), and phosphatidylinositol phosphates, but not to zwitterionic or neutral lipids (PubMed:[34735226](#)). Induced by type-2 cytokines in response to helminth infection and is required to protect against helminth-induced bacterial invasion of intestinal tissue (By similarity). May also be involved in the development of the cornified envelope of squamous epithelia; however, additional evidences are required to confirm this result in vivo (PubMed:[8325635](#)).

#### Cellular Location

Secreted. Secreted, extracellular space. Cytoplasmic vesicle, secretory vesicle. Note=Present in intestinal secretory epithelial cells and is secreted into the intestinal lumen.

#### Tissue Location

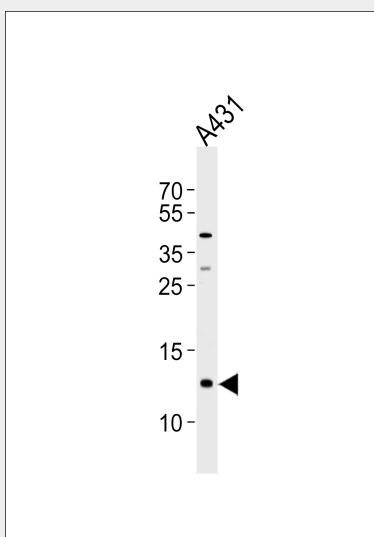
Expressed in intestine; selectively expressed in goblet cells.

### SPRR2A Antibody (C-term) - Protocols

Provided below are standard protocols that you may find useful for product applications.

- [Western Blot](#)
- [Blocking Peptides](#)
- [Dot Blot](#)
- [Immunohistochemistry](#)
- [Immunofluorescence](#)
- [Immunoprecipitation](#)
- [Flow Cytometry](#)
- [Cell Culture](#)

### SPRR2A Antibody (C-term) - Images



Western blot analysis of lysate from A431 cell line, using SPRR2A Antibody (C-term)(Cat. #AP10758b). AP10758b was diluted at 1:1000 at each lane. A goat anti-rabbit IgG H&L(HRP) at 1:5000 dilution was used as the secondary antibody. Lysate at 35ug per lane.

### SPRR2A Antibody (C-term) - Background

Cross-linked envelope protein of keratinocytes. It is a keratinocyte protein that first appears in the cell cytosol, but ultimately becomes cross-linked to membrane proteins by transglutaminase. All

that results in the formation of an insoluble envelope beneath the plasma membrane.

**SPRR2A Antibody (C-term) - References**

Kainu, K., et al. Exp. Dermatol. 18(2):109-115(2009)  
Demetris, A.J., et al. J. Hepatol. 48(2):276-288(2008)  
Tong, L., et al. Invest. Ophthalmol. Vis. Sci. 47(5):1938-1946(2006)  
Hong, S.H., et al. Mol. Cells 17(3):477-484(2004)  
Cabral, A., et al. J. Biol. Chem. 278(20):17792-17799(2003)