

**CK073 Antibody (N-term)**  
**Affinity Purified Rabbit Polyclonal Antibody (Pab)**  
**Catalog # AP10780a****Specification**

---

**CK073 Antibody (N-term) - Product Information**

Application	WB, IHC-P, FC,E
Primary Accession	<a href="#">Q53FT3</a>
Other Accession	<a href="#">NP_057485.2</a>
Reactivity	Human, Hamster
Host	Rabbit
Clonality	Polyclonal
Isotype	Rabbit IgG
Calculated MW	21628
Antigen Region	6-35

**CK073 Antibody (N-term) - Additional Information****Gene ID** 51501**Other Names**

Protein Hikeshi, C11orf73

**Target/Specificity**

This CK073 antibody is generated from rabbits immunized with a KLH conjugated synthetic peptide between 6-35 amino acids from the N-terminal region of human CK073.

**Dilution**

WB~~1:1000  
IHC-P~~1:50~100  
FC~~1:10~50

**Format**

Purified polyclonal antibody supplied in PBS with 0.09% (W/V) sodium azide. This antibody is purified through a protein A column, followed by peptide affinity purification.

**Storage**

Maintain refrigerated at 2-8°C for up to 2 weeks. For long term storage store at -20°C in small aliquots to prevent freeze-thaw cycles.

**Precautions**

CK073 Antibody (N-term) is for research use only and not for use in diagnostic or therapeutic procedures.

**CK073 Antibody (N-term) - Protein Information****Name** HIKESHI ([HGNC:26938](#))

**Synonyms** C11orf73

**Function** Acts as a specific nuclear import carrier for HSP70 proteins following heat-shock stress: acts by mediating the nucleoporin- dependent translocation of ATP-bound HSP70 proteins into the nucleus. HSP70 proteins import is required to protect cells from heat shock damages. Does not translocate ADP-bound HSP70 proteins into the nucleus.

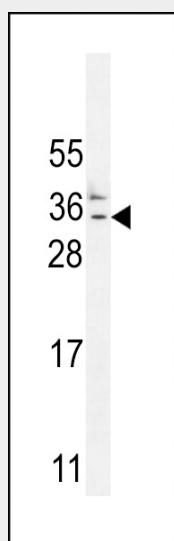
**Cellular Location**

Cytoplasm {ECO:0000250|UniProtKB:Q9DD02}. Cytoplasm, cytosol. Nucleus

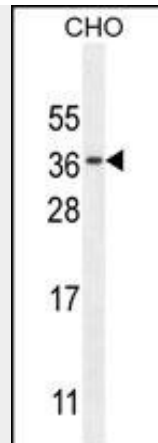
**CK073 Antibody (N-term) - Protocols**

Provided below are standard protocols that you may find useful for product applications.

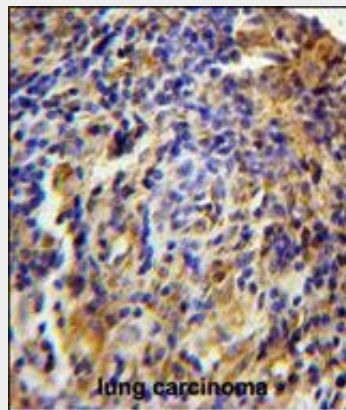
- [Western Blot](#)
- [Blocking Peptides](#)
- [Dot Blot](#)
- [Immunohistochemistry](#)
- [Immunofluorescence](#)
- [Immunoprecipitation](#)
- [Flow Cytometry](#)
- [Cell Culture](#)

**CK073 Antibody (N-term) - Images**

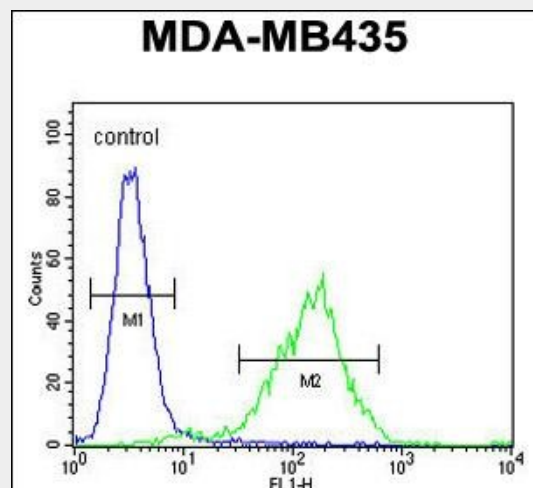
CK073 Antibody (N-term) (Cat. #AP10780a) western blot analysis in MDA-MB435 cell line lysates (35ug/lane). This demonstrates the CK073 antibody detected the CK073 protein (arrow).



CK073 Antibody (N-term) (Cat. #AP10780a) western blot analysis in CHO cell line lysates (35ug/lane). This demonstrates the CK073 antibody detected the CK073 protein (arrow).



CK073 Antibody (N-term) (Cat. #AP10780a) immunohistochemistry analysis in formalin fixed and paraffin embedded human lung carcinoma followed by peroxidase conjugation of the secondary antibody and DAB staining. This data demonstrates the use of the CK073 Antibody (N-term) for immunohistochemistry. Clinical relevance has not been evaluated.



CK073 Antibody (N-term) (Cat. #AP10780a) flow cytometric analysis of MDA-MB435 cells (right histogram) compared to a negative control cell (left histogram). FITC-conjugated goat-anti-rabbit secondary antibodies were used for the analysis.

#### CK073 Antibody (N-term) - Background

Required for organization and/or function of the secretory apparatus in Clara cells in lung (By similarity).

**CK073 Antibody (N-term) - References**

Need, A.C., et al. Hum. Mol. Genet. 18(23):4650-4661(2009)