

**CB086 Antibody (C-term)**  
**Affinity Purified Rabbit Polyclonal Antibody (Pab)**  
**Catalog # AP10783b****Specification**

---

**CB086 Antibody (C-term) - Product Information**

Application	WB, IHC-P,E
Primary Accession	<a href="#">O95876</a>
Other Accession	<a href="#">NP_056994.3</a>
Reactivity	Human
Host	Rabbit
Clonality	Polyclonal
Isotype	Rabbit IgG
Calculated MW	85084
Antigen Region	676-705

**CB086 Antibody (C-term) - Additional Information****Gene ID** 51057**Other Names**

WD repeat-containing and planar cell polarity effector protein fritz homolog, hFRTZ, Bardet-Biedl syndrome 15 protein, WD repeat-containing and planar cell polarity effector protein, WDPCP, BBS15, C2orf86, FRITZ

**Target/Specificity**

This CB086 antibody is generated from rabbits immunized with a KLH conjugated synthetic peptide between 676-705 amino acids from the C-terminal region of human CB086.

**Dilution**

WB~~1:1000  
IHC-P~~1:50~100

**Format**

Purified polyclonal antibody supplied in PBS with 0.09% (W/V) sodium azide. This antibody is purified through a protein A column, followed by peptide affinity purification.

**Storage**

Maintain refrigerated at 2-8°C for up to 2 weeks. For long term storage store at -20°C in small aliquots to prevent freeze-thaw cycles.

**Precautions**

CB086 Antibody (C-term) is for research use only and not for use in diagnostic or therapeutic procedures.

**CB086 Antibody (C-term) - Protein Information****Name** WDPCP

**Synonyms** BBS15, C2orf86, FRITZ

**Function** Probable effector of the planar cell polarity signaling pathway which regulates the septin cytoskeleton in both ciliogenesis and collective cell movements. Together with FUZ and WDPCP proposed to function as core component of the CPLANE (ciliogenesis and planar polarity effectors) complex involved in the recruitment of peripheral IFT-A proteins to basal bodies (By similarity).

**Cellular Location**

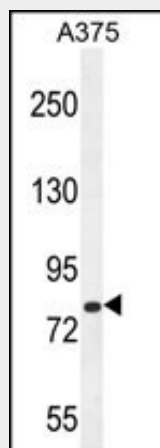
Cell membrane {ECO:0000250|UniProtKB:Q32NR9}. Cytoplasm, cytoskeleton, cilium axoneme {ECO:0000250|UniProtKB:Q32NR9} Cytoplasm, cytoskeleton, cilium basal body {ECO:0000250|UniProtKB:Q32NR9}

**CB086 Antibody (C-term) - Protocols**

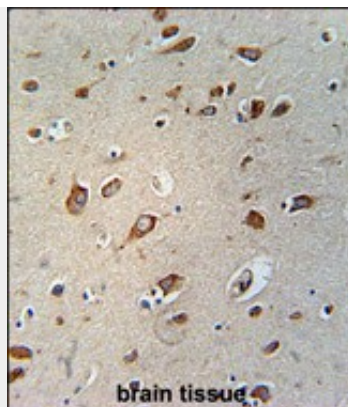
Provided below are standard protocols that you may find useful for product applications.

- [Western Blot](#)
- [Blocking Peptides](#)
- [Dot Blot](#)
- [Immunohistochemistry](#)
- [Immunofluorescence](#)
- [Immunoprecipitation](#)
- [Flow Cytometry](#)
- [Cell Culture](#)

**CB086 Antibody (C-term) - Images**



CB086 Antibody (C-term) (Cat. #AP10783b) western blot analysis in A375 cell line lysates (35ug/lane). This demonstrates the CB086 antibody detected the CB086 protein (arrow).



CB086 Antibody (C-term) (Cat. #AP10783b) immunohistochemistry analysis in formalin fixed and paraffin embedded human brain tissue followed by peroxidase conjugation of the secondary antibody and DAB staining. This data demonstrates the use of the CB086 Antibody (C-term) for immunohistochemistry. Clinical relevance has not been evaluated.

#### **CB086 Antibody (C-term) - Background**

The C2ORF86 gene encodes an ortholog of *Drosophila* 'fritz,' a cytoplasmic WD40 repeat protein that controls planar cell polarity (summarized by Kim et al., 2010 [PubMed 20671153]).

#### **CB086 Antibody (C-term) - References**

Bailey, S.D., et al. Diabetes Care 33(10):2250-2253(2010)  
Kim, S.K., et al. Science 329(5997):1337-1340(2010)  
Talmud, P.J., et al. Am. J. Hum. Genet. 85(5):628-642(2009)  
Eeles, R.A., et al. Nat. Genet. 41(10):1116-1121(2009)  
Melzer, D., et al. PLoS Genet. 4 (5), E1000072 (2008) :