

CR1L Antibody (C-term)
Affinity Purified Rabbit Polyclonal Antibody (Pab)
Catalog # AP10787b

Specification

CR1L Antibody (C-term) - Product Information

Application	WB, IHC-P,E
Primary Accession	Q2VPA4
Other Accession	NP_783641.1
Reactivity	Human
Host	Rabbit
Clonality	Polyclonal
Isotype	Rabbit IgG
Calculated MW	62714
Antigen Region	470-499

CR1L Antibody (C-term) - Additional Information

Gene ID 1379

Other Names

Complement component receptor 1-like protein, Complement C4b-binding protein CR-1-like protein, CR1L

Target/Specificity

This CR1L antibody is generated from rabbits immunized with a KLH conjugated synthetic peptide between 470-499 amino acids from the C-terminal region of human CR1L.

Dilution

WB~~1:1000
IHC-P~~1:50~100

Format

Purified polyclonal antibody supplied in PBS with 0.09% (W/V) sodium azide. This antibody is purified through a protein A column, followed by peptide affinity purification.

Storage

Maintain refrigerated at 2-8°C for up to 2 weeks. For long term storage store at -20°C in small aliquots to prevent freeze-thaw cycles.

Precautions

CR1L Antibody (C-term) is for research use only and not for use in diagnostic or therapeutic procedures.

CR1L Antibody (C-term) - Protein Information

Name CR1L

Cellular Location

Cytoplasm. Membrane. Secreted Note=Predominantly found in association with the membrane fraction, but also located in the cytoplasm and in the supernatant

Tissue Location

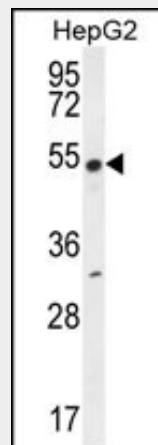
Expressed in fetal liver and to a lesser extent in fetal spleen and thymus. Expression appears to be limited to hematopoietic and fetal lymphoid tissue.

CR1L Antibody (C-term) - Protocols

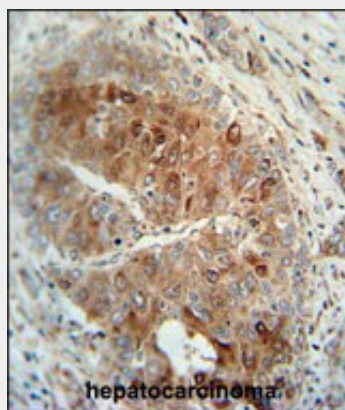
Provided below are standard protocols that you may find useful for product applications.

- [Western Blot](#)
- [Blocking Peptides](#)
- [Dot Blot](#)
- [Immunohistochemistry](#)
- [Immunofluorescence](#)
- [Immunoprecipitation](#)
- [Flow Cytometry](#)
- [Cell Culture](#)

CR1L Antibody (C-term) - Images



CR1L Antibody (C-term) (Cat. #AP10787b) western blot analysis in HepG2 cell line lysates (35ug/lane). This demonstrates the CR1L antibody detected the CR1L protein (arrow).



CR1L antibody (C-term) (Cat. #AP10787b) immunohistochemistry analysis in formalin fixed and

paraffin embedded human hepatocarcinoma followed by peroxidase conjugation of the secondary antibody and DAB staining. This data demonstrates the use of the CR1L antibody (C-term) for immunohistochemistry. Clinical relevance has not been evaluated.

CR1L Antibody (C-term) - References

- Sabatti, C., et al. Nat. Genet. 41(1):35-46(2009)
Logar, C.M., et al. Mol. Immunol. 40(11):831-840(2004)
Hourcade, D., et al. J. Biol. Chem. 265(2):974-980(1990)