

**DPEP3 Antibody (C-term)**  
**Affinity Purified Rabbit Polyclonal Antibody (Pab)**  
**Catalog # AP10789b**

**Specification**

---

**DPEP3 Antibody (C-term) - Product Information**

Application	WB,E
Primary Accession	<a href="#">O9H4B8</a>
Other Accession	<a href="#">NP_001123230.1</a>
Reactivity	Human
Host	Rabbit
Clonality	Polyclonal
Isotype	Rabbit IgG
Antigen Region	391-420

**DPEP3 Antibody (C-term) - Additional Information**

**Gene ID** 64180

**Other Names**

Dipeptidase 3, DPEP3

**Target/Specificity**

This DPEP3 antibody is generated from rabbits immunized with a KLH conjugated synthetic peptide between 391-420 amino acids from the C-terminal region of human DPEP3.

**Dilution**

WB~~1:1000

E~~Use at an assay dependent concentration.

**Format**

Purified polyclonal antibody supplied in PBS with 0.09% (W/V) sodium azide. This antibody is purified through a protein A column, followed by peptide affinity purification.

**Storage**

Maintain refrigerated at 2-8°C for up to 2 weeks. For long term storage store at -20°C in small aliquots to prevent freeze-thaw cycles.

**Precautions**

DPEP3 Antibody (C-term) is for research use only and not for use in diagnostic or therapeutic procedures.

**DPEP3 Antibody (C-term) - Protein Information**

**Name** DPEP3

**Function** Lacks dipeptidase activity and is unable to hydrolyze cystinyl-bis-glycine, leukotriene D4 and the beta-lactam antibiotic imipenem (PubMed:[32325220](#)). The absence of activity may be due

to the inability of asparagine (instead of aspartate found in DPEP1/2) at position 359 to function as the acid/base catalyst and activate the nucleophilic water/hydroxide (PubMed:[32325220](#)). A tyrosine (instead of histidine) at position 269 reduces affinity for the beta zinc and may cause substrate steric hindrance (PubMed:[32325220](#)).

#### Cellular Location

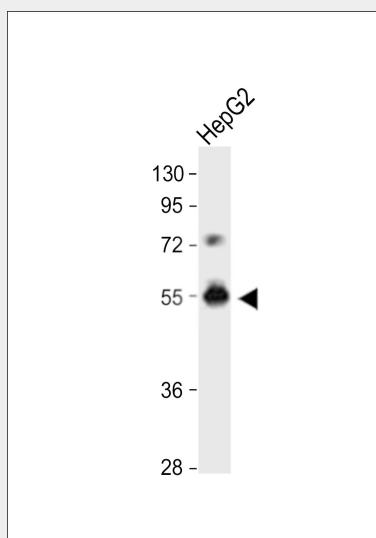
Membrane {ECO:0000250|UniProtKB:Q9DA79}; Lipid- anchor, GPI-anchor  
{ECO:0000250|UniProtKB:Q9DA79}

#### DPEP3 Antibody (C-term) - Protocols

Provided below are standard protocols that you may find useful for product applications.

- [Western Blot](#)
- [Blocking Peptides](#)
- [Dot Blot](#)
- [Immunohistochemistry](#)
- [Immunofluorescence](#)
- [Immunoprecipitation](#)
- [Flow Cytometry](#)
- [Cell Culture](#)

#### DPEP3 Antibody (C-term) - Images



DPEP3 Antibody (C-term) (Cat. #AP10789b) western blot analysis in HepG2 cell line lysates (35ug/lane). This demonstrates the DPEP3 antibody detected the DPEP3 protein (arrow).

#### DPEP3 Antibody (C-term) - Background

This gene encodes a membrane-bound glycoprotein from the family of dipeptidases involved in hydrolytic metabolism of various dipeptides, including penem and carbapenem beta-lactam antibiotics. This gene is located on chromosome 16 in a cluster with another member of this family. Alternatively spliced transcript variants that encode different isoforms have been found for this gene.

#### DPEP3 Antibody (C-term) - References

Sabatti, C., et al. Nat. Genet. 41(1):35-46(2009)  
Clark, H.F., et al. Genome Res. 13(10):2265-2270(2003)  
Habib, G.M., et al. FASEB J. 17(10):1313-1315(2003)