

**ACD10 Antibody (Center)**  
**Affinity Purified Rabbit Polyclonal Antibody (Pab)**  
**Catalog # AP10806c****Specification**

---

**ACD10 Antibody (Center) - Product Information**

Application	FC, IHC-P, WB,E
Primary Accession	<a href="#">O6JON1</a>
Other Accession	<a href="#">NP_079523.3</a>
Reactivity	Human
Host	Rabbit
Clonality	Polyclonal
Isotype	Rabbit IgG
Calculated MW	118834
Antigen Region	393-421

**ACD10 Antibody (Center) - Additional Information****Gene ID** 80724**Other Names**

Acyl-CoA dehydrogenase family member 10, ACAD-10, 1399-, ACAD10

**Target/Specificity**

This ACD10 antibody is generated from rabbits immunized with a KLH conjugated synthetic peptide between 393-421 amino acids from the Central region of human ACD10.

**Dilution**

FC~~1:10~50

IHC-P~~1:50~100

WB~~1:1000

E~~Use at an assay dependent concentration.

**Format**

Purified polyclonal antibody supplied in PBS with 0.09% (W/V) sodium azide. This antibody is purified through a protein A column, followed by peptide affinity purification.

**Storage**

Maintain refrigerated at 2-8°C for up to 2 weeks. For long term storage store at -20°C in small aliquots to prevent freeze-thaw cycles.

**Precautions**

ACD10 Antibody (Center) is for research use only and not for use in diagnostic or therapeutic procedures.

**ACD10 Antibody (Center) - Protein Information****Name** ACAD10

**Function** Acyl-CoA dehydrogenase only active with R- and S-2-methyl- C15-CoA.

**Tissue Location**

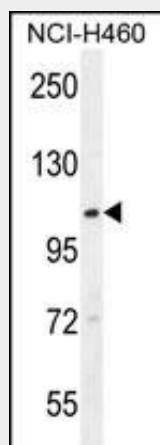
Widely expressed with highest expression in fetal brain, followed by heart, muscle, kidney and adult brain. Expression levels varying from isoform to isoform.

**ACD10 Antibody (Center) - Protocols**

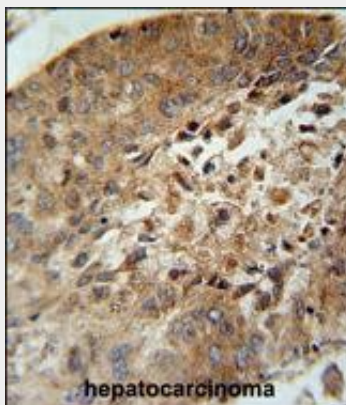
Provided below are standard protocols that you may find useful for product applications.

- [Western Blot](#)
- [Blocking Peptides](#)
- [Dot Blot](#)
- [Immunohistochemistry](#)
- [Immunofluorescence](#)
- [Immunoprecipitation](#)
- [Flow Cytometry](#)
- [Cell Culture](#)

**ACD10 Antibody (Center) - Images**

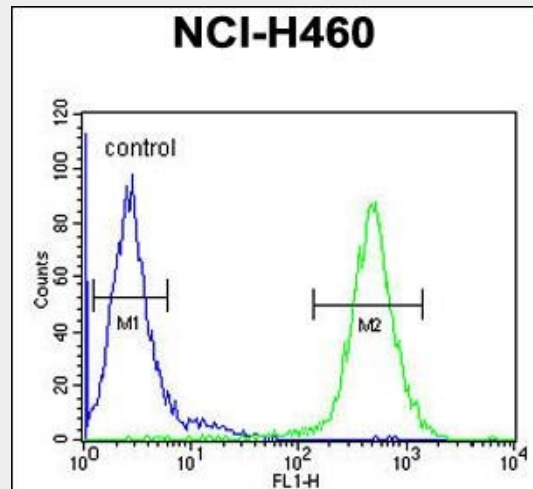


ACD10 Antibody (Center) (Cat. #AP10806c) western blot analysis in NCI-H460 cell line lysates (35ug/lane). This demonstrates the ACD10 antibody detected the ACD10 protein (arrow).



ACD10 Antibody (Center) (Cat. #AP10806c) immunohistochemistry analysis in formalin fixed and paraffin embedded human hepatocarcinoma followed by peroxidase conjugation of the secondary

antibody and DAB staining. This data demonstrates the use of the ACD10 Antibody (Center) for immunohistochemistry. Clinical relevance has not been evaluated.



ACD10 Antibody (Center) (Cat. #AP10806c) flow cytometric analysis of NCI-H460 cells (right histogram) compared to a negative control cell (left histogram). FITC-conjugated goat-anti-rabbit secondary antibodies were used for the analysis.

#### **ACD10 Antibody (Center) - Background**

This gene encodes a member of the acyl-CoA dehydrogenase family of enzymes (ACADs), which participate in the beta-oxidation of fatty acids in mitochondria. The encoded enzyme contains a hydrolase domain at the N-terminal portion, a serine/threonine protein kinase catalytic domain in the central region, and a conserved ACAD domain at the C-terminus. Several alternatively spliced transcript variants of this gene have been described, but the full-length nature of some of these variants has not been determined.

#### **ACD10 Antibody (Center) - References**

Bian, L., et al. *Diabetologia* 53(7):1349-1353(2010)  
Rose, J.E., et al. *Mol. Med.* 16 (7-8), 247-253 (2010) :  
Vega, A., et al. *Gynecol. Oncol.* 112(1):210-214(2009)  
Ye, X., et al. *Mol. Biol. Rep.* 31(3):191-195(2004)  
Sogayar, M.C., et al. *Genome Res.* 14(7):1413-1423(2004)