

**M4A4A Antibody (N-term)**  
**Affinity Purified Rabbit Polyclonal Antibody (Pab)**  
**Catalog # AP10816a****Specification**

---

**M4A4A Antibody (N-term) - Product Information**

Application	WB, FC,E
Primary Accession	<a href="#">O96JQ5</a>
Other Accession	<a href="#">NP_076926.2</a>
Reactivity	Human
Host	Rabbit
Clonality	Polyclonal
Isotype	Rabbit IgG
Antigen Region	37-64

**M4A4A Antibody (N-term) - Additional Information****Gene ID** 51338**Other Names**

Membrane-spanning 4-domains subfamily A member 4A, CD20 antigen-like 1, Four-span transmembrane protein 1, MS4A4A, 4SPAN1, CD20L1, MS4A4

**Target/Specificity**

This M4A4A antibody is generated from rabbits immunized with a KLH conjugated synthetic peptide between 37-64 amino acids from the N-terminal region of human M4A4A.

**Dilution**

WB~~1:1000

FC~~1:10~50

**Format**

Purified polyclonal antibody supplied in PBS with 0.09% (W/V) sodium azide. This antibody is purified through a protein A column, followed by peptide affinity purification.

**Storage**

Maintain refrigerated at 2-8°C for up to 2 weeks. For long term storage store at -20°C in small aliquots to prevent freeze-thaw cycles.

**Precautions**

M4A4A Antibody (N-term) is for research use only and not for use in diagnostic or therapeutic procedures.

**M4A4A Antibody (N-term) - Protein Information****Name** MS4A4A**Synonyms** 4SPAN1, CD20L1, MS4A4

**Function** May be involved in signal transduction as a component of a multimeric receptor complex.

**Cellular Location**

Membrane; Multi-pass membrane protein.

**Tissue Location**

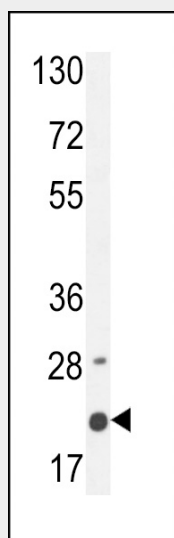
Variable expression in multiple hemopoietic cell lines

**M4A4A Antibody (N-term) - Protocols**

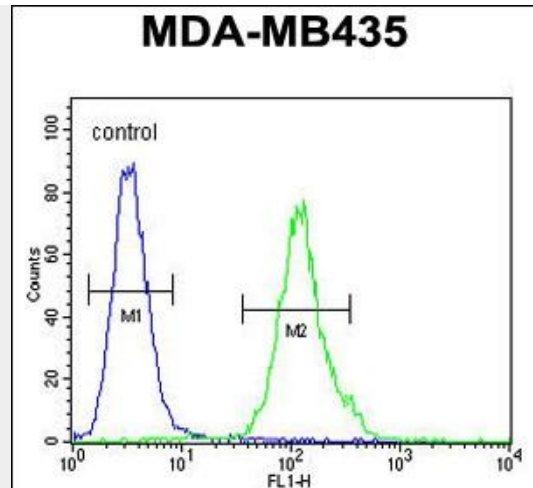
Provided below are standard protocols that you may find useful for product applications.

- [Western Blot](#)
- [Blocking Peptides](#)
- [Dot Blot](#)
- [Immunohistochemistry](#)
- [Immunofluorescence](#)
- [Immunoprecipitation](#)
- [Flow Cytometry](#)
- [Cell Culture](#)

**M4A4A Antibody (N-term) - Images**



M4A4A Antibody (N-term) (Cat. #AP10816a) western blot analysis in MDA-MB435 cell line lysates (35ug/lane). This demonstrates the M4A4A antibody detected the M4A4A protein (arrow).



M4A4A Antibody (N-term) (Cat. #AP10816a) flow cytometric analysis of MDA-MB435 cells (right histogram) compared to a negative control cell (left histogram). FITC-conjugated goat-anti-rabbit secondary antibodies were used for the analysis.

#### **M4A4A Antibody (N-term) - Background**

This gene encodes a member of the membrane-spanning 4A gene family. Members of this nascent protein family are characterized by common structural features and similar intron/exon splice boundaries and display unique expression patterns among hematopoietic cells and nonlymphoid tissues. Alternative splicing of this gene results in several transcript variants; however, not all transcripts have been fully described.

#### **M4A4A Antibody (N-term) - References**

Liang, Y., et al. Immunogenetics 53(5):357-368(2001)  
Liang, Y., et al. Genomics 72(2):119-127(2001)  
Ishibashi, K., et al. Gene 264(1):87-93(2001)