

SYNE3 Antibody (C-term)
Affinity Purified Rabbit Polyclonal Antibody (Pab)
Catalog # AP10823b**Specification**

SYNE3 Antibody (C-term) - Product Information

Application	WB, IHC-P,E
Primary Accession	Q6ZMZ3
Other Accession	NP_689805.3
Reactivity	Human, Mouse
Host	Rabbit
Clonality	Polyclonal
Isotype	Rabbit IgG
Calculated MW	112216
Antigen Region	852-880

SYNE3 Antibody (C-term) - Additional Information**Gene ID** 161176**Other Names**

Nesprin-3, Nuclear envelope spectrin repeat protein 3, SYNE3, C14orf49

Target/Specificity

This SYNE3 antibody is generated from rabbits immunized with a KLH conjugated synthetic peptide between 852-880 amino acids from the C-terminal region of human SYNE3.

Dilution

WB~~1:1000

IHC-P~~1:50~100

E~~Use at an assay dependent concentration.

Format

Purified polyclonal antibody supplied in PBS with 0.09% (W/V) sodium azide. This antibody is purified through a protein A column, followed by peptide affinity purification.

Storage

Maintain refrigerated at 2-8°C for up to 2 weeks. For long term storage store at -20°C in small aliquots to prevent freeze-thaw cycles.

Precautions

SYNE3 Antibody (C-term) is for research use only and not for use in diagnostic or therapeutic procedures.

SYNE3 Antibody (C-term) - Protein Information**Name** SYNE3 ([HGNC:19861](#))

Function As a component of the LINC (Linker of Nucleoskeleton and Cytoskeleton) complex involved in the connection between the nuclear lamina and the cytoskeleton. The nucleocytoplasmic interactions established by the LINC complex play an important role in the transmission of mechanical forces across the nuclear envelope and in nuclear movement and positioning. Probable anchoring protein which tethers the nucleus to the cytoskeleton by binding PLEC which can associate with the intermediate filament system. Plays a role in the regulation of aortic epithelial cell morphology, and is required for flow-induced centrosome polarization and directional migration in aortic endothelial cells.

Cellular Location

Nucleus outer membrane; Single-pass type IV membrane protein. Nucleus envelope. Rough endoplasmic reticulum

Tissue Location

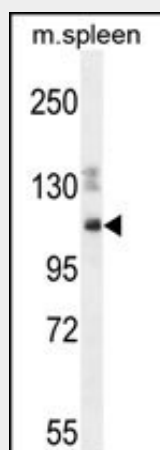
Expressed in aortic endothelial cells (at protein level).

SYNE3 Antibody (C-term) - Protocols

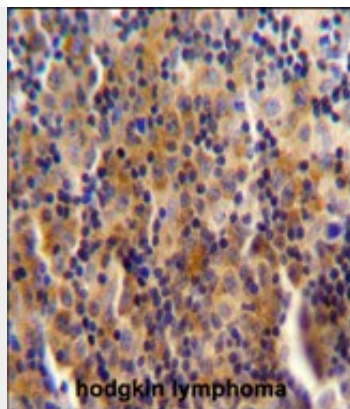
Provided below are standard protocols that you may find useful for product applications.

- [Western Blot](#)
- [Blocking Peptides](#)
- [Dot Blot](#)
- [Immunohistochemistry](#)
- [Immunofluorescence](#)
- [Immunoprecipitation](#)
- [Flow Cytometry](#)
- [Cell Culture](#)

SYNE3 Antibody (C-term) - Images



SYNE3 Antibody (C-term) (Cat. #AP10823b) western blot analysis in mouse spleen cell line lysates (35ug/lane). This demonstrates the SYNE3 antibody detected the SYNE3 protein (arrow).



SYNE3 antibody (C-term) (Cat. #AP10823b) immunohistochemistry analysis in formalin fixed and paraffin embedded human hodgkin lymphoma followed by peroxidase conjugation of the secondary antibody and DAB staining. This data demonstrates the use of SYNE3 antibody (C-term) for immunohistochemistry. Clinical relevance has not been evaluated.

SYNE3 Antibody (C-term) - Background

Component of SUN-protein-containing multivariate complexes also called LINC complexes which link the nucleoskeleton and cytoskeleton by providing versatile outer nuclear membrane attachment sites for cytoskeletal filaments. Involved in the maintenance of nuclear organization and structural integrity. Probable anchoring protein which tethers the nucleus to the cytoskeleton by binding PLEC which can associate with the intermediate filament system.

SYNE3 Antibody (C-term) - References

Nery, F.C., et al. J. Cell. Sci. 121 (PT 20), 3476-3486 (2008) :
Stewart-Hutchinson, P.J., et al. Exp. Cell Res. 314(8):1892-1905(2008)
Wilhelmsen, K., et al. J. Cell Biol. 171(5):799-810(2005)
Heilig, R., et al. Nature 421(6923):601-607(2003)