

**LARP6 Antibody (N-term)**  
**Affinity Purified Rabbit Polyclonal Antibody (Pab)**  
**Catalog # AP10830A****Specification**

---

**LARP6 Antibody (N-term) - Product Information**

Application	WB, IHC-P, FC,E
Primary Accession	<a href="#">O9BRS8</a>
Other Accession	<a href="#">NP_060827.2</a>
Reactivity	Human
Host	Rabbit
Clonality	Polyclonal
Isotype	Rabbit IgG
Calculated MW	54737
Antigen Region	7-35

**LARP6 Antibody (N-term) - Additional Information****Gene ID** 55323**Other Names**

La-related protein 6, Acheron, Achn, La ribonucleoprotein domain family member 6, LARP6

**Target/Specificity**

This LARP6 antibody is generated from rabbits immunized with a KLH conjugated synthetic peptide between 7-35 amino acids from the N-terminal region of human LARP6.

**Dilution**

WB~~1:1000  
IHC-P~~1:50~100  
FC~~1:10~50

**Format**

Purified polyclonal antibody supplied in PBS with 0.09% (W/V) sodium azide. This antibody is purified through a protein A column, followed by peptide affinity purification.

**Storage**

Maintain refrigerated at 2-8°C for up to 2 weeks. For long term storage store at -20°C in small aliquots to prevent freeze-thaw cycles.

**Precautions**

LARP6 Antibody (N-term) is for research use only and not for use in diagnostic or therapeutic procedures.

**LARP6 Antibody (N-term) - Protein Information****Name** LARP6

**Function** Regulates the coordinated translation of type I collagen alpha-1 and alpha-2 mRNAs, CO1A1 and CO1A2. Stabilizes mRNAs through high-affinity binding of a stem-loop structure in their 5' UTR. This regulation requires VIM and MYH10 filaments, and the helicase DHX9.

**Cellular Location**

Cytoplasm. Nucleus. Note=Shuttles between the nucleus and the cytoplasm

**Tissue Location**

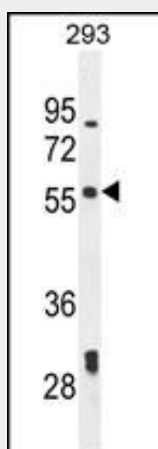
Expressed in numerous tissues.

**LARP6 Antibody (N-term) - Protocols**

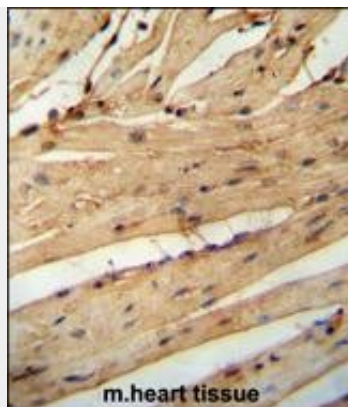
Provided below are standard protocols that you may find useful for product applications.

- [Western Blot](#)
- [Blocking Peptides](#)
- [Dot Blot](#)
- [Immunohistochemistry](#)
- [Immunofluorescence](#)
- [Immunoprecipitation](#)
- [Flow Cytometry](#)
- [Cell Culture](#)

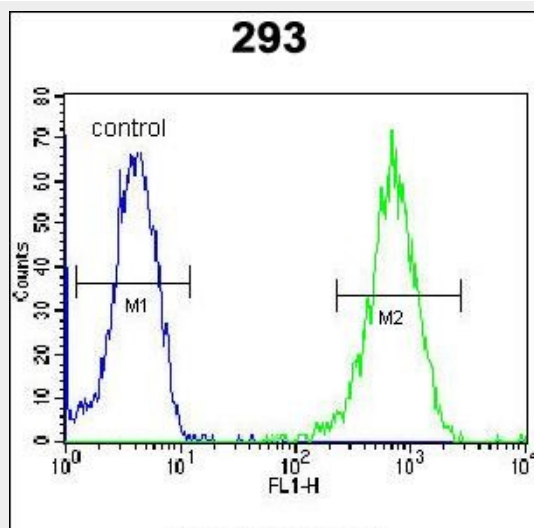
**LARP6 Antibody (N-term) - Images**



LARP6 Antibody (N-term) (Cat. #AP10830a) western blot analysis in 293 cell line lysates (35ug/lane). This demonstrates the LARP6 antibody detected the LARP6 protein (arrow).



LARP6 antibody (N-term) (Cat. #AP10830a) immunohistochemistry analysis in formalin fixed and paraffin embedded mouse heart tissue followed by peroxidase conjugation of the secondary antibody and DAB staining. This data demonstrates the use of the LARP6 antibody (N-term) for immunohistochemistry. Clinical relevance has not been evaluated.



LARP6 Antibody (N-term) (Cat. #AP10830a) flow cytometric analysis of 293 cells (right histogram) compared to a negative control cell (left histogram). FITC-conjugated goat-anti-rabbit secondary antibodies were used for the analysis.

### **LARP6 Antibody (N-term) - Background**

LARP6 is a member of the La ribonucleoprotein domain family, which all contain one characteristic La motif. LARP6 shuttles between the cytoplasm and nucleus. It is proposed that members of this family play a role in translation and mRNA stability.

### **LARP6 Antibody (N-term) - References**

Cai, L., et al. J. Mol. Biol. 395(2):309-326(2010)  
Glenn, H.L., et al. Am. J. Physiol., Cell Physiol. 298 (1), C46-C55 (2010) :  
Valavanis, C., et al. Gene 393 (1-2), 101-109 (2007) :  
Olsen, J.V., et al. Cell 127(3):635-648(2006)  
Olsen, J.V., et al. Cell 127(3):635-648(2006)