

**IMMP1L Antibody (C-term)**  
**Affinity Purified Rabbit Polyclonal Antibody (Pab)**  
**Catalog # AP10836B**

**Specification**

---

**IMMP1L Antibody (C-term) - Product Information**

Application	WB,E
Primary Accession	<a href="#">O96LU5</a>
Other Accession	<a href="#">O9CQU8</a> , <a href="#">NP_659418.1</a>
Reactivity	Human, Mouse
Host	Rabbit
Clonality	Polyclonal
Isotype	Rabbit IgG
Calculated MW	18504
Antigen Region	100-127

**IMMP1L Antibody (C-term) - Additional Information**

**Gene ID** 196294

**Other Names**

Mitochondrial inner membrane protease subunit 1, 3421-, IMP1-like protein, IMMP1L

**Target/Specificity**

This IMMP1L antibody is generated from rabbits immunized with a KLH conjugated synthetic peptide between 100-127 amino acids from the C-terminal region of human IMMP1L.

**Dilution**

WB~~1:1000

E~~Use at an assay dependent concentration.

**Format**

Purified polyclonal antibody supplied in PBS with 0.09% (W/V) sodium azide. This antibody is purified through a protein A column, followed by peptide affinity purification.

**Storage**

Maintain refrigerated at 2-8°C for up to 2 weeks. For long term storage store at -20°C in small aliquots to prevent freeze-thaw cycles.

**Precautions**

IMMP1L Antibody (C-term) is for research use only and not for use in diagnostic or therapeutic procedures.

**IMMP1L Antibody (C-term) - Protein Information**

**Name** IMMP1L

**Function** Catalyzes the removal of transit peptides required for the targeting of proteins from the

mitochondrial matrix, across the inner membrane, into the inter-membrane space. Known to process the nuclear encoded protein DIABLO.

#### Cellular Location

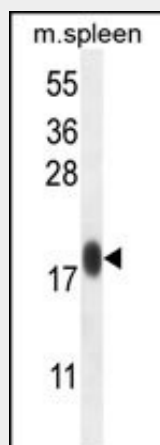
Mitochondrion inner membrane

#### IMMP1L Antibody (C-term) - Protocols

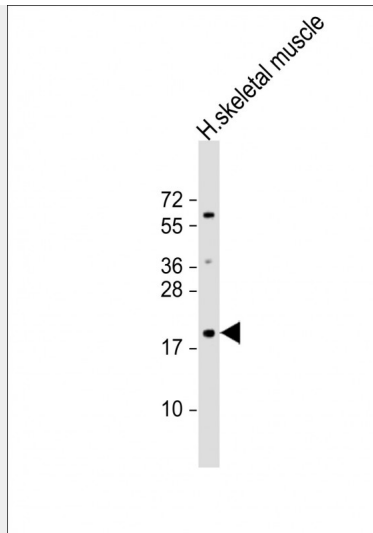
Provided below are standard protocols that you may find useful for product applications.

- [Western Blot](#)
- [Blocking Peptides](#)
- [Dot Blot](#)
- [Immunohistochemistry](#)
- [Immunofluorescence](#)
- [Immunoprecipitation](#)
- [Flow Cytometry](#)
- [Cell Culture](#)

#### IMMP1L Antibody (C-term) - Images



IMMP1L Antibody (C-term) (Cat. #AP10836b) western blot analysis in mouse spleen tissue lysates (35ug/lane). This demonstrates the IMMP1L antibody detected the IMMP1L protein (arrow).



Anti-IMMP1L Antibody (C-term) at 1:1000 dilution + human skeletal muscle lysate  
Lysates/proteins at 20 µg per lane. Secondary Goat Anti-Rabbit IgG, (H+L), Peroxidase conjugated  
at 1/10000 dilution. Predicted band size : 19 kDa Blocking/Dilution buffer: 5% NFDM/TBST.

#### **IMMP1L Antibody (C-term) - Background**

The mitochondrial inner membrane peptidase (IMP) complex generates mature, active proteins in the mitochondrial intermembrane space by proteolytically removing the mitochondrial targeting presequence of nuclear-encoded proteins. IMP1 and IMP2 (IMMP2L; MIM 605977) are the catalytic subunits of the IMP complex (Burri et al., 2005 [PubMed 15814844]).

#### **IMMP1L Antibody (C-term) - References**

Bailey, S.D., et al. Diabetes Care (2010) In press :  
Talmud, P.J., et al. Am. J. Hum. Genet. 85(5):628-642(2009)  
Taylor, T.D., et al. Nature 440(7083):497-500(2006)  
Burri, L., et al. Mol. Biol. Cell 16(6):2926-2933(2005)