

BCORL1 Antibody (N-term)
Affinity Purified Rabbit Polyclonal Antibody (Pab)
Catalog # AP10847a**Specification**

BCORL1 Antibody (N-term) - Product Information

Application	WB, IHC-P, FC,E
Primary Accession	Q5H9F3
Other Accession	NP_068765.2
Reactivity	Human
Host	Rabbit
Clonality	Polyclonal
Isotype	Rabbit IgG
Antigen Region	69-98

BCORL1 Antibody (N-term) - Additional Information**Gene ID** 63035**Other Names**

BCL-6 corepressor-like protein 1, BCoR-L1, BCoR-like protein 1, BCORL1

Target/Specificity

This BCORL1 antibody is generated from rabbits immunized with a KLH conjugated synthetic peptide between 69-98 amino acids from the N-terminal region of human BCORL1.

Dilution

WB~~1:1000
IHC-P~~1:50~100
FC~~1:10~50

Format

Purified polyclonal antibody supplied in PBS with 0.09% (W/V) sodium azide. This antibody is purified through a protein A column, followed by peptide affinity purification.

Storage

Maintain refrigerated at 2-8°C for up to 2 weeks. For long term storage store at -20°C in small aliquots to prevent freeze-thaw cycles.

Precautions

BCORL1 Antibody (N-term) is for research use only and not for use in diagnostic or therapeutic procedures.

BCORL1 Antibody (N-term) - Protein Information**Name** BCORL1 ([HGNC:25657](#))**Function** Transcriptional corepressor. May specifically inhibit gene expression when recruited to

promoter regions by sequence-specific DNA-binding proteins such as BCL6. This repression may be mediated at least in part by histone deacetylase activities which can associate with this corepressor.

Cellular Location

Nucleus.

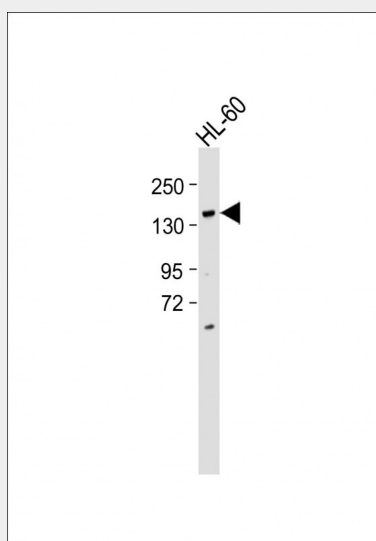
Tissue Location

Detected in testis and prostate. Detected at lower levels in peripheral blood leukocytes and spleen

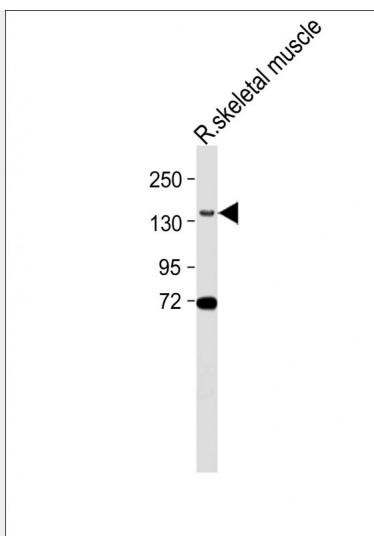
BCORL1 Antibody (N-term) - Protocols

Provided below are standard protocols that you may find useful for product applications.

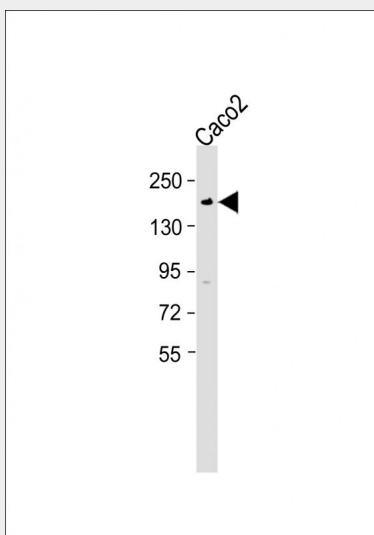
- [Western Blot](#)
- [Blocking Peptides](#)
- [Dot Blot](#)
- [Immunohistochemistry](#)
- [Immunofluorescence](#)
- [Immunoprecipitation](#)
- [Flow Cytometry](#)
- [Cell Culture](#)

BCORL1 Antibody (N-term) - Images

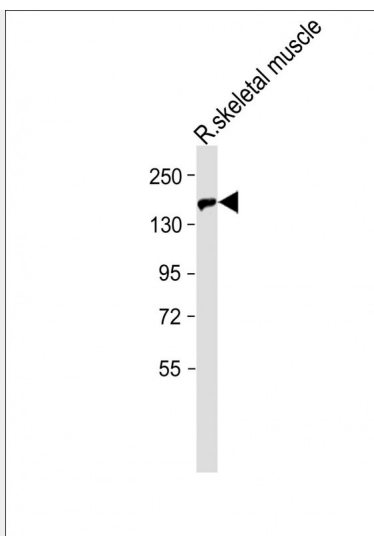
Anti-BCORL1 Antibody (N-term) at 1:500 dilution + HL-60 whole cell lysate Lysates/proteins at 20 μ g per lane. Secondary Goat Anti-Rabbit IgG, (H+L), Peroxidase conjugated at 1/10000 dilution. Predicted band size : 183 kDa Blocking/Dilution buffer: 5% NFDM/TBST.



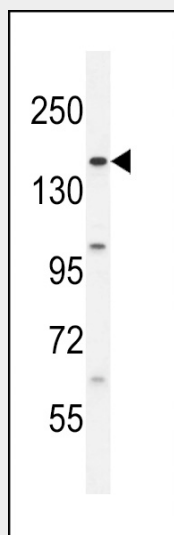
Anti-BCORL1 Antibody (N-term) at 1:500 dilution + Rat skeletal muscle lysate Lysates/proteins at 20 µg per lane. Secondary Goat Anti-Rabbit IgG, (H+L), Peroxidase conjugated at 1/10000 dilution. Predicted band size : 183 kDa Blocking/Dilution buffer: 5% NFDM/TBST.



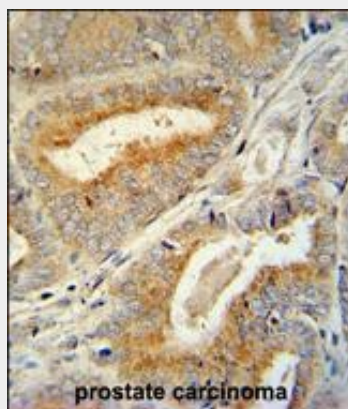
Anti-BCORL1 Antibody (N-term) at 1:1000 dilution + Caco2 whole cell lysate Lysates/proteins at 20 µg per lane. Secondary Goat Anti-Rabbit IgG, (H+L), Peroxidase conjugated at 1/10000 dilution. Predicted band size : 183 kDa Blocking/Dilution buffer: 5% NFDM/TBST.



Anti-BCORL1 Antibody (N-term) at 1:500 dilution + Rat skeletal muscle lysate Lysates/proteins at 20 µg per lane. Secondary Goat Anti-Rabbit IgG, (H+L), Peroxidase conjugated at 1/10000 dilution. Predicted band size : 183 kDa Blocking/Dilution buffer: 5% NFDM/TBST.

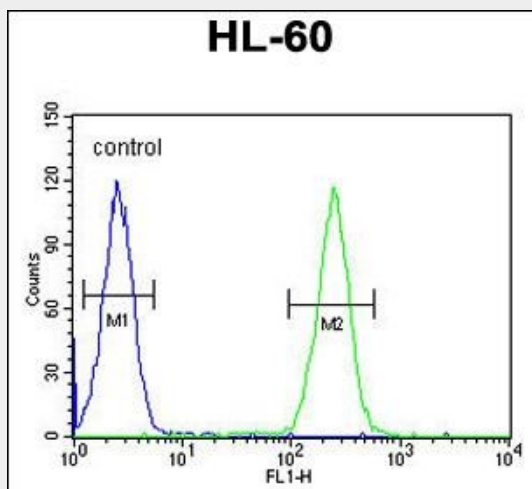


BCORL1 Antibody (N-term) (Cat. #AP10847a) western blot analysis in HL-60 cell line lysates (35ug/lane). This demonstrates the BCORL1 antibody detected the BCORL1 protein (arrow).



BCORL1 antibody (N-term) (Cat. #AP10847a) immunohistochemistry analysis in formalin fixed and paraffin embedded human prostate carcinoma followed by peroxidase conjugation of the

secondary antibody and DAB staining. This data demonstrates the use of the BCORL1 antibody (N-term) for immunohistochemistry. Clinical relevance has not been evaluated.



BCORL1 Antibody (N-term) (Cat. #AP10847a) flow cytometric analysis of HL-60 cells (right histogram) compared to a negative control cell (left histogram). FITC-conjugated goat-anti-rabbit secondary antibodies were used for the analysis.

BCORL1 Antibody (N-term) - Background

The protein encoded by this gene is a transcriptional corepressor that is found tethered to promoter regions by DNA-binding proteins. The encoded protein can interact with several different class II histone deacetylases to repress transcription. Two transcript variants encoding different isoforms have been found for this gene.

BCORL1 Antibody (N-term) - References

Pagan, J.K., et al. J. Biol. Chem. 282(20):15248-15257(2007)
Lose, F., et al. Breast Cancer Res. 9 (4), R54 (2007) :