

CCDC122 Antibody (C-term)
Affinity Purified Rabbit Polyclonal Antibody (Pab)
Catalog # AP10856B**Specification**

CCDC122 Antibody (C-term) - Product Information

Application	FC, IHC-P, WB,E
Primary Accession	Q5T0U0
Other Accession	Q8BVN0 , NP_659411.2
Reactivity	Human
Predicted	Mouse
Host	Rabbit
Clonality	Polyclonal
Isotype	Rabbit IgG
Calculated MW	32206
Antigen Region	203-231

CCDC122 Antibody (C-term) - Additional Information**Gene ID** 160857**Other Names**

Coiled-coil domain-containing protein 122, CCDC122

Target/Specificity

This CCDC122 antibody is generated from rabbits immunized with a KLH conjugated synthetic peptide between 203-231 amino acids from the C-terminal region of human CCDC122.

Dilution

FC~~1:10~50

IHC-P~~1:50~100

WB~~1:1000

E~~Use at an assay dependent concentration.

Format

Purified polyclonal antibody supplied in PBS with 0.09% (W/V) sodium azide. This antibody is purified through a protein A column, followed by peptide affinity purification.

Storage

Maintain refrigerated at 2-8°C for up to 2 weeks. For long term storage store at -20°C in small aliquots to prevent freeze-thaw cycles.

Precautions

CCDC122 Antibody (C-term) is for research use only and not for use in diagnostic or therapeutic procedures.

CCDC122 Antibody (C-term) - Protein Information

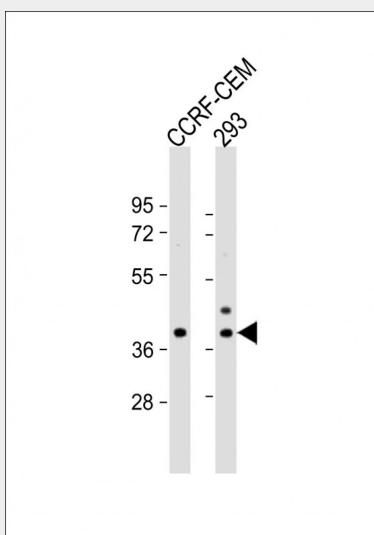
Name CCDC122

CCDC122 Antibody (C-term) - Protocols

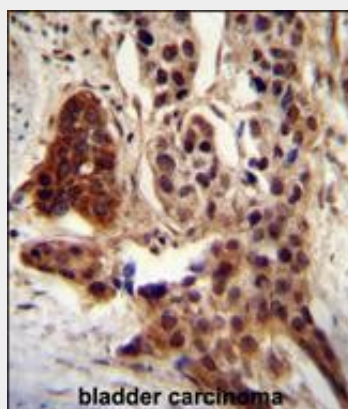
Provided below are standard protocols that you may find useful for product applications.

- [Western Blot](#)
- [Blocking Peptides](#)
- [Dot Blot](#)
- [Immunohistochemistry](#)
- [Immunofluorescence](#)
- [Immunoprecipitation](#)
- [Flow Cytometry](#)
- [Cell Culture](#)

CCDC122 Antibody (C-term) - Images

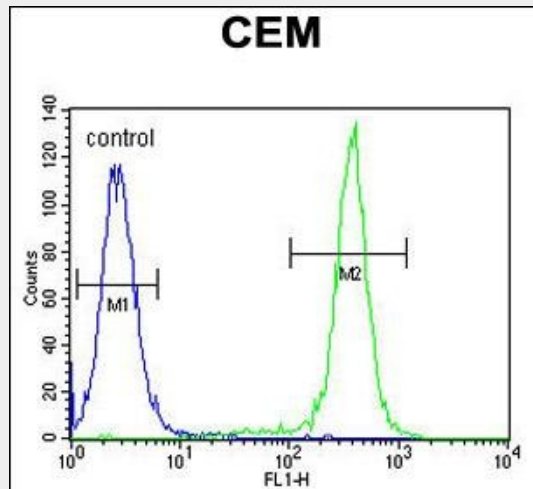


All lanes : Anti-CCDC122 Antibody (C-term) at 1:1000 dilution Lane 1: CCRF-CEM whole cell lysate Lane 2: 293 whole cell lysate Lysates/proteins at 20 µg per lane. Secondary Goat Anti-Rabbit IgG, (H+L), Peroxidase conjugated at 1/10000 dilution. Predicted band size : 32 kDa Blocking/Dilution buffer: 5% NFDM/TBST.



CCDC122 antibody (C-term) (Cat. #AP10856b) immunohistochemistry analysis in formalin fixed and paraffin embedded human bladder carcinoma followed by peroxidase conjugation of the

secondary antibody and DAB staining. This data demonstrates the use of CCDC122 antibody (C-term) for immunohistochemistry. Clinical relevance has not been evaluated.



CCDC122 Antibody (C-term) (Cat. #AP10856b) flow cytometric analysis of CEM cells (right histogram) compared to a negative control cell (left histogram). FITC-conjugated goat-anti-rabbit secondary antibodies were used for the analysis.

CCDC122 Antibody (C-term) - References

Zhang, F.R., et al. N. Engl. J. Med. 361(27):2609-2618(2009)
Szafranski, K., et al. Genome Biol. 8 (8), R154 (2007) :